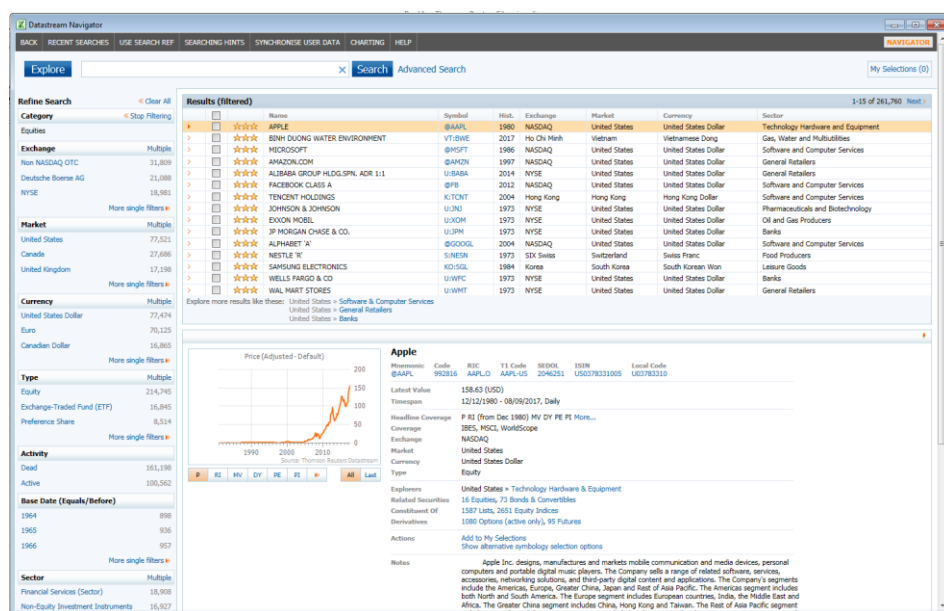


DATASTREAM NAVIGATOR – INCLUDING NEW ADVANCE SEARCH INTERFACE

RELEASE NOTE (VERSION 4.7)

This new release of Datastream Navigator (4.7) due in Quarter 4 sees - the addition of a new Advance Search interface to enable detailed searches on specific fields, the display of more information on the screen, more filters, sorting options and fields, and more series in the Excel export. These enhancements close the remaining differences with the earlier 'Criteria Search' version of Navigator, and significantly extend the many ways to search the rich content available on Datastream. The following are examples of where these new searching facilities can help when searching for series in the different data categories.

Updates to the Navigator interface In addition to the new [Advanced Search](#) link (see next section), the number of results displayed has increased from 10 to 15 series, and the Explore link now stands on its own to encourage use of this hierarchical approach to finding series. There is also a new [Clear All](#) link that will clear all the filters, while the X at the end of the entry box will just clear the text entered (keeping the filters that have been applied such as the category and the market).



New Advance Search option This new facility enables searches to be carried out on specific fields – so in this case the search is for all mnemonics that have CNPER to display a set of personal/private consumption series. The screenshot also shows how the syntax of the request is added in the main text entry box MNEM:and(*cnper*) – where the request can be edited directly with further amendments to the text. This screenshot also illustrated how the Show All option at the top (shows Show Paged after selection) is now available to show all the results if fewer than 1000 matching series.

Date of issue: 25 September 2017

© Thomson Reuters 2017. All Rights Reserved.

Thomson Reuters disclaims any and all liability arising from the use of this document and does not guarantee that any information contained herein is accurate or complete. This document contains information proprietary to Thomson Reuters and may not be reproduced, transmitted, or distributed in whole or in part without the express written permission of Thomson Reuters.



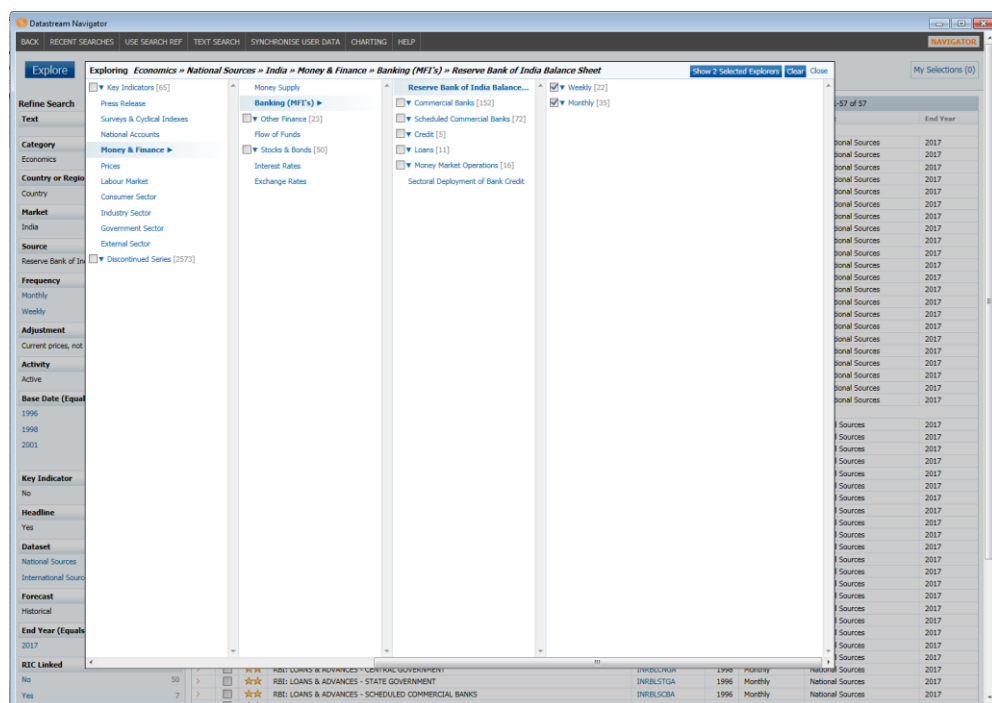
The screenshot shows the Datastream Navigator interface with a search query 'MNM:and("crper")'. The results are filtered to show 1-921 of 921 items. The left sidebar contains filters for Category (Economics), Country or Region (multiple), Market (multiple), Source (multiple), Frequency (multiple), Adjustment (multiple), Activity (multiple), and Base Date (multiple). The main table lists results with columns for Name, Symbol, Hist., Market, Source, and Frequency. The table is sorted by Name. The results include various economic indicators such as PERSONAL CONSUMPTION EXPENDITURES, CONSUMER SPENDING, and PRIVATE CONSUMPTION EXPENDITURE for different countries and regions.

More Filters and Sorting options To facilitate the selection of the market for economic series, these are now split into Countries and Regions to give a much smaller set to select from. Then selecting Active in the Activity filter now displays all series which are still being updated (including ones not recently updated previously filtered out as Dead), and there is a new filter to select only the series mapped to RICs to use in other Eikon apps. In the Preview Pane, the series currency will now always be displayed with the market (the day of the week is also now displayed for weekly Economics series).

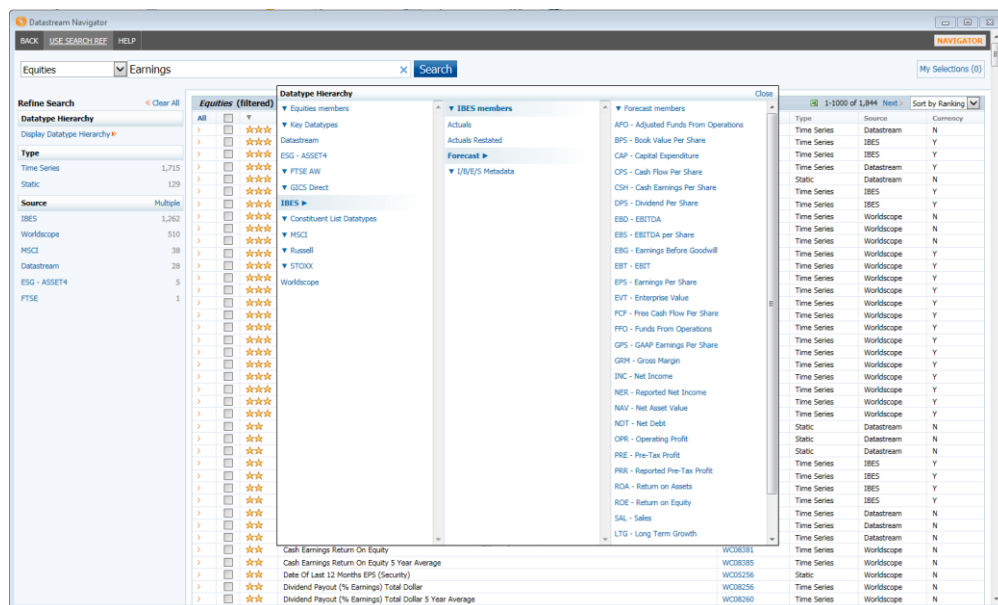
The Sort options - the arrow head after the column headers - now appear when the results are filtered to fewer than 1,000 results, and selecting one of these headings to sort on, will change the display to Show All so all the results are displayed. The set of Sortable columns has also been extended from the Market to include the Name, History and the Source.

The screenshot shows the Datastream Navigator interface with a search query 'MNM:and("crper")'. The results are filtered to show 1-15 of 516 items. The left sidebar contains filters for Category (Economics), Country or Region (multiple), Market (multiple), Source (multiple), Frequency (multiple), Adjustment (multiple), Activity (multiple), and Base Date (multiple). The main table lists results with columns for Name, Symbol, Hist., Market, Source, and Frequency. The table is sorted by Name. The results include various economic indicators such as GDP AT MARKET PRICES, BOP CURRENT ACCOUNT BALANCE, and GROSS EXTERNAL DEBT for different countries and regions. The bottom section shows a detailed view of the 'Brazil, Production Approach, Gross Domestic Product, at Market Prices, Current Prices, BRL' series, including a line chart, key indicators, and a list of related series.

Extensions to series limits When selecting the display of several explorer hierarchies, you can now select to view up to 1,000 (rather than 400) series. The number of series that can be exported to an Excel file to further analyse is now 10,000 (rather than 4,000 series).



Searching for Datatypes The datatypes interface has been updated to highlight the facility to display hierarchies for the datatypes – so for example to see the structure of the IBES consensus estimates content. The Equities datatype category is also the default, when Navigator is displayed from Datastream for Office.



For more details on these changes, please contact the Thomson Reuters helpdesk or your Client Specialist