

Study Internationally!

WU

WIRTSCHAFTS
UNIVERSITÄT
WIEN VIENNA
UNIVERSITY OF
ECONOMICS
AND BUSINESS

Info Session for WU Bachelor Students 2024

WU International Office

MARCH 2024



Agenda

- Why you should consider an international experience!
- Exchange semester
- International Short Programs
- Online courses
- FAQ (stay for coffee and snacks!)

Why you should consider an international experience!

- Cultural curiosity
- Global business savvy
- Adaptability
- Tolerance of ambiguity
- Self-awareness and humility
- Relationship building
- Passion for diversity



Your global mindset

Be open!

- Be open!
- Inform yourself about your options!
- Apply smartly!
- You will not regret it 😊

Be open!

“My semester abroad at KU was the best decision I ever made. The university is great and they really appreciate every single exchange student. [...] If you want to experience real American life and the college spirit, you should definitely do a semester abroad at KU. I don't think there is a better choice than KU! [...] ROCK CHALK JAYHAWK! Once a Jayhawk, always a Jayhawk!”

“That it would not be boring, I knew from day one. [...] it was by far the best semester of my college life, that I could ever have had anywhere.
GOOO HAWKEYES!!!”

Be open!

- Full year exchange at ILLINOIS, UKY, and KU
- Additional scholarship for UKY and KU
- Certificate programs at UKY and KU
- New partner in Africa: Strathmore University (Kenia), ESCA (Morocco)

Exchange semester

WU

WIRTSCHAFTS
UNIVERSITÄT
WIEN VIENNA
UNIVERSITY OF
ECONOMICS
AND BUSINESS



Who can apply for an international exchange?

Enrolled in a bachelor's degree at WU (e.g. BBE, BaWiSo)

36 ECTS credits completed (excluding free electives)

Sometimes requirements of the partner university (e.g. proof of language proficiency after your nomination)

Exchange semester - Application

- Three application periods

(Overseas, Europe,
Additional Period)

- Partner universities worldwide
- Application takes place online
- During an application period,
select up to three preferences
- Learn more on our website

Summer Semester 2024

Application periods for an exchange semester

Application for the summer semester 2025

Overseas	March 12, 2:00pm – March 20, 2024 until 12:00 noon Allocation for an exchange place expected to be announced on: April 18, 2024
Europe	May 7, 2:00pm – May 15, 2024 until 12:00 noon Allocation for an exchange place expected to be announced on: June 6, 2024
Additional application period	June 17, 2:00pm – June 21, 2024 until 12:00 noon Allocation for an exchange place expected to be announced on: July 11, 2024

Exchange Semester - Financial Support

- Every stay abroad can be supported by a grant:
 - **Erasmus+ grant** (EUR 470-520 per month) + **travel costs** (EUR 28 – EUR 535, depending on distance and means of transport)
 - **WU mobility grant** (EUR 200-250 per month + EUR 300-600 travel allowance),
 - **Swiss European Mobility Program (SEMP)**

- Erasmus+ Top Ups:
 - Top Up Individual Support (EUR 250 per month)
 - Inclusion support

- WU mobility grant special support
 - EUR 700 per month, EUR 300-600 travel allowance once

Where can I find information?



wu.ac.at/io/en & websites of partner universities



[Exchange reports](#)



[Credit transfer online database](#)

(updated by Study Regulations & Credit Transfer, Study Service Center)



[Consultation by the IO](#)



[Partner university map](#)



[Info sheets + Fact sheets](#)



[Social Media](#)

We support you!

- If you have **special requirements** due to an impairment, e.g. learning disability, reading or writing difficulties, physical/psychological impairment
 - Please contact BeAble or Student Counselling!

- If you need **special support** in preparing for or during your **stay abroad**
 - Please contact your regional coordinator @ the IO!

Group advisory meetings & workshops

Group advisory meetings and workshops



Click here to participate: [Microsoft Teams channel for group advisory meetings](#)

Services & support (bachelor & master)

[Opening hours](#)

[Dates and deadlines](#)

[Group advisory meetings and workshops](#) ▾

[Workshop offer](#)

[Video library for exchange programs](#)

[Go Global - Your Event to Internationalize Your Studies](#)

[Study Internationally - Info Session](#)



- Perfect for preparing for an application
- For a semester abroad or an International Short Program (ISPs)
- [Advisory meetings](#) for the time before an application
- [Workshop on motivational letters](#): For those who want to approach their application in a structured and creative way
- [Workshop: Make the most of your time abroad](#): To prepare you mentally and emotionally for your time abroad; in cooperation with Student Counselling

Exchange Semester Winter Semester 2023/24

Universidad Adolfo Ibañez - Chile



Exchange Semester Winter Semester 2023/24

University of Sheffield, UK



A photograph of a modern university building with a large glass facade and a curved roof. The building is surrounded by greenery and a clear blue sky. The text 'ILLINOIS' is overlaid in the top left corner.

I ILLINOIS

Gies College of Business

Study Abroad at the University of Illinois
Gies College of Business



University of Illinois

Ranked #15 public university and #47 national university in the U.S.

Over 33,000 Undergraduate students
Over 17,000 Graduate students

1,000+ student clubs + organizations on campus

Located approximately 140 miles south of Chicago

The founders of YouTube, Tesla, and PayPal are Illinois alumni!

Gies College of Business



We are more than business.
We are business on purpose.

2989 Undergraduate students
11 Undergraduate programs

Top 10 public business school in
the nation

8 Undergraduate Majors
3 Minors

Diversity, Equity, & Inclusion is
our top priority

Courses (typically available)

I

Course Catalog

Business Administration:

- The Legal Environment of Business
- Management and Organizational Behavior
- Leading Individuals and Teams
- Strategic Human Resource Management
- Principles of Marketing
- Consumer Behavior
- IT for Networked Organizations
- Data Science and Analytics
- Marketing Analytics
- International Business
- Multinational Management
- Global Business History
- Int'l Mergers and Acquisitions

Accounting:

- ATG Measurement and Disclosure
- Decision Making for ATG

Economics:

- Microeconomics, Macroeconomics
- Economic Statistics I & II
- Environmental Economics

Finance:

- Corporate Finance
- Fundamentals of Real Estate
- Advanced Corporate Finance
- Investment and Portfolio Management
- Options and Futures Markets



Campus Involvement

More than 1000 registered student organizations

[Explore the Champaign-Urbana area!](#)

Unique Illini Union events every week

Watch a performance at the Krannert Center for the Performing Arts

Activities and Recreation center for Sports and Wellness



[Actionable Research](#)

[Campus Sustainability](#)

[Reimagine the Future](#)

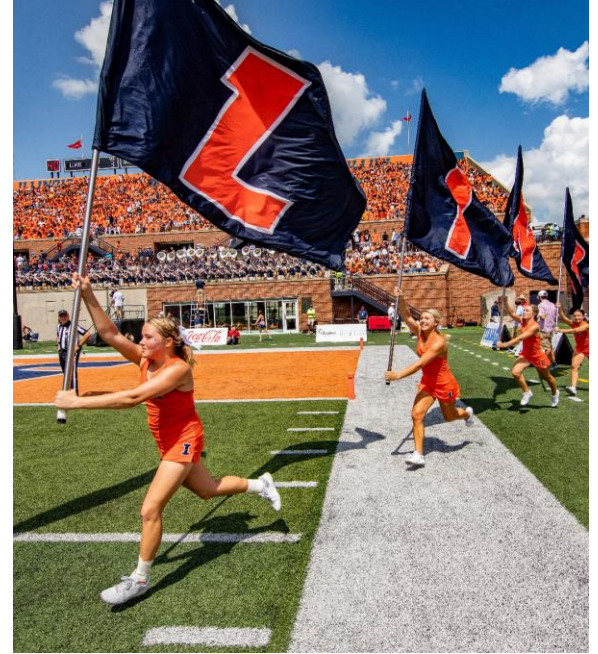
[Greener Campus](#)

[Champaign and Urbana](#)

[Events](#)

Experiential Learning Options
Campus and Community Involvement
Sustainability, Energy, and Environment--iSEE

Student Life in Pictures





Questions?

Email: Alexandra.rosa.Pfefferle@wu.ac.at

IiVP Stammtische:

13. März um 18h (Silberwirt), 17. April (Das Campus), 29. Mai (Zehnermarie)

<https://go.studyabroad.illinois.edu/UIUCProgramGuide>

I ILLINOIS
Gies College of Business

International Short Programs (ISPs)

WU

WIRTSCHAFTS
UNIVERSITÄT
WIEN VIENNA
UNIVERSITY OF
ECONOMICS
AND BUSINESS



International Short Programs (ISPs)

- general information

What are ISPs?

- ISPs are **short-term academic programs** (2-3 weeks) organized by or in cooperation with WU
- ISPs take place **abroad or at WU**
- ISPs help you develop your **intercultural skills**
- ISPs give you the chance to **network with students, lecturers, and businesses** from different countries
- ISPs allow you to **enhance your study progress** by gaining credits during semester breaks
- Some ISPs can also be confirmed for **the IBW international experience** („IBW Auslandserfahrung“ / module in BaWiSo 23)

Who can apply for ISPs? How can I apply?

- Depending on the program, either bachelor's or master's students
- Bachelor's students need to have completed at least 36 ECTS credits
- Application takes place online
- **Application period for ISPs* in summer 2024: March 4 – March 11, 2024**
*applies to most programs

Where can I find further information?

- <https://short.wu.ac.at/isp>
- spwu@wu.ac.at



ISPs offered in (summer) 2024

ISPs abroad

Porto Sustainable Business Summer School
(Portugal)

Bangkok Summer School on International
Business and Sustainable Development
(Thailand)

CUHK International Summer School (Hong
Kong)

SMU Global Summer Programme (Singapore)

Copenhagen Business School (CBS) Summer
University (Denmark)

Ljubljana University Summer School
(Slovenia)

ENGAGE.EU Summer School 2024
Toulouse, France

ISPs at WU

International Summer University^{WU}

Central Europe Connect (Austria,
Slovakia, Poland)

Porto Sustainable Business Summer School 2023



Bangkok Summer School on International Business and Sustainable Development 2023



Online courses

WU

WIRTSCHAFTS
UNIVERSITÄT
WIEN VIENNA
UNIVERSITY OF
ECONOMICS
AND BUSINESS



ENGAGE.EU and ECOL online courses

High-quality
courses with
international
focus

WU students
& domestic
students

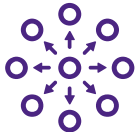
Virtual
mobility at WU
partner
universities



One-of-a-kind learning experience



Make friends and grow your network



Opportunity to broaden your
horizon and develop intercultural
skills



Enhance your study progress and
gain credits next to your normal
workload

- **EUROPEAN UNIVERSITY ALLIANCE**
- **Network of 9 European Universities:** HANKEN School of Management, LUISS University, NHH Norwegian School of Economics, Ramon Llull University, Tilburg University, Université Toulouse 1 Capitole, University of Mannheim, University of National and World Economy
- **Academic program:** wide range of business-related topics; courses on bachelor's and master's level; focus on grand societal challenges
- **Application:** WU students apply directly at the partner university
- **Application requirement:** 60 ECTS credits
- **Credits:** can be transferred towards your curriculum



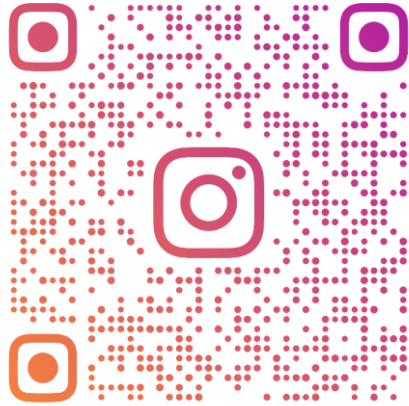
Application period: June; details available on <https://engageuniversity.eu/online-exchange-initiative/>

- **European Common Online Learning Initiative**
- **Collaboration between 7 European Universities:** Aalto University, Bocconi University, Copenhagen Business School, Ramon Llull University – ESADE, Erasmus University Rotterdam - RSM Rotterdam School of Management, and the University of St. Gallen
- **Academic program:** wide range of business-related topics; currently courses on bachelor's level only
- **Application:** WU students apply on our website
- **Credits:** can be transferred towards your curriculum

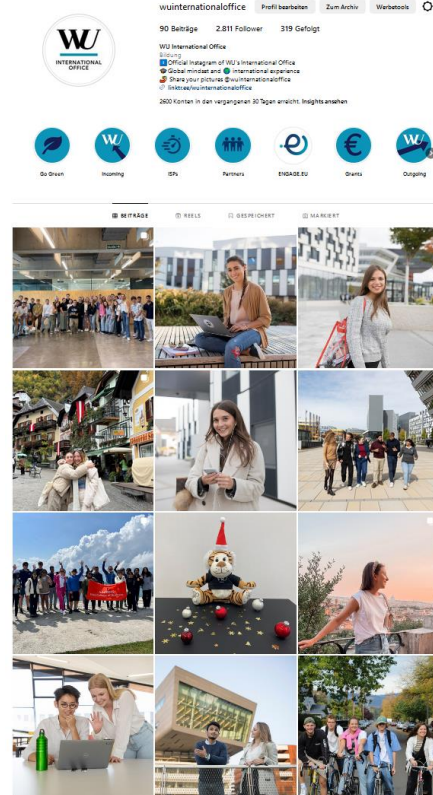


Application period: May 13 - May 19, 2024.; details available on <https://www.wu.ac.at/en/students/study-internationally/internationalization-at-home-bachelor-master/ecol-initiative/>

International Office on Instagram



WUINTERNATIONALOFFICE



 [@wuinternationaloffice](https://www.instagram.com/wuinternationaloffice)

Follow us on
Instagram
#WUInternational

Weekly updates on
international
opportunities!

Stay up-to-date and
learn more about
WU's exchange programs

Contact Information

Who?	For?
Tel: +43-1-31336-4310 E-Mail: wuio@wu.ac.at	General information
Christa Karner Christa.karner@wu.ac.at	Asia (Korea Indonesia Malaysia Singapore Taiwan Thailand Vietnam) Europe (Germany France Greece Italy Portugal Switzerland Spain) Latin America
Kaan Tasli Kaan.tasli@wu.ac.at	Africa Australia & New Zealand Japan North America BBE Double Degree-Programm (QUT)
Victoria Schwabl Victoria.Schwabl@wu.ac.at	Central and Eastern Europe (CEE) Belgium Finland Ireland Scandinavia The Netherlands Turkey UK China Israel Central Europe Connect CEEPUS
Alexandra Pfefferle Alexandra.rosa.Pfefferle@wu.ac.at	University of Illinois, Gies College of Business
Team International Short Programs spwu@wu.ac.at	International Short Programs
ecol@wu.ac.at / engage.io@wu.ac.at	Online courses
Team Program Management Erasmus+, Grants and Staff Mobility wuiogrants@wu.ac.at	Erasmus+ grant, Erasmus+ Top Ups WU mobility grant, WU mobility grant special support