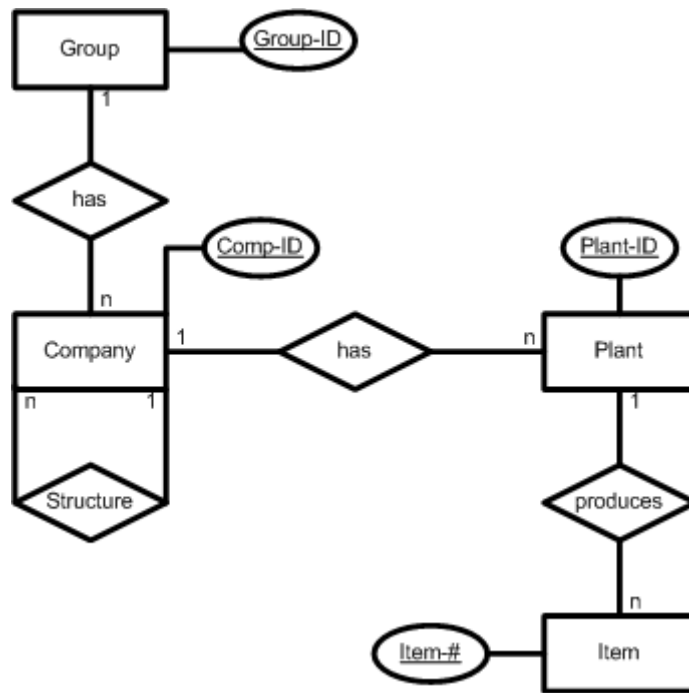


Hierarchical Organisation Structure

Source: [Sche97, p. 47], adapted by Farid El Masri, adjusted by Gerhard Pokorny

Transfer the following verbal description into an ERM:

- a) A group (Group-ID) has several companies (Comp-ID), whereas a company belongs to one group.
- b) Companies are connected by a hierarchical structure; each subsidiary is assigned to exactly one company of the next higher hierarchy level, the parent company.
- c) Each company has several plants (Plant-ID); a plant belongs to one company only.
- d) A plant produces many items (Item-#). An item is only produced in one of the plants.



Group

<u>Group-ID</u>	..

Company

<u>Comp-ID</u>	PComp-ID	Group-ID	..

Plant

<u>Plant-ID</u>	Comp-ID

Item

<u>Item-#</u>	Plant-ID