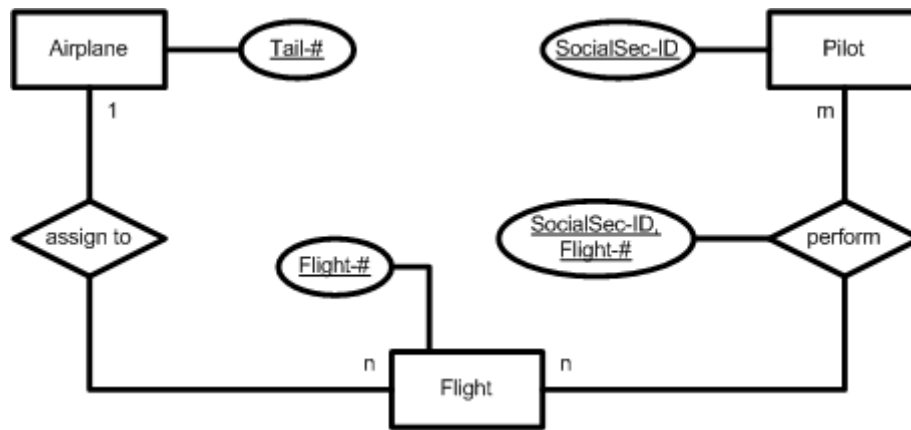


## Simple Flight Database

Source: [Kroe04, p. 92], adapted by Andreas Schlager, adjusted by Gerhard Pokorny

**Transfer the following verbal description into an ERM:**

- a) An airplane (Tail-#) is assigned to several flights (Flight-#). A flight is assigned to only one airplane.
- b) A pilot (SocialSec-ID) can perform several flights. A flight is performed by several (normally at least two) pilots.



Flight

<u>Flight-#</u>	Tail-#	...

Airplane

<u>Tail-#</u>	...

perform

<u>SocialSec-#</u>	<u>Flight-#</u>	...

Pilot

<u>SocialSec-#</u>	...