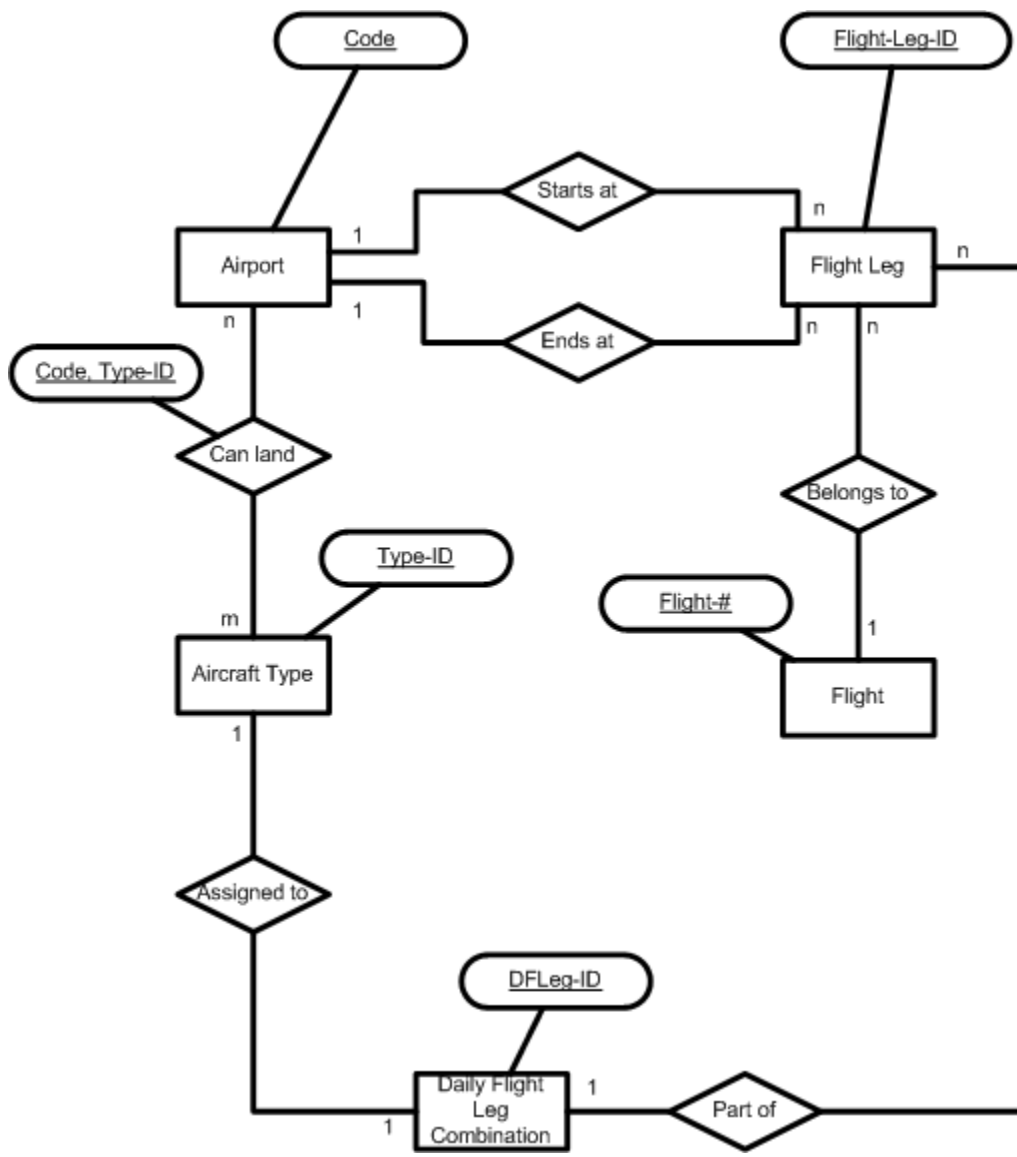


Airport and Flight Database

Source: [BaCN91, p. 343], adapted by Andreas Schlager, adjusted by Gerhard Pokorny

Transfer the following verbal description into an ERM:

- a) A flight (Flight-#) consists of one or more flight legs (Flight-Leg-ID), flight legs belong to one flight. Flight legs start at one airport (Code) and end at another airport.
- b) Flight legs are parts of a daily flight leg combination (DFLeg-ID). A daily flight leg combination is assigned to one aircraft type (Type ID) and an aircraft type is assigned to one daily flight leg combination.
- c) An aircraft type can land at several airports.



Airport

<u>Code</u>	..

Flight

<u>Flight-#</u>	..

Aircraft Type

<u>Type-ID</u>	DFLeg-ID	..

Daily Flight Leg Combination

<u>DFLeg-ID</u>	..

Can land

<u>Code</u>	<u>Type-ID</u>	..

Flight Leg

<u>Flight-Leg-ID</u>	Code1	Code2	Flight-#	DFLeg-ID	..