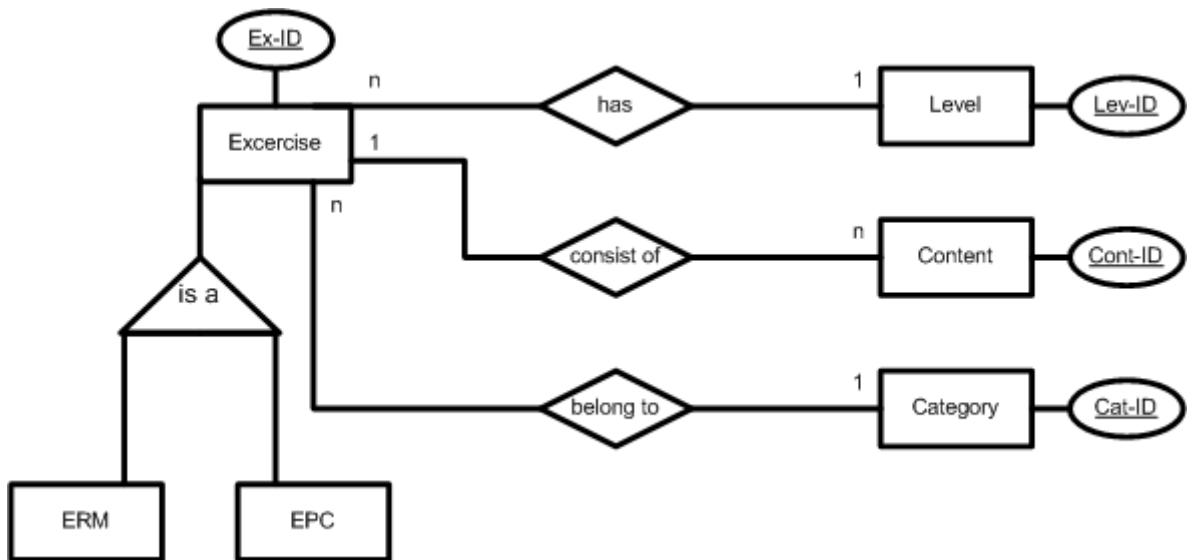


ERM & EPC Webtrainer

Source: Designed by Farid El Masri & Andreas Schlager, adjusted by Gerhard Pokorny

Transfer the following verbal description into an ERM:

- a) The erm & epc webtrainer includes many exercises. The type of an exercise (Ex-ID) is either ERM or EPC. An exercise can only be of one type.
- b) Each exercise has a level (Lev-ID) of difficulty. The same level of difficulty (easy, medium or difficult) can be assigned to more than one exercise.
- c) An exercise consists of several contents (Cont-ID). Each content (e.g. partial question, partial solution,...) belongs to one exercise.
- d) Each exercise belongs to a category (Cat-ID). One category (sales & distribution, master data,...) can be assigned to several exercises.



Exercise

<u>Ex-ID</u>	Cat-ID	Lev-ID	Ex-Type	...

Content

<u>Cont-ID</u>	Ex-ID	...

Level

<u>Level-ID</u>	...

Category

<u>Cat-ID</u>	...