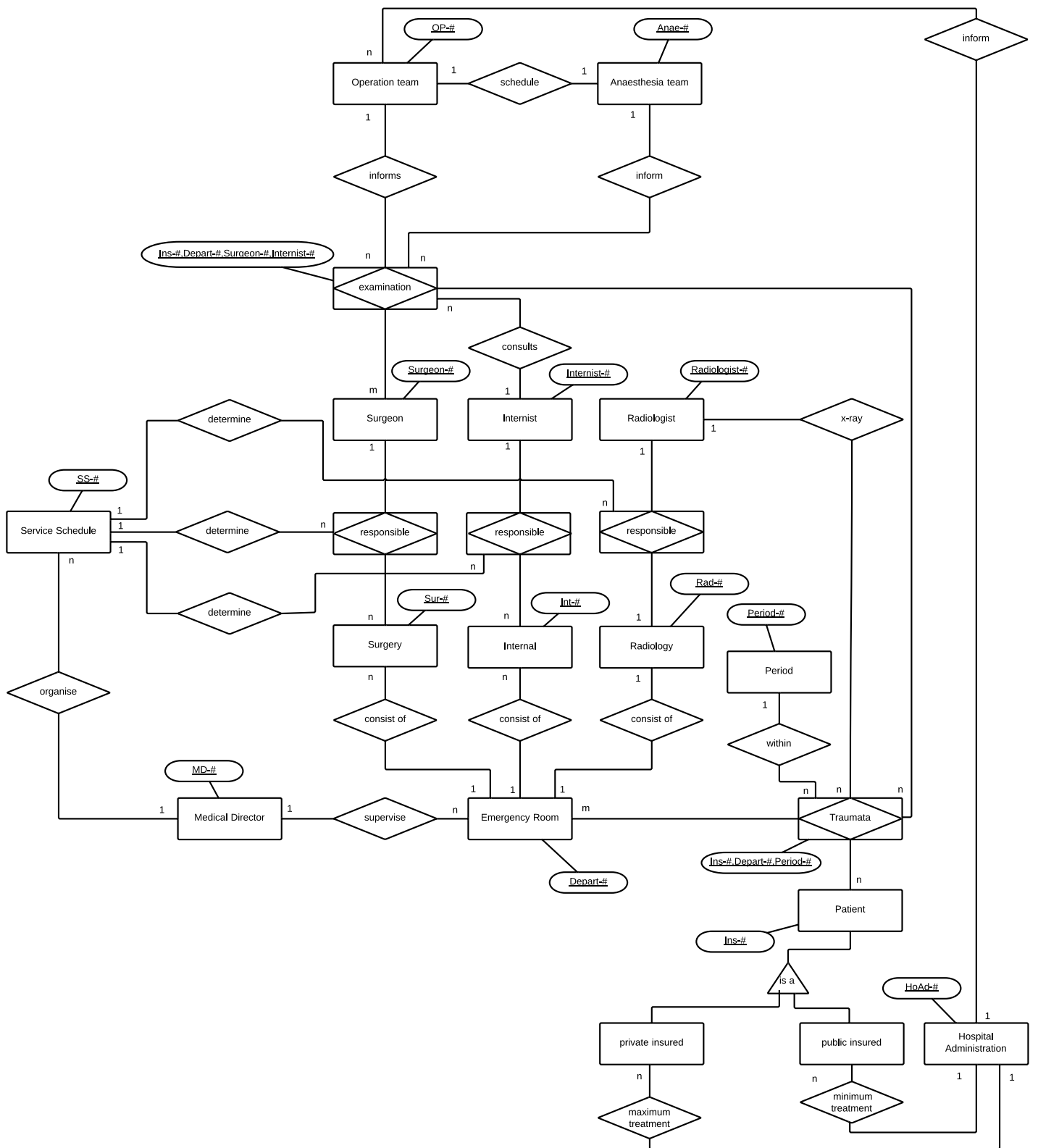


4.2 Fünf neue Very Hard Exercise Modelle

Instructions Very Hard Exercise1: Emergency Room

- a) Patients (Ins-#) access with traumata Emergency Rooms (Depart-#), within a certain Period (Period-#).
- b) An Emergency room can consist of more than one Surgery (Sur-#), more than one Internal (Int-#) but only of one Radiology (Rad-#). All three are uniquely assigned to one Emergency Room.
- c) Surgery has a Surgeon (Surgeon-#), who is responsible for one or more Surgeries. One or more Surgeons can examine one or more traumata of the patients in the emergency room.
- d) Internal has an Internist (Internist-#), who is responsible for one or more Internals. One or more Internists can consult in one or more examinations.
- e) Radiology has a Radiologist (Radiologist-#), who is responsible for the Radiology and x-rays the Traumata. A Radiologist can x-ray more than one Traumata.
- f) Each of the three responsibilities are uniquely determined in the Service Schedule (SS-#). Service Schedules are organised by the only Medical Director (MD-#), who also supervises the Emergency Rooms.
- g) Examinations inform only one Operation team (OP-#) and only one Anaesthesia team (Anae-#).
- h) One Operation team schedules the operation with one Anaesthesia team.
- i) Patients are either privately insured or publicly insured. The relationship between private insured patients and the Hospital Administration (HoAd-#) is maximum treatment. The relationship between public insured patients and the hospital administration is minimum treatment. The Hospital Administration informs one or more Operation teams.



Operations Team

OP-#	...

Anaesthesia Team

Anae-#	...

examinations

Ins-#	Depart-#	Surgeon-#	Internist-#	...

Surgeon

Surgeon-#	...

Internist

Internist-#	...

Radiologist

Radiologist-#	...

Hospital Administration

HoAd-#	...

Surgery

Sur-#	Surgeon-#	...

Internal

Int-#	Internist-#	...

Radiology

Rad-#	Radiologist-#	...

Service Schedule

SS-#	MD-#	...

Period

Period-#	...

Traumata

Ins-#	Depart-#	Period-#	...

Medical Director

MD-#	...

Emergency Room

Depart-#	MD-#	...

Patient

Ins-#	...