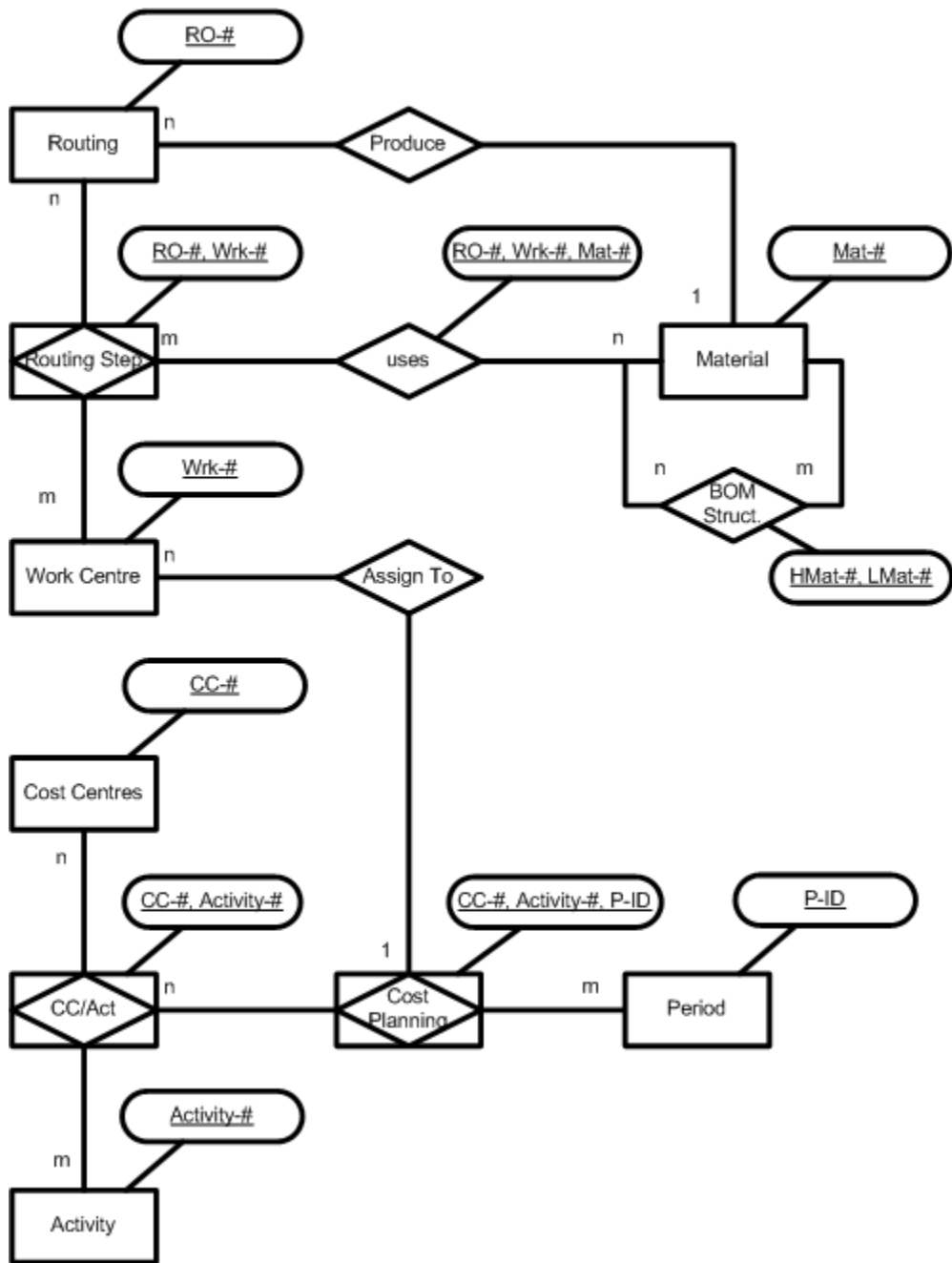


PPC System

Source: [Hohe99], adapted by Farid El Masri, adjusted by Gerhard Pokorny

Transfer the following verbal description into an ERM:

- a) The materials (Mat-#) are connected by hierarchical bill of materials structure.
- b) On a technical level work centres (Wrk-#) are used in routings (RO-#) as a routing step. Materials are produced by routings, whereas, a routing is uniquely assigned to the material it produces; each routing step refers to the materials that are used.
- c) Cost planning is defined as a combination of cost centres (CC-#), activities (Activity-#) and periods (P-ID).
- d) Each work centre is uniquely assigned to the combination cost planning.



Material

Mat-#	..

Routing

RO-#	Mat-#	..

BOM Structure

HMat-#	LMat-#	..

uses

RO-#	Wrk-#	Mat-#	..

Routing-Step

RO-#	Wrk-#	..

Work Centre

Wrk-#	CC-#	Activity-#	P-ID	..

Cost Planning

CC-#	Activity-#	P-ID	..

Cost Center/Activity

CC-#	Activity-#	..

Cost Centre

CC-#	..

Activity

Activity-#	..

Period

P-ID	..