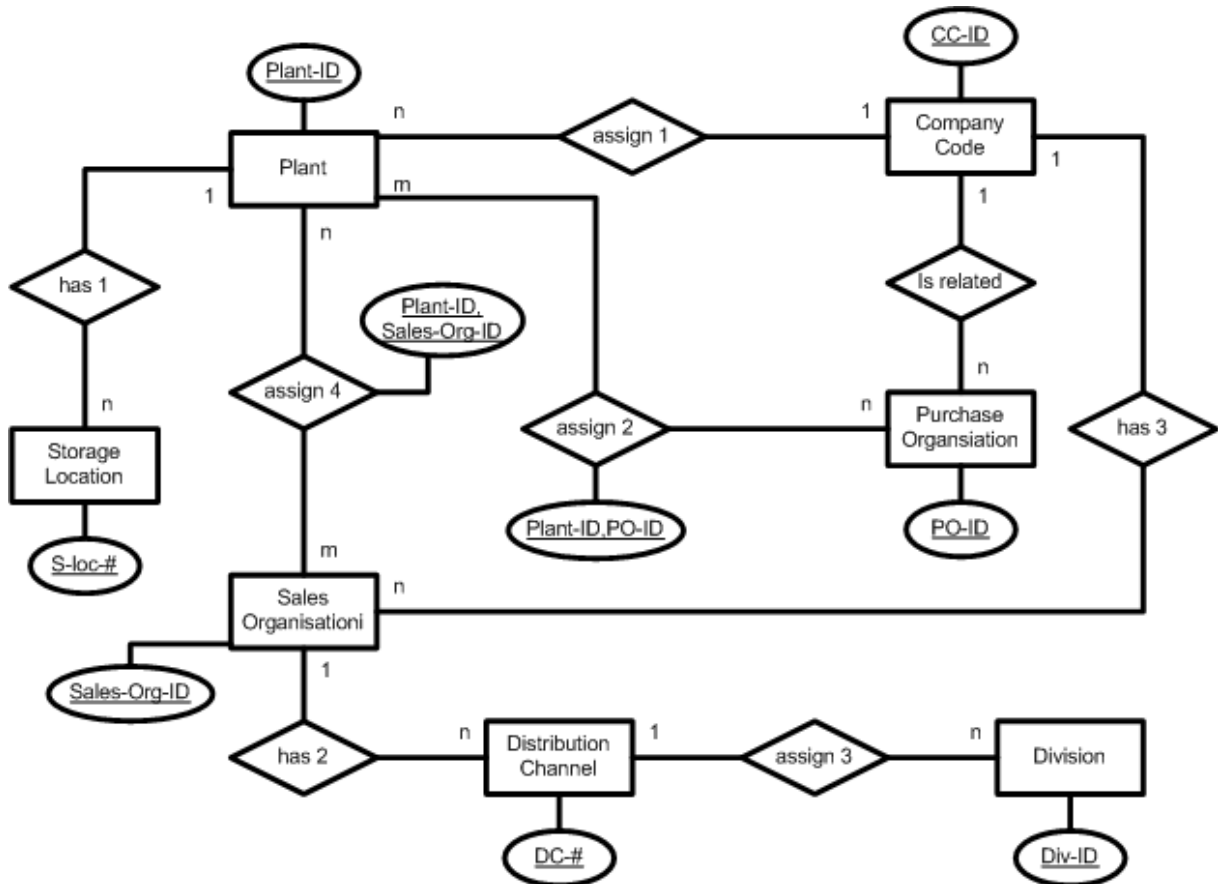


Organisation

Source: [PrTW01, p. 35], adapted by Farid El Masri, adjusted by Gerhard Pokorny

Transfer the following verbal description into an ERM:

- a) A company has one or more locations referred to as "Plants" (Plant-ID). Several plants are uniquely assigned to the same company code (CC-ID).
- b) Plants can have several storage locations (S-loc-#) in which the manufactured and purchased items are stocked, a storage location however, can only be assigned to one plant.
- c) A purchase organisation (PO-ID) can be assigned to several plants and a plant to several purchase organisations. A company code is related to one or more purchase organisations, the latter is uniquely related to a company code.
- d) A distribution channel (DC-#) can be assigned to several divisions (Div-ID), whereas a division is uniquely assigned to a distribution channel.
- e) A sales organisation (Sales-Org-ID) can have several distribution channels, whereas a distribution channel is uniquely assigned to a sales organisation.
- f) A company code can have several sales organizations. Sales organisations are assigned to one company code only and to several plants. Plants can also be assigned to several sales organisations.



Storage Location

<u>S-Loc-#</u>	Plant-ID	..

Plant

<u>Plant-ID</u>	CC-ID	..

Assign 2

<u>Plant-ID</u>	<u>PO-ID</u>	..

Purchase Organisation

<u>PO-ID</u>	CC-ID	..

Company Code

<u>CC-ID</u>	..

Sales Organisation

<u>Sales-Org-ID</u>	CC-ID	..

Assign 4

<u>Plant-ID</u>	<u>Sales-Org-ID</u>	..

Distribution Channel

<u>DC-#</u>	<u>Sales-Org-ID</u>	..

Division

<u>Div-ID</u>	<u>DC-#</u>	..