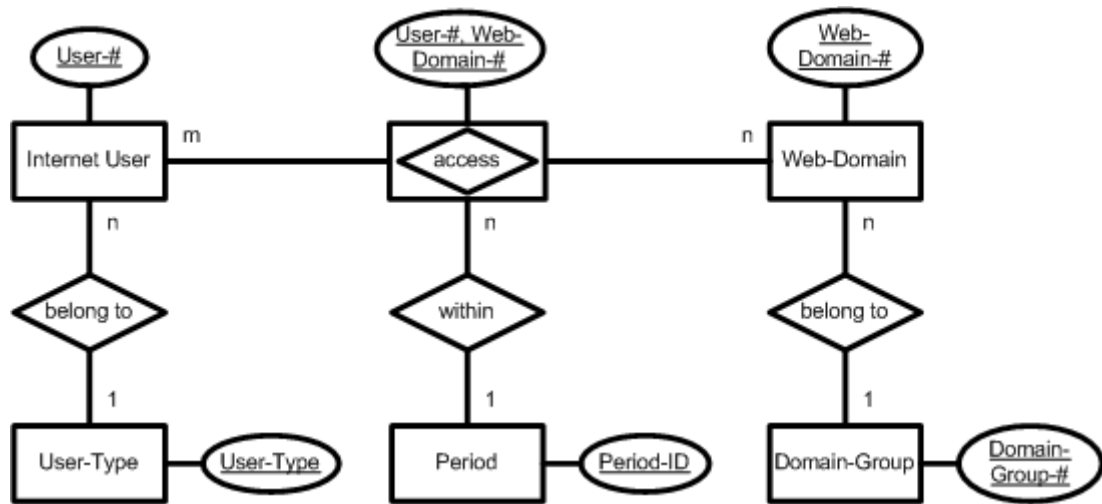


Accessing a Web-Domain

Source: [PrOs01, p. 52], adapted by Farid El Masri, adjusted by Gerhard Pokorny

Transfer the following verbal description into an ERM:

- a) Internet users (User-#) access a web-domain (Web-Domain-#), within a certain period (Period-ID).
- b) Each internet user belongs to a user type (User-Type) and each web domain to a domain group (Domain-Group-#).



Internet User

<u>User-#</u>	User-Type	...

User Type

<u>User-Type</u>	...

access

<u>User-#</u>	<u>Web-Domain-#</u>	Period-ID	...

Period

<u>Period-ID</u>	...

Web-Domain

<u>Web-Doman-#</u>	Domain-Group-#	...

Domain Group

<u>Domain-Group-#</u>	...