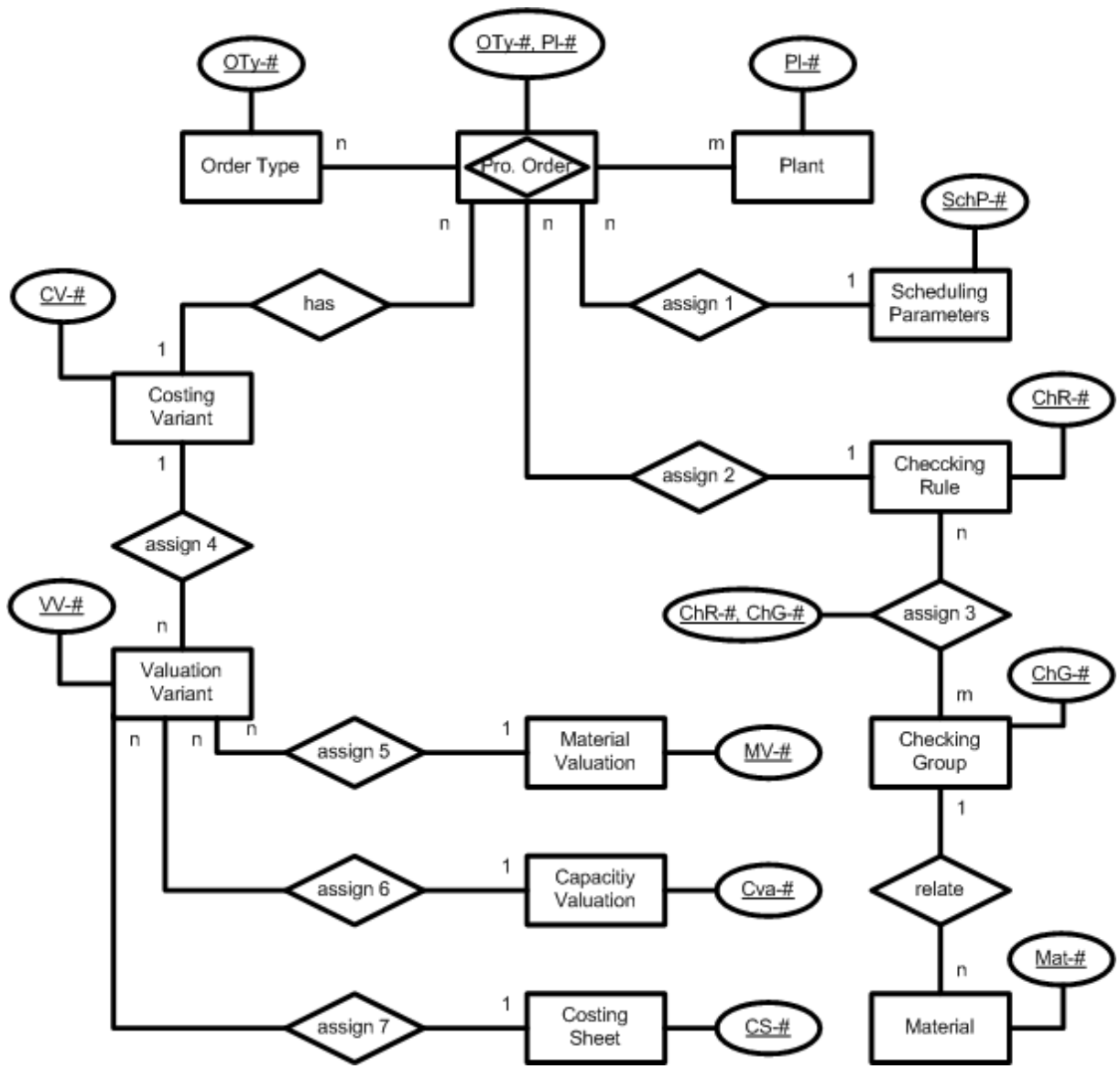


Customizing a Production Order

Source: [PrTW01, p. 50-60; based on a lecture by Prof. Prosser], adapted by Farid El Masri, adjusted by Gerhard Pokorny

Transfer the following verbal description into an ERM:

- a) On creation of a production order the combination of order type (OTy-#) and plant (Pl-#) needs to be determined. There are several order types and plants, whereby each order type can be assigned to any plant.
- b) For material availability checks for production, each checking rule can be assigned to several checking groups (ChG-#) and each checking group (e.g. "Daily Requirements") can be assigned to several checking rules.
- c) Materials (Mat-#) are related to checking groups, whereby each material is associated with one checking group only. The latter can be assigned to several materials.
- d) Unique scheduling parameters (SchP-#) are assigned to the plant/order type combination. However, different combinations can use the same scheduling parameters.
- e) The pre-costing of production orders is done using costing variants (CV-#). Each plant/order type combination has only one costing variant.
- f) A valuation variant (VV-#) determines how direct costs and OH surcharges are evaluated. It is linked to only one costing variant, whereby the costing variant can be assigned to one or more valuation variants.
- g) A valuation variant is uniquely assigned to a material valuation (MV-#) and a capacity valuation (Cva-#). These evaluations may be used in several valuation variants.
- h) A valuation variant is uniquely assigned to a costing sheet (CS-#)



Order Type

<u>OTy-#</u>	...

Plant

<u>Pl-#</u>	...

Pro. Order

<u>OTy-#</u>	<u>Pl-#</u>	<u>CV-#</u>	<u>ChR-#</u>	<u>SchP-#</u>	...

Material

<u>Mat-#</u>	<u>ChG-#</u>	...

Scheduling Parameter

<u>SchP-#</u>	...

Checking Group

<u>ChG-#</u>	...

assign 3

<u>ChR-#</u>	<u>ChG-#</u>	...

Checking Rule

<u>ChR-#</u>	...

Costing Variant

<u>CV-#</u>	...

Valuation Variant

<u>VV-#</u>	<u>CV-#</u>	<u>MV-#</u>	<u>Cva-#</u>	<u>CS-#</u>	...

Material Valuation

<u>MV-#</u>	...

Capacity Valuation

<u>Cva-#</u>	...

Costing Sheet

<u>CS-#</u>	...