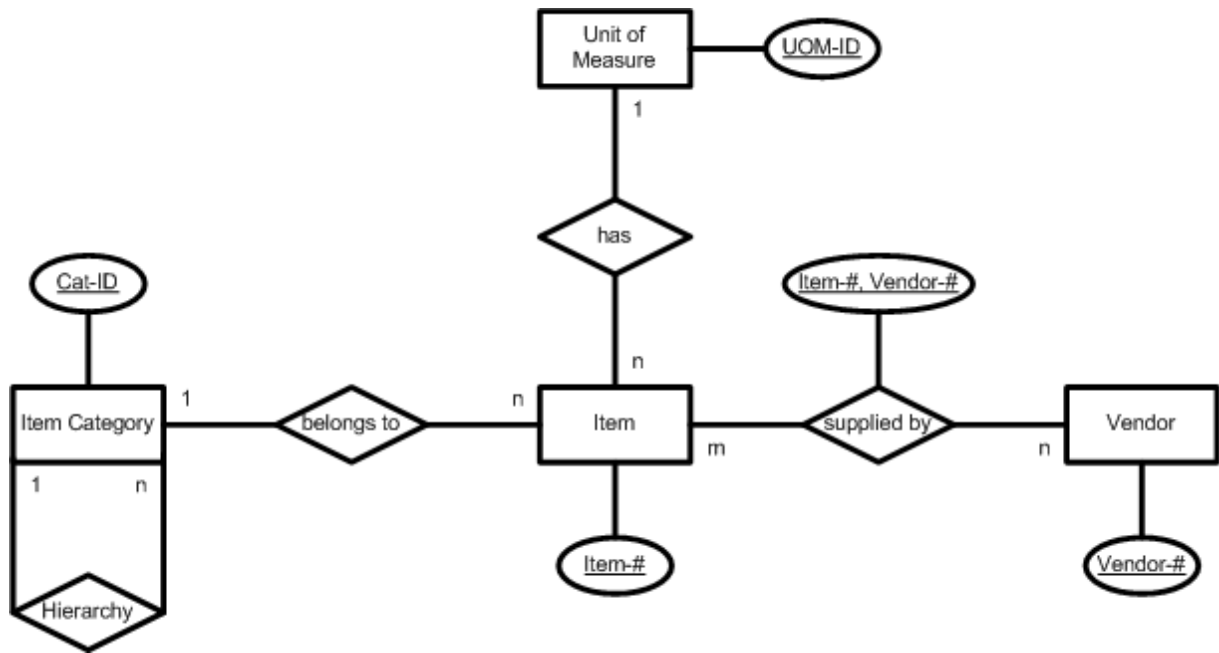


Material and Supplier

Source: [Leite03, p. 94], adapted by Farid El Masri, adjusted by Gerhard Pokorny

Transfer the following verbal description into an ERM:

- a) Items (Item-#) belong to a category (Cat-ID). An (Item) category can be assigned to only one item. There is a hierarchical classification system of item categories. Each item category is assigned exactly to one category hierarchy.
- b) Items have a unit of measure (UOM-ID). An item is uniquely assigned to a UOM.
- c) A specific item is supplied by more than one vendor (Vendor-#) only. Vendors supply several items.



Item Category

<u>Cat-ID</u>	Cat-Hierarchy	...

Unit of Measure

<u>UOM-ID</u>	...

Item

<u>Item-#</u>	Cat-ID	UOM-ID	...

supplied by

<u>Item-#</u>	<u>Vendor-#</u>	...

Vendor

<u>Vendor-#</u>	...