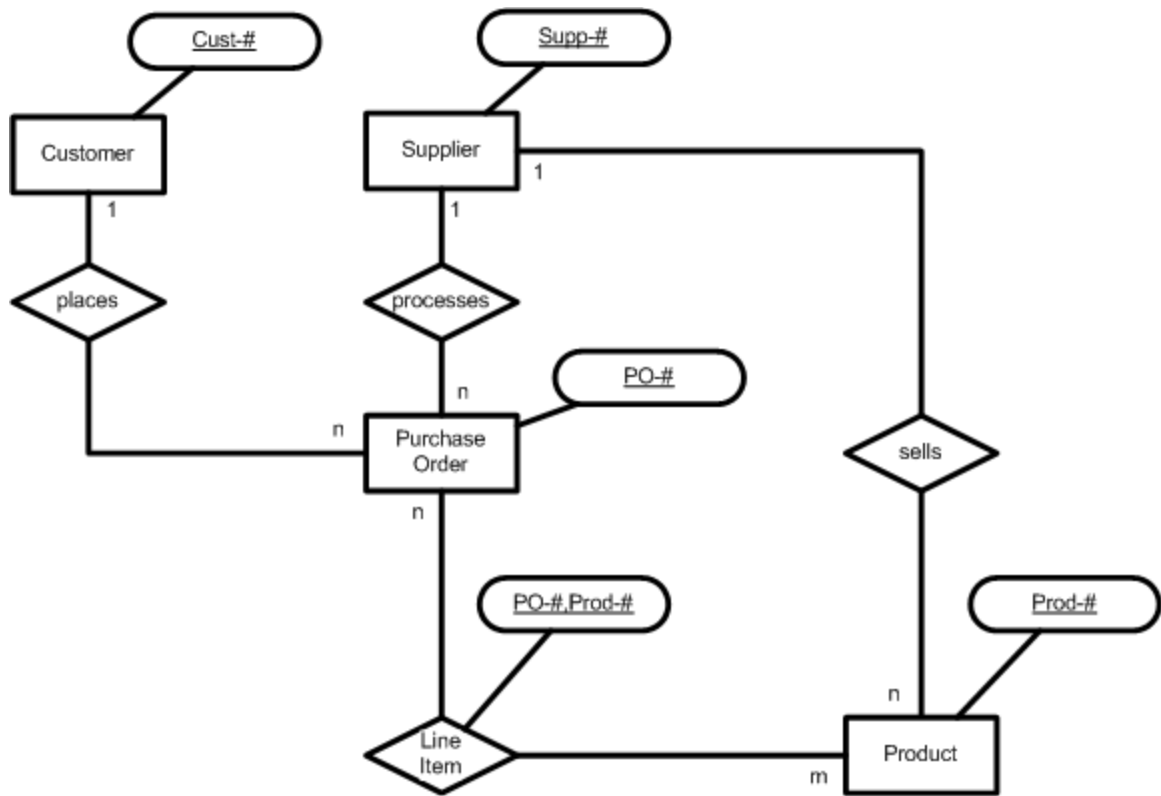


Web Shop

Source: [Mit197], adapted by Farid El Masri, adjusted by Gerhard Pokorny

Transfer the following verbal description into an ERM:

- a) A supplier (Supp-#) processes many purchase orders (PO-#) and sells a number of products (Prod-#). A product is sold by only one supplier.
- b) Each of the purchase orders that a supplier may process includes several products. The relationship between order and product is defined as "Line Item".
- c) A customer (Cust-#) may place one or more purchase orders. A purchase order may be placed by only one customer.



Supplier

<u>Supp-#</u>	..

Purchase Order

<u>PO-#</u>	Supp-#	Cust-#	..

Line Item

<u>PO-#</u>	<u>Prod-#</u>	..

Product

<u>Prod-#</u>	Supp-#	..

Customer

<u>Cust-#</u>	..