



WIRTSCHAFTS
UNIVERSITÄT
WIEN VIENNA
UNIVERSITY OF
ECONOMICS
AND BUSINESS



Integration Management with SAP S/4Hana

Alexander Prosser

Domenica Bagnato

Content schedule

- Sales process "test flight"
- Cost accounting
- Materials, materials management => BOM
- Work centres
- Routings
- Sales and operations plan => Independent demand
- MRP run

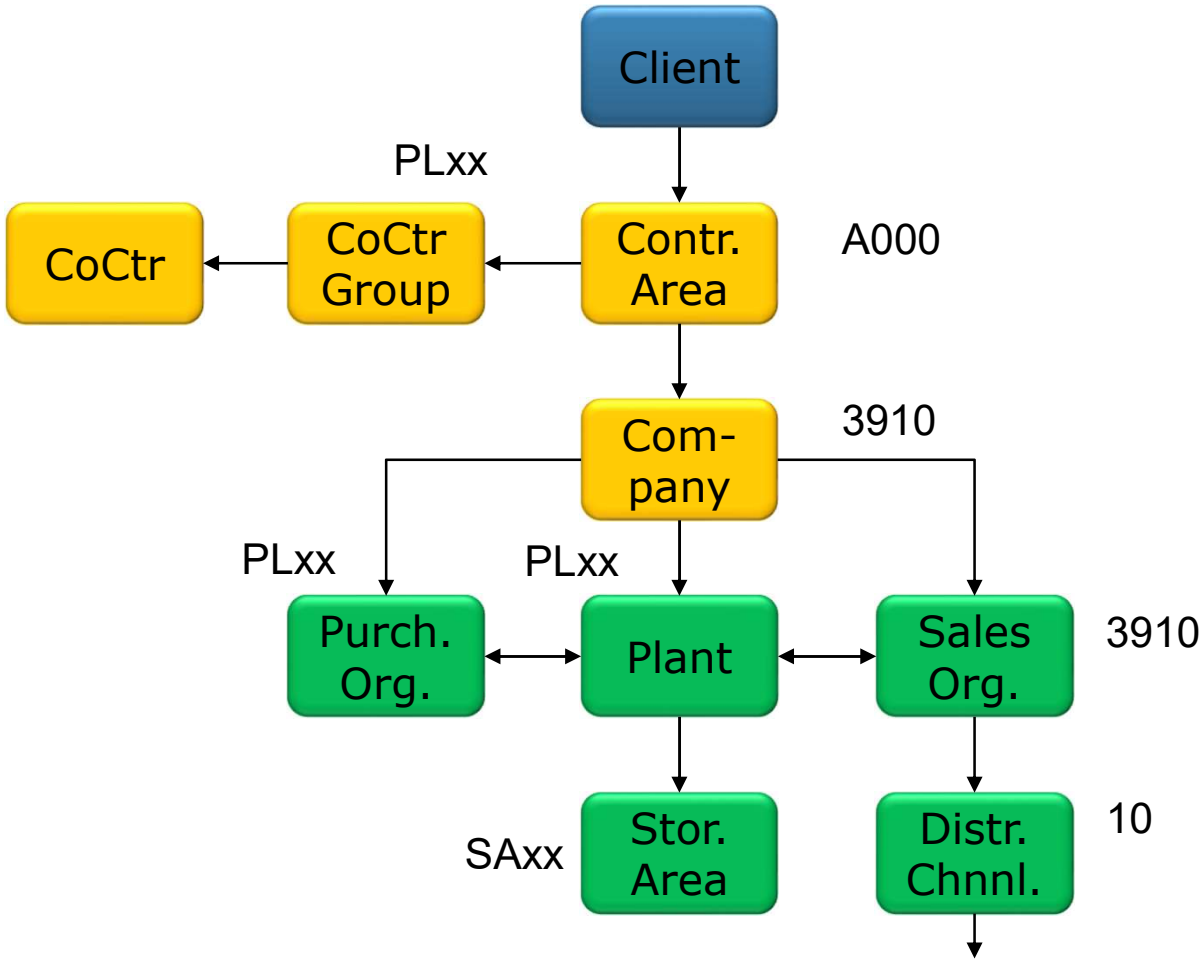
Purchase requisitions

Vendor master data
Info records
Vendor assignment
Purchase order
Goods receipt

Planned production order

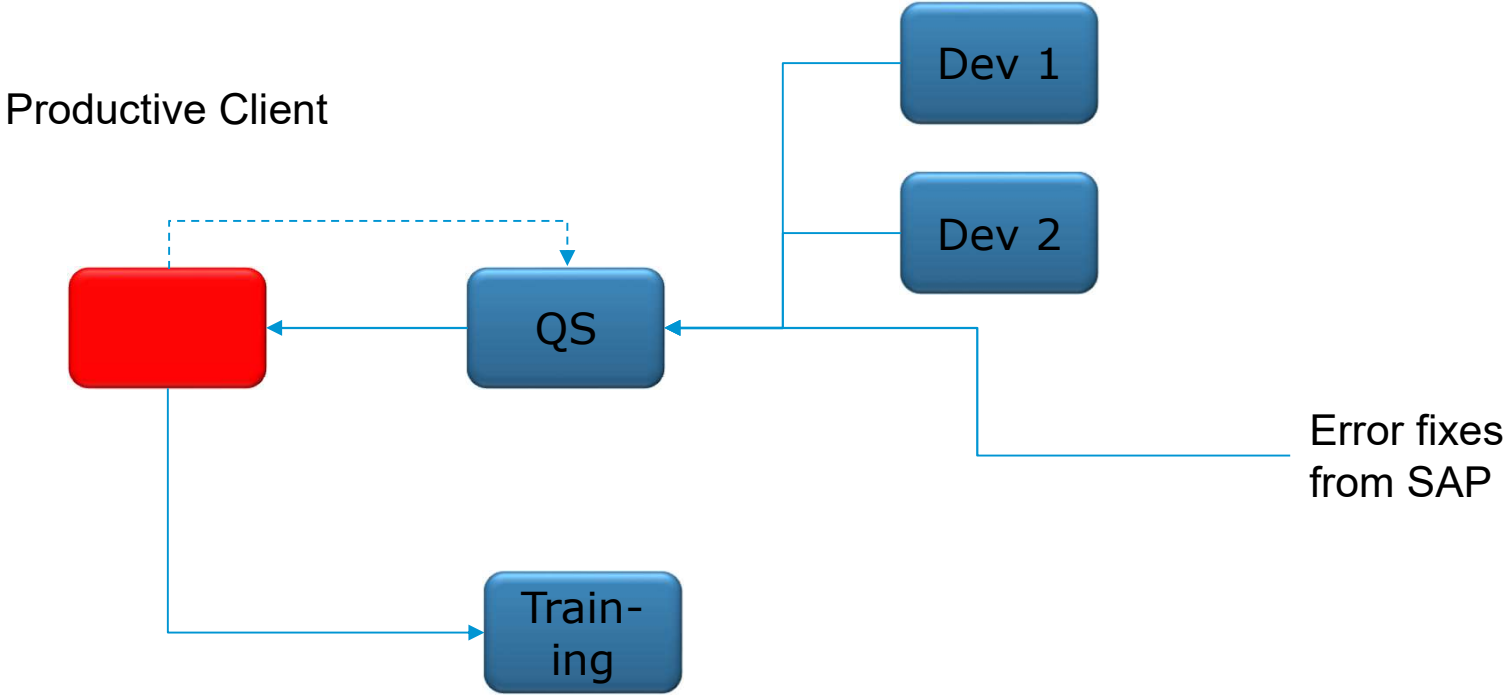
Create order
Check order
Release order
Goods issue
Confirmation
Goods receipt
Order closure

Organisational Structure

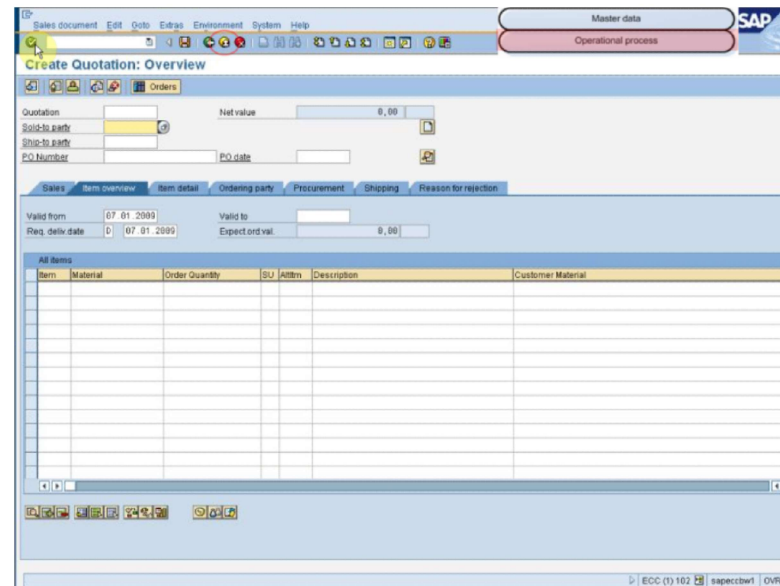


Division, sales office, sales group ...

Organisational Structure

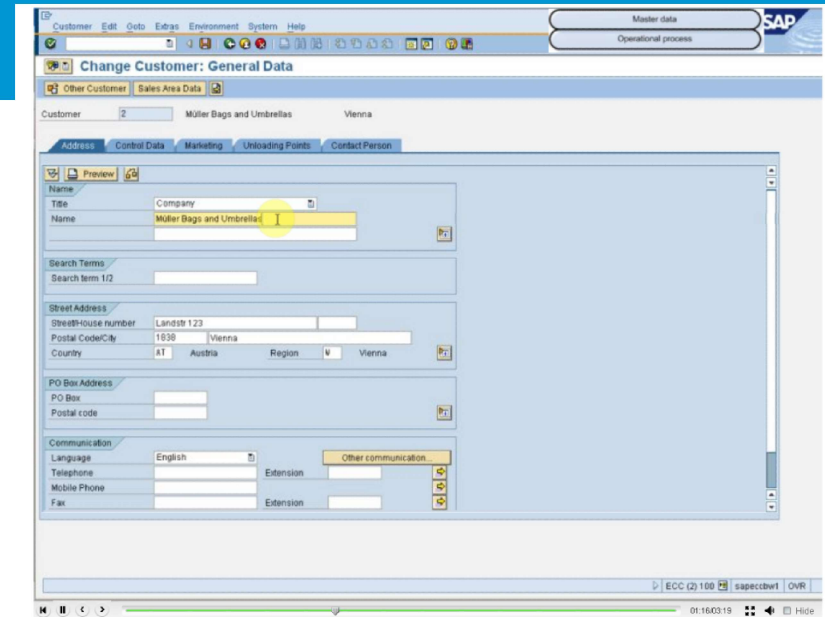


Overview



Operational process

Overview



Master data

Operational process

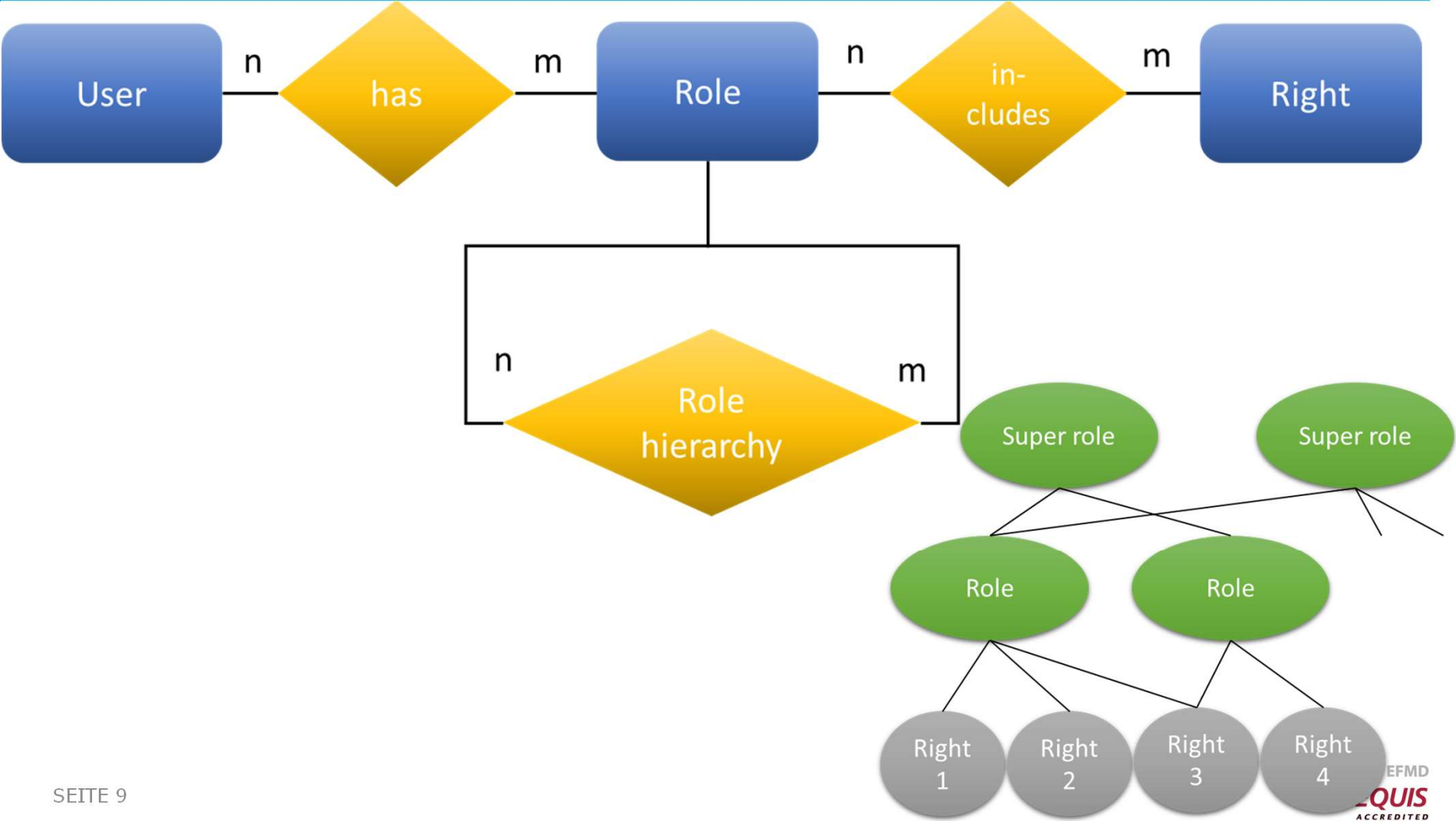
State-of-the-art Access Management



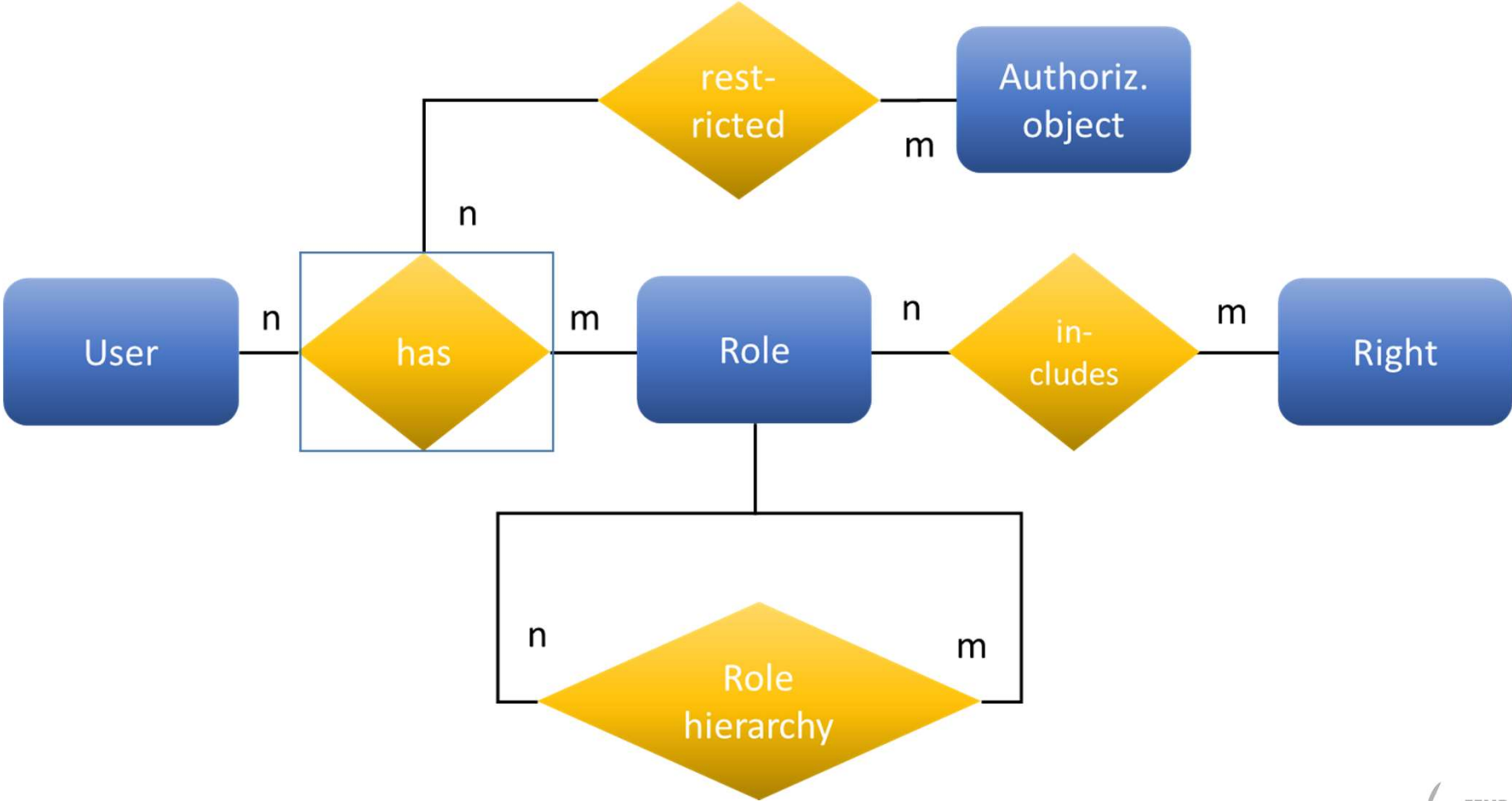
State-of-the-art Access Management



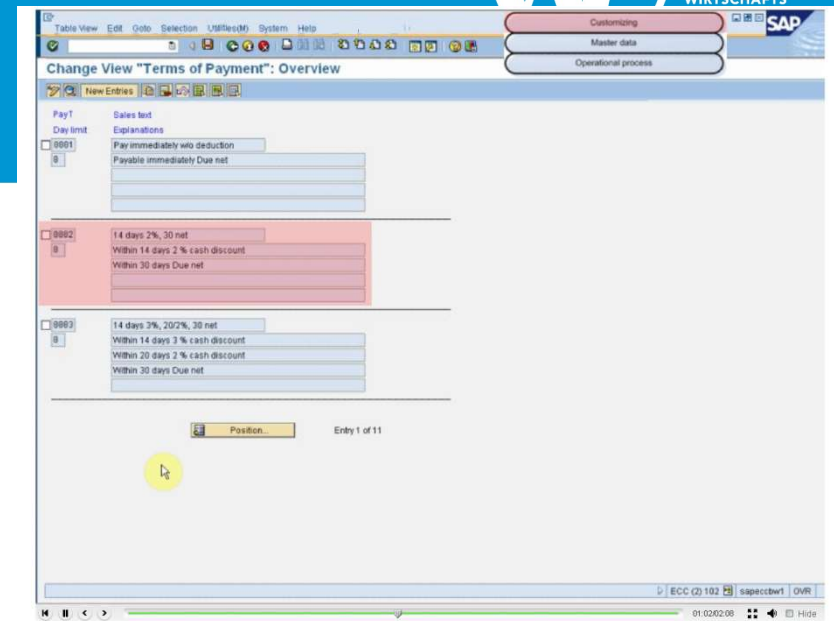
State-of-the-art Access Management



State-of-the-art Access Management



Overview



Customizing

Master data

Operational process

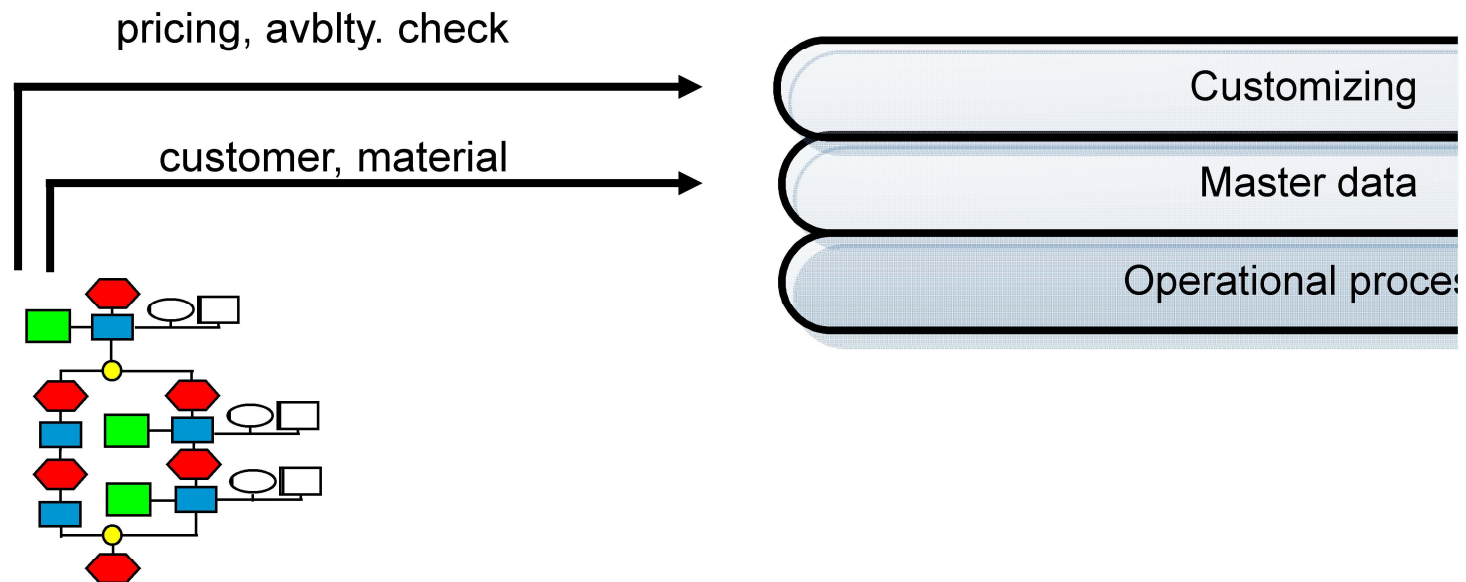
Overview

Planning

Implementation

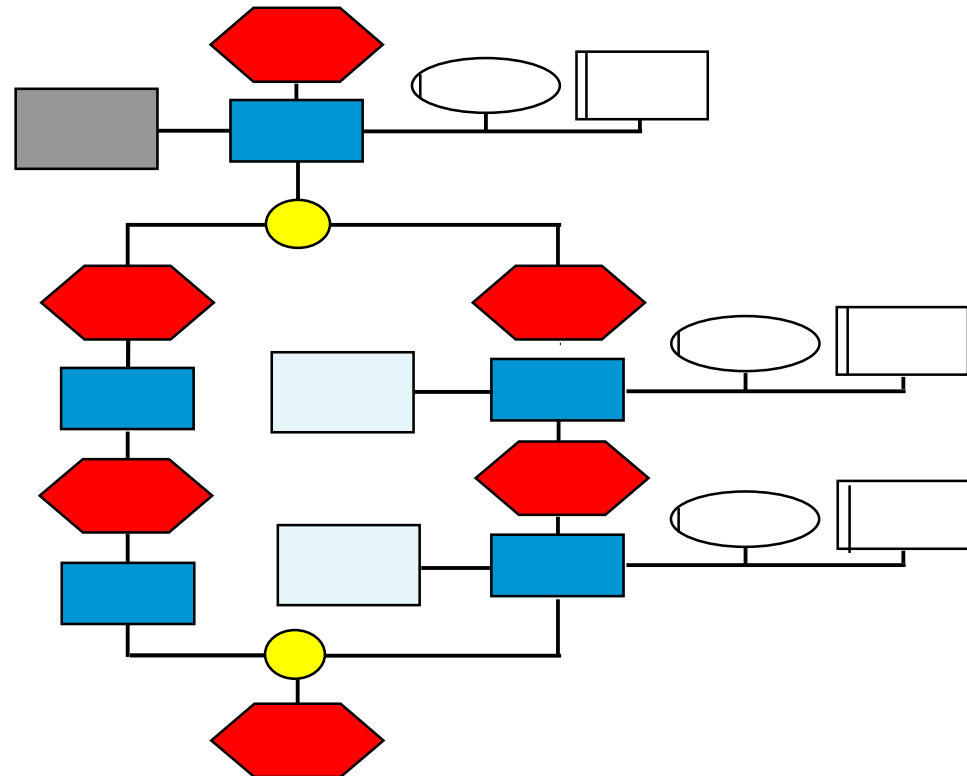


Overview

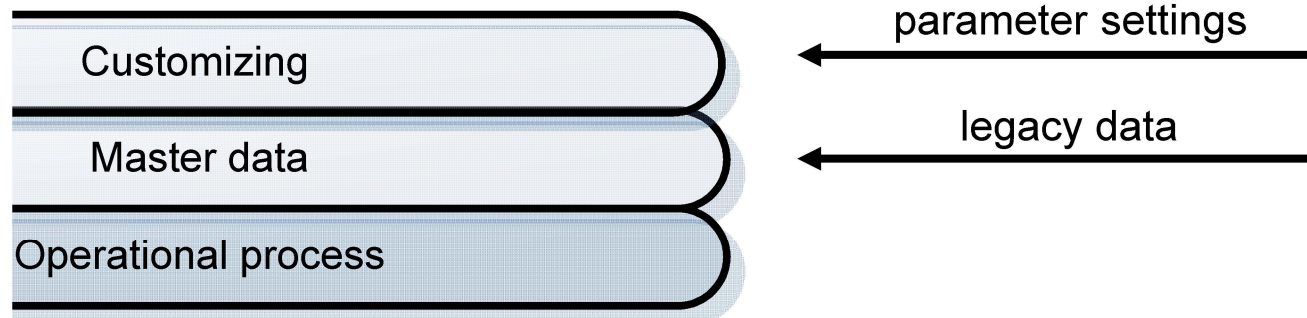


ECC Supporting the Implementation

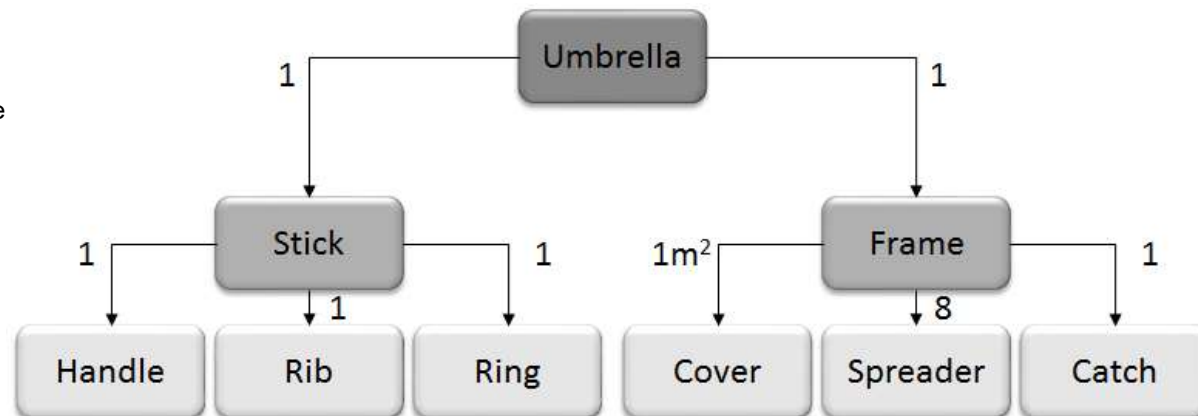
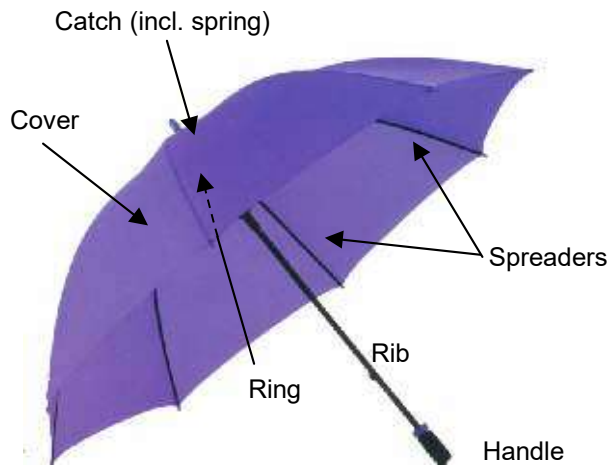
- Master and operational data req. derived from chain
- According to implem. plan: do we have all data necessary along the chain?
- Plan for customizing and data transfer from legacy systems



Overview



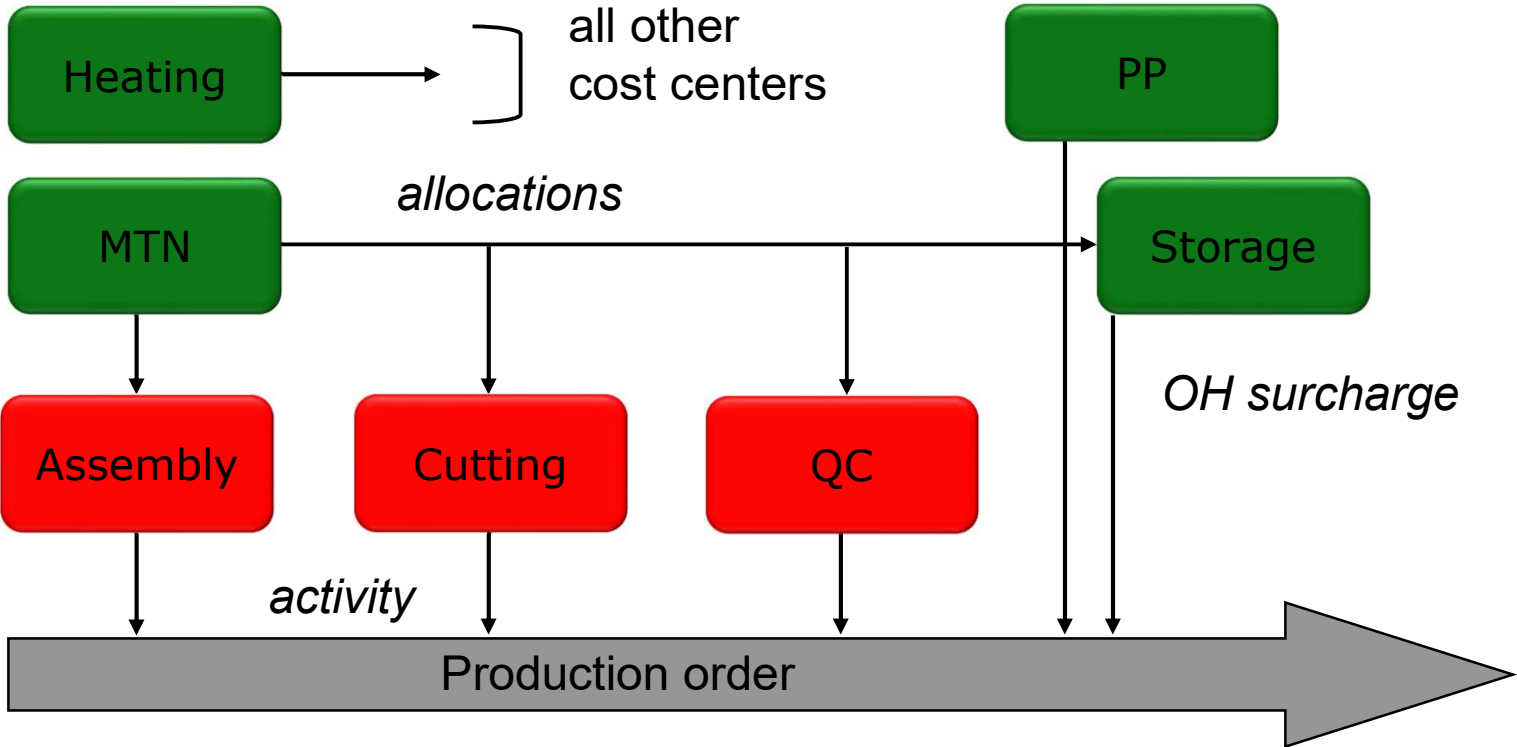
The Case Study



The Case Study

ROUTING STICK			
WORK CENTER	SET-UP TIME	PROCESSING TIME	MATERIAL
wuxx-asby (Assembly)	15 min	10 s	Handle, rib, ring
wuxx-qa (Quality Assurance)	-	10 s	-
ROUTING FRAME			
WORK CENTER	SET-UP TIME	PROCESSING TIME	MATERIAL
wuxx-cut (Cutting)	10 min	10 s	Cover
wuxx-asby	10 min	20 s	Spreaders, catch
wuxx-qa	-	10 s	-
ROUTING UMBRELLA			
WORK CENTER	SET-UP TIME	PROCESSING TIME	MATERIAL
wuxx-asby	10 min	10 s	Stick, frame
wuxx-qa	-	10 s	-

Cost Accounting



Primary cost planning

Wages and salaries:	Fixed EUR	Variable EUR	Total EUR
Assembly	48,000	12,000	60,000
Cutting	28,000	7,000	35,000
Q-Check	25,600	6,400	32,000
Heating			
Maintenance	32,000		32,000
Production planning	60,000		60,000
Storage	65,000		65,000
Social Security:	Fixed EUR	Variable EUR	Total EUR
Assembly	14,400	3,600	18,000
Cutting	8,400	2,100	10,500
Q-Check	7,700	1,900	9,600
Heating			
Maintenance	9,600		9,600
Production planning	18,000		18,000
Storage	19,500		19,500

Primary cost planning

Depreciation:	Original investment	Useful life	Annual depr. EUR
Assembly machine	200,000	n/a	n/a
Assembly tools	24,000	6	4,000
Cutting machine	45,000	n/a	n/a
Maintenance tools	7,000	10	700
	4,000	5	800
Prod. planning system	25,000	5	5,000
Storage building	180,000	25	7,200
Storage system	120,000	15	8,000
PC with control software	20,000	5	4,000

Useful life: Assembly 20,000 hrs, Cutting 22,500 hrs

Assembly and cutting 90% variable

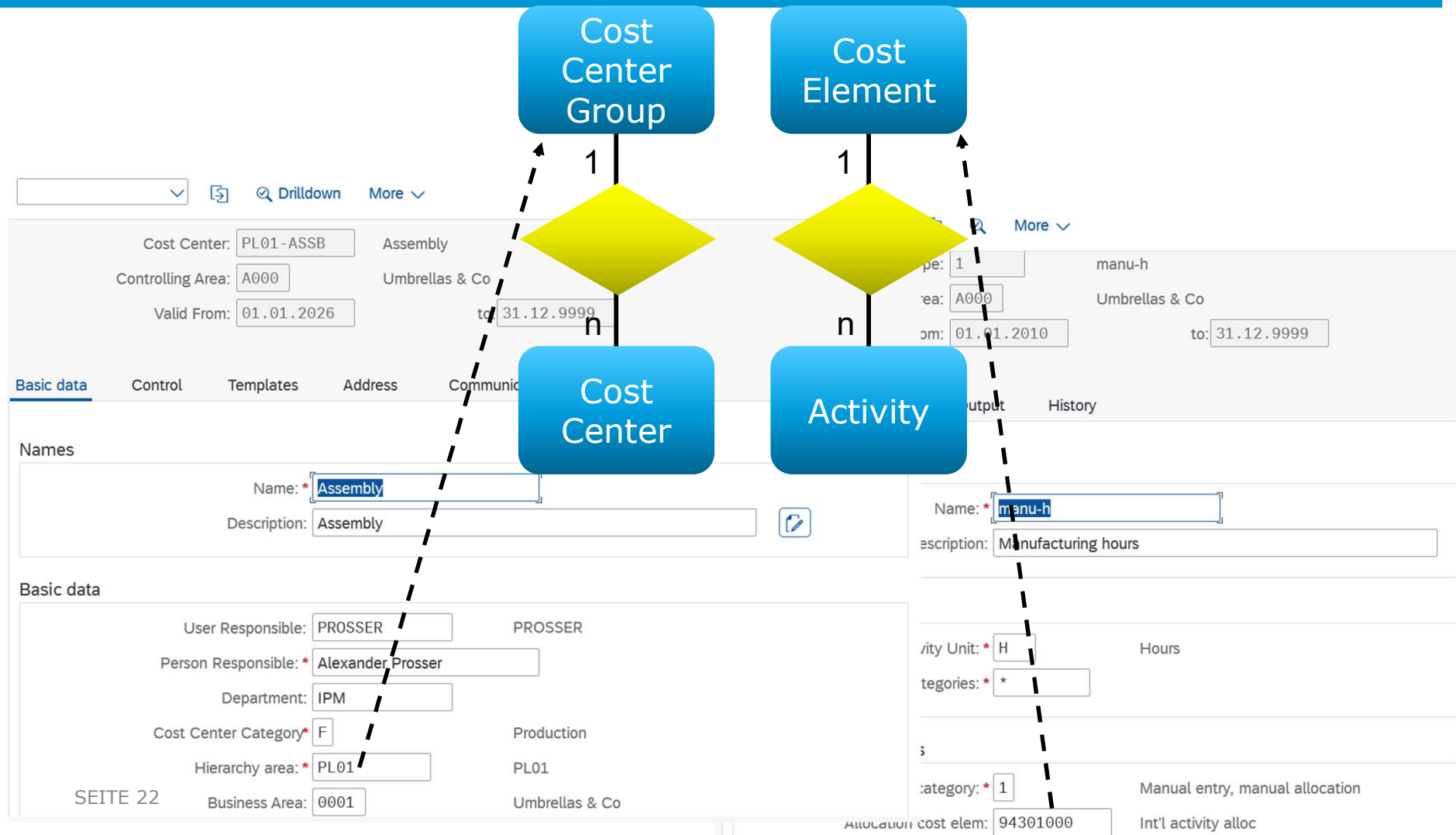
Primary cost planning

Other costs:	Total cost EUR	Comment
Assembly: Minor assets Electricity	700 2,500	Can be depreciated immediately
Cutting: Minor assets Electricity	1,200 1,900	
Q-Check: Training Electricity	2,000 500	
Heating: Heating costs	5,000	Long distance provider, no assets
Maintenance: Electricity Training	1,200 1,000	
Production Planning: Electricity Software upgrade Training	450 400 5,000	
Storage: Electricity Repairs	2,600 9,000	Can be deducted, no activation

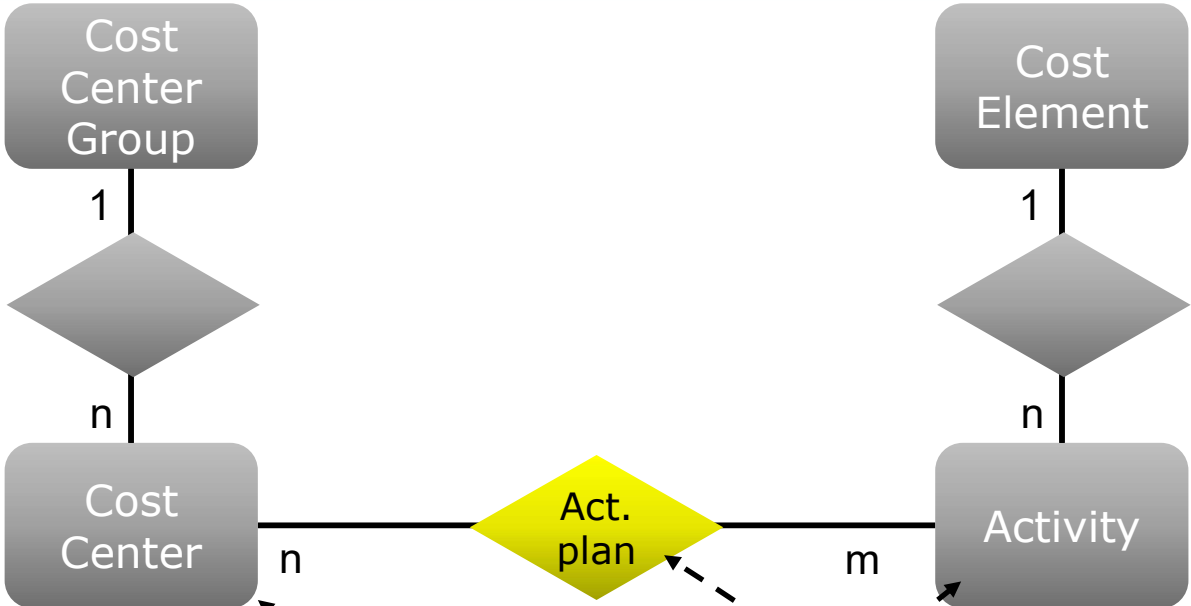
In direct cost centers:

Minor assets 50% variable
Electricity fully variable
Training fully fixed

Cost Accounting



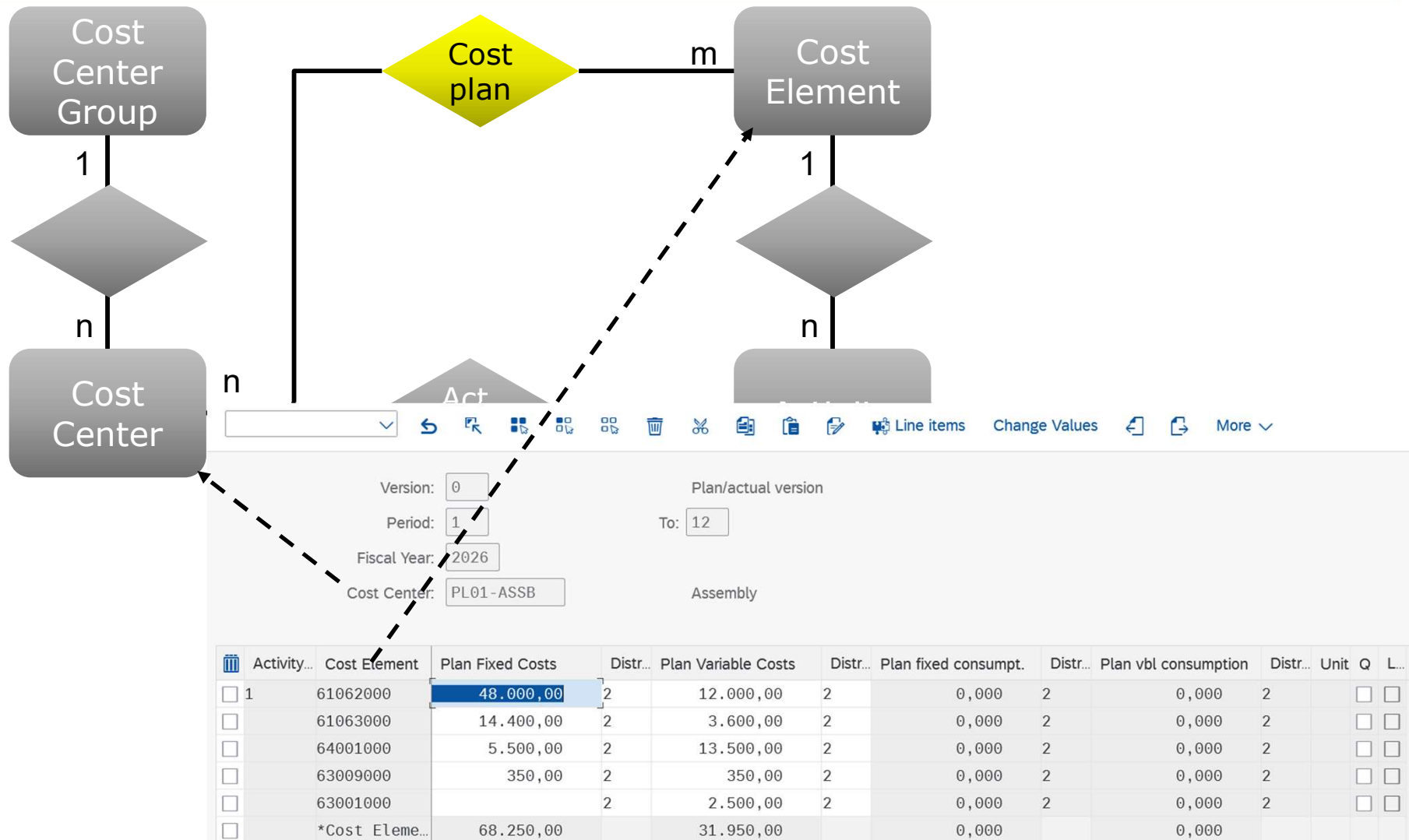
Cost Accounting



Version: Plan/actual version
 Period: To:
 Fiscal Year:
 Cost Center: Assembly

Activity...	Plan Activity	Distr...	Capacity	Distr...	Unit	Price (Fixed)	Variable price	Price U...	PL...	P...	A...	Alloc. cost el...
<input type="checkbox"/> 1	1.500	2	1.500	2	H	5.328,38	2.130,00	00100	1	<input type="checkbox"/>	<input type="checkbox"/>	94301000

Cost Accounting

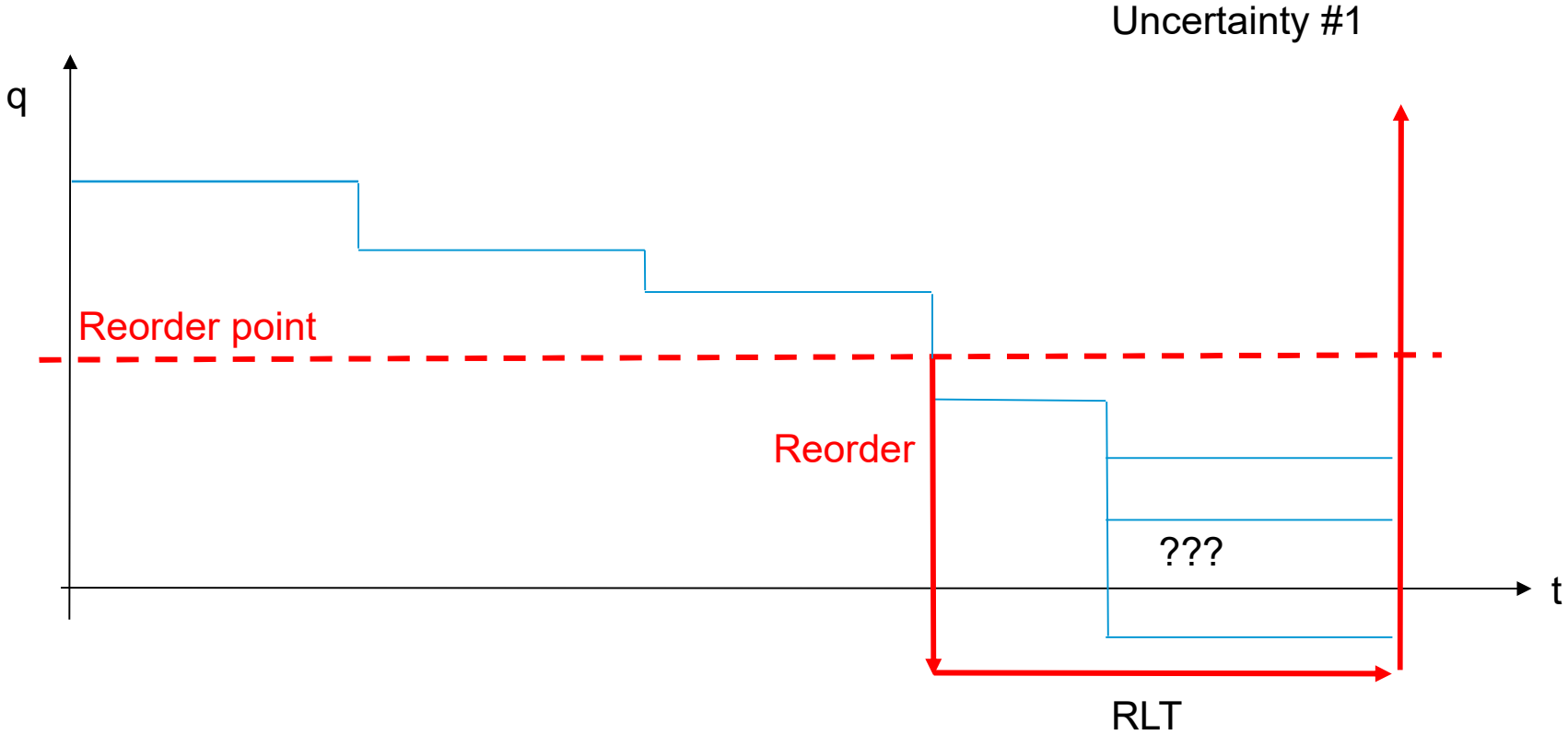


Service flow

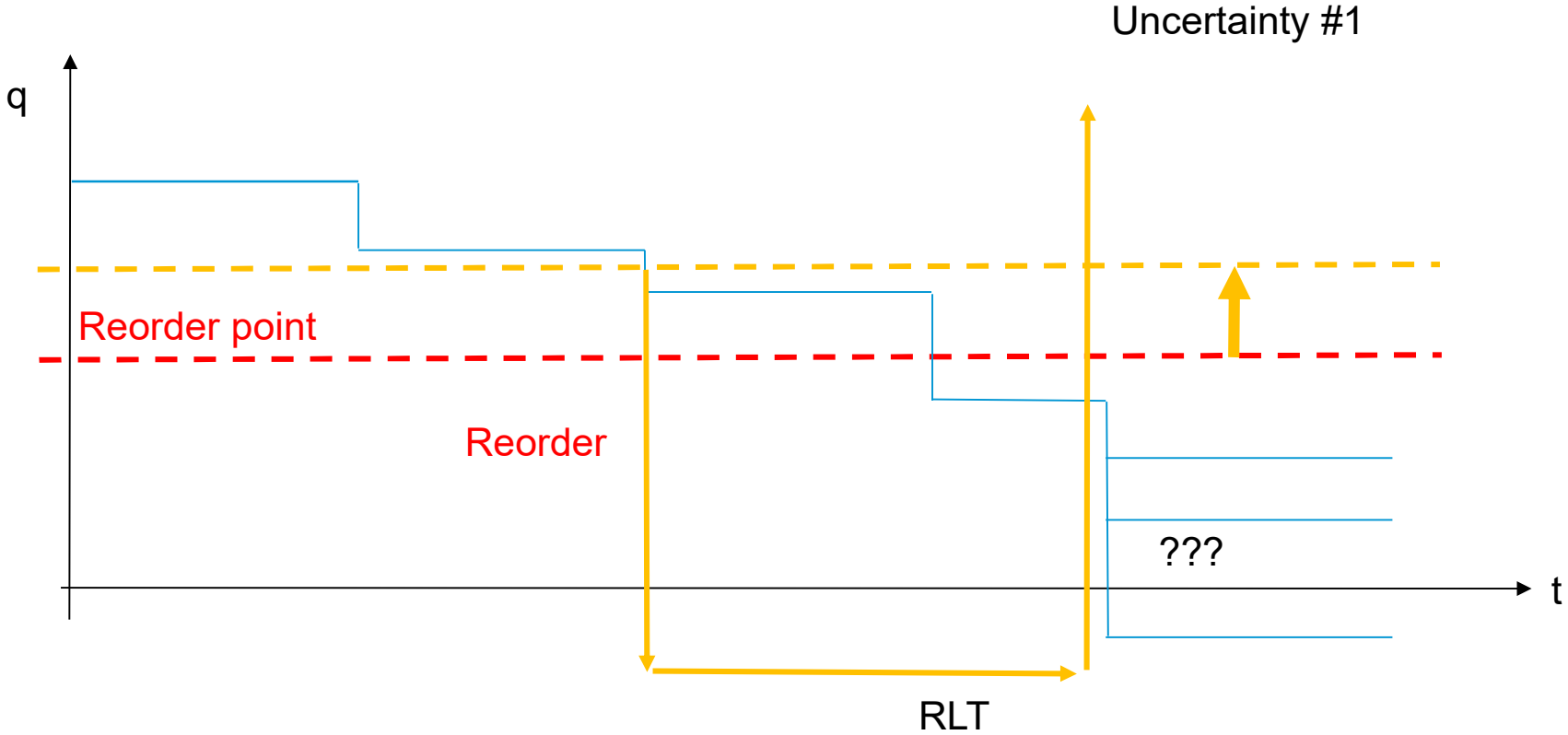
Also activities

	Hours uptime	m2
Assembly	1500	100
Cutting	1500	100
Q-Check	1400	50
Heating		
Maintenance		25
Production planning		25
Storage	2000	200

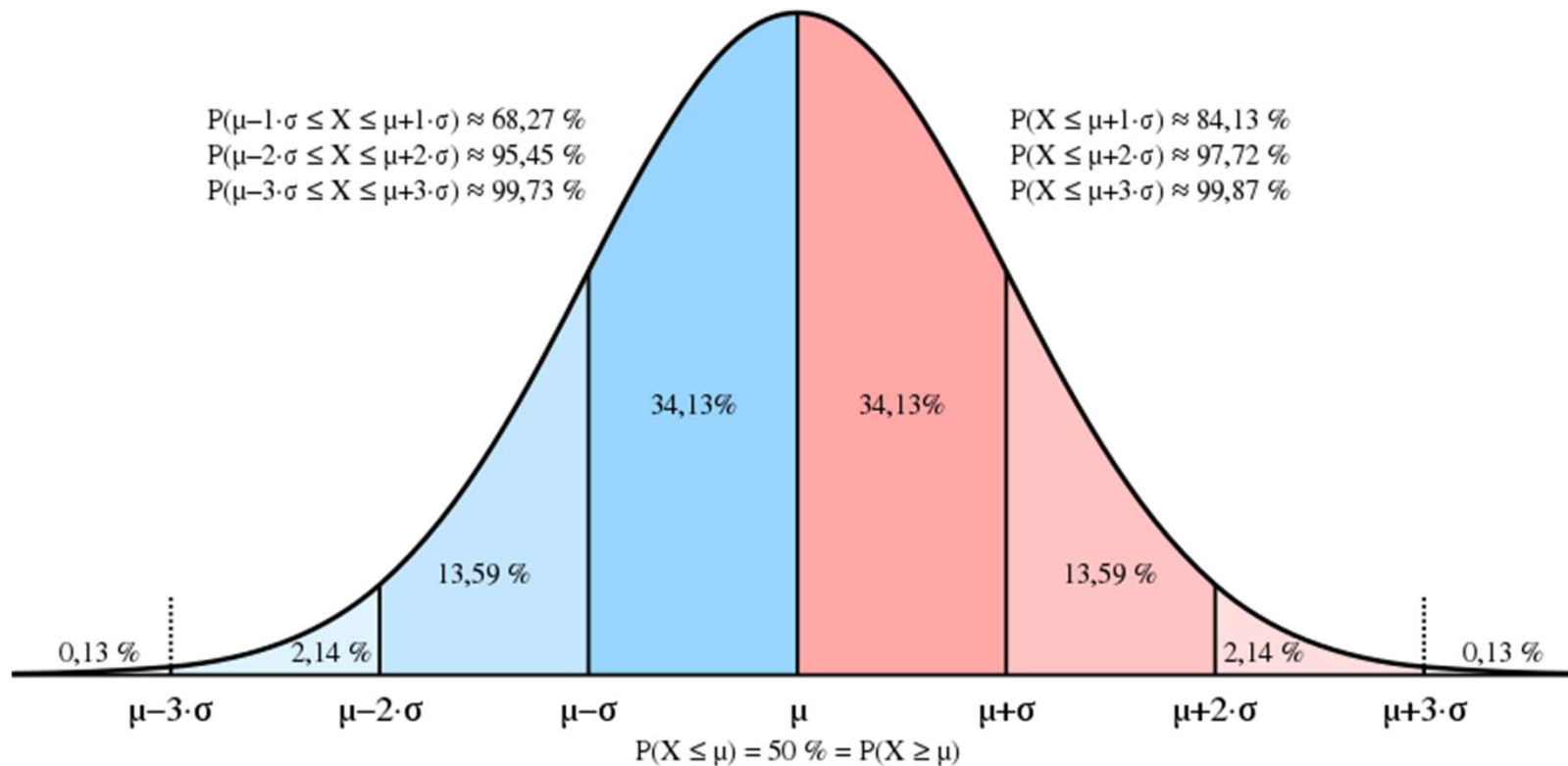
Consumption-based planning



Consumption-based planning

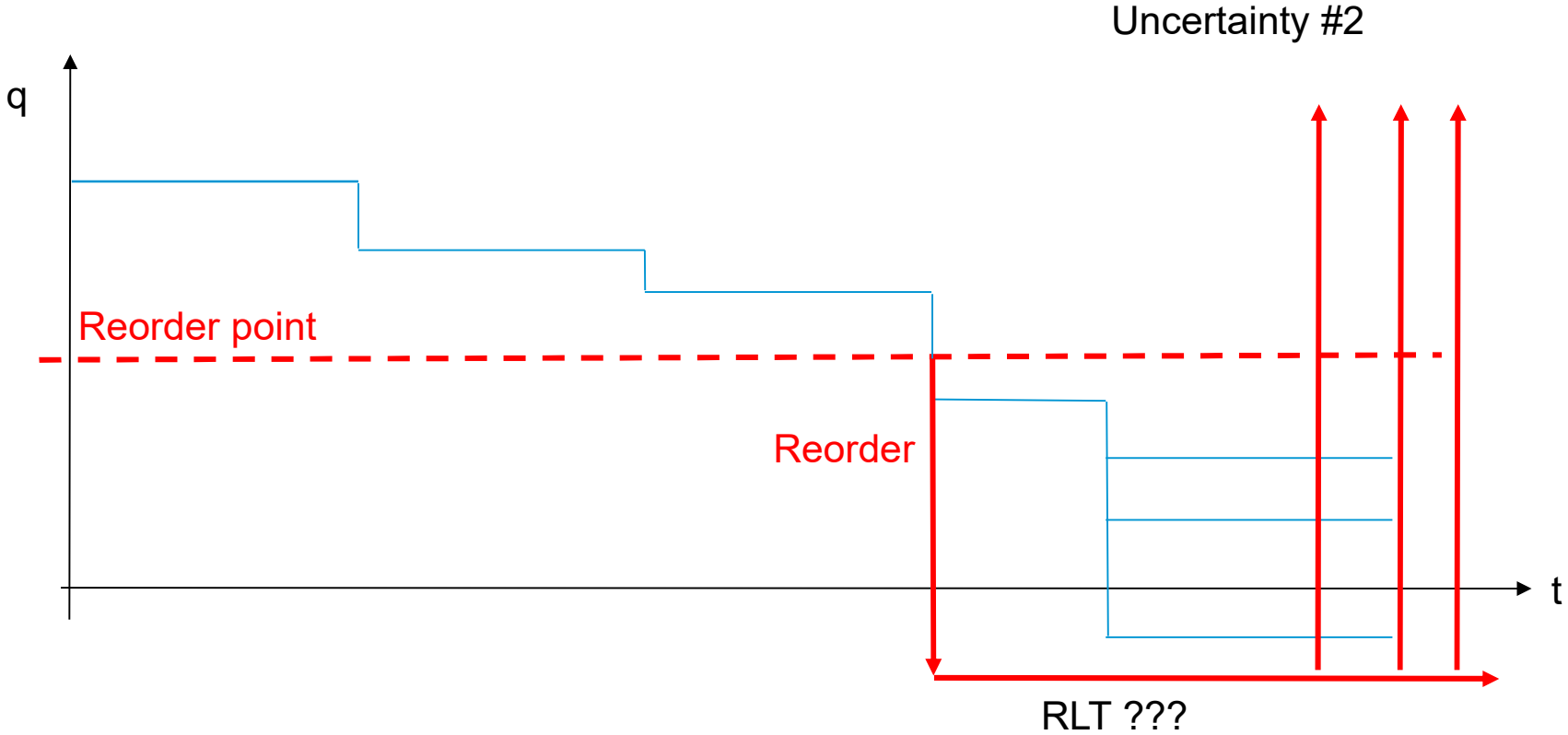


Consumption-based planning

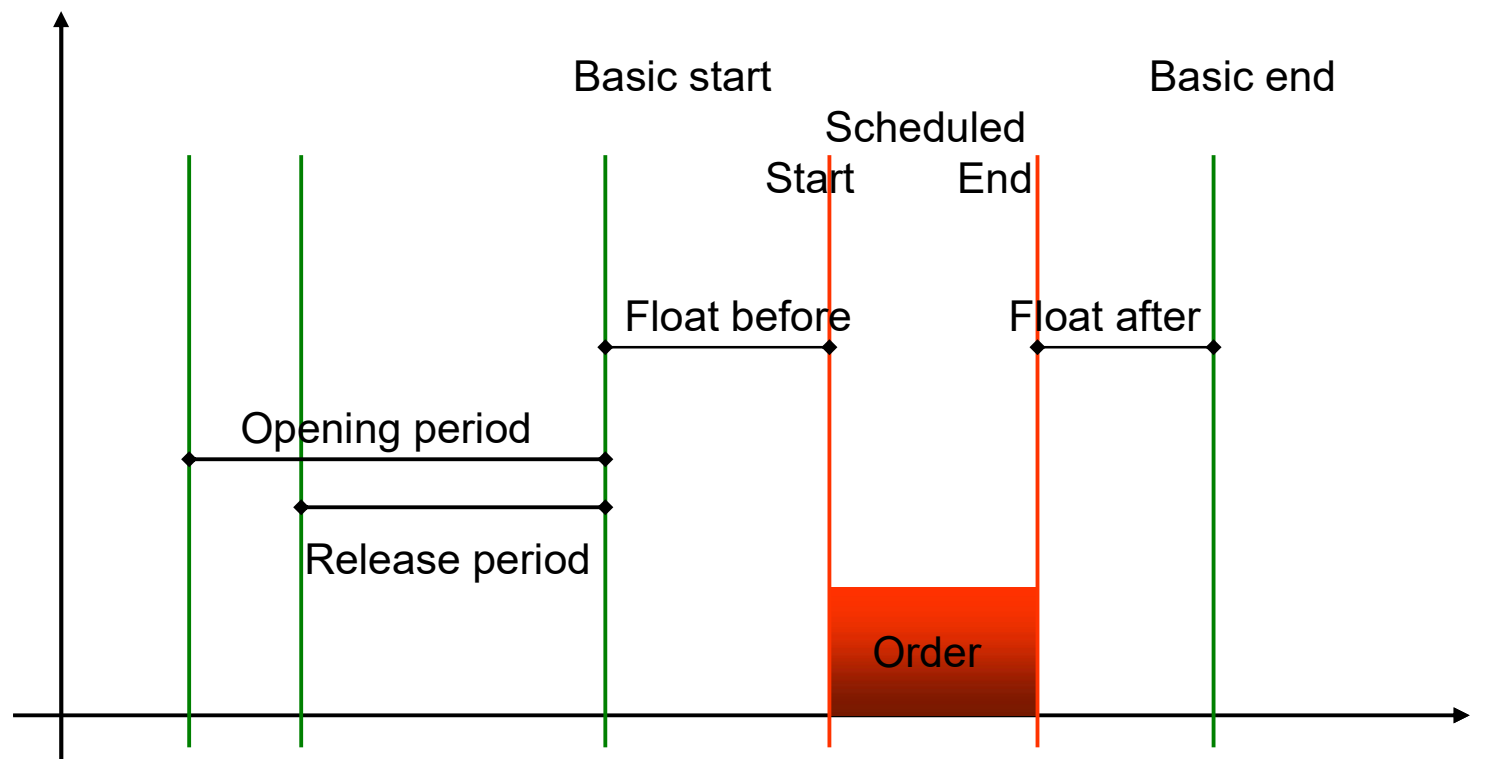


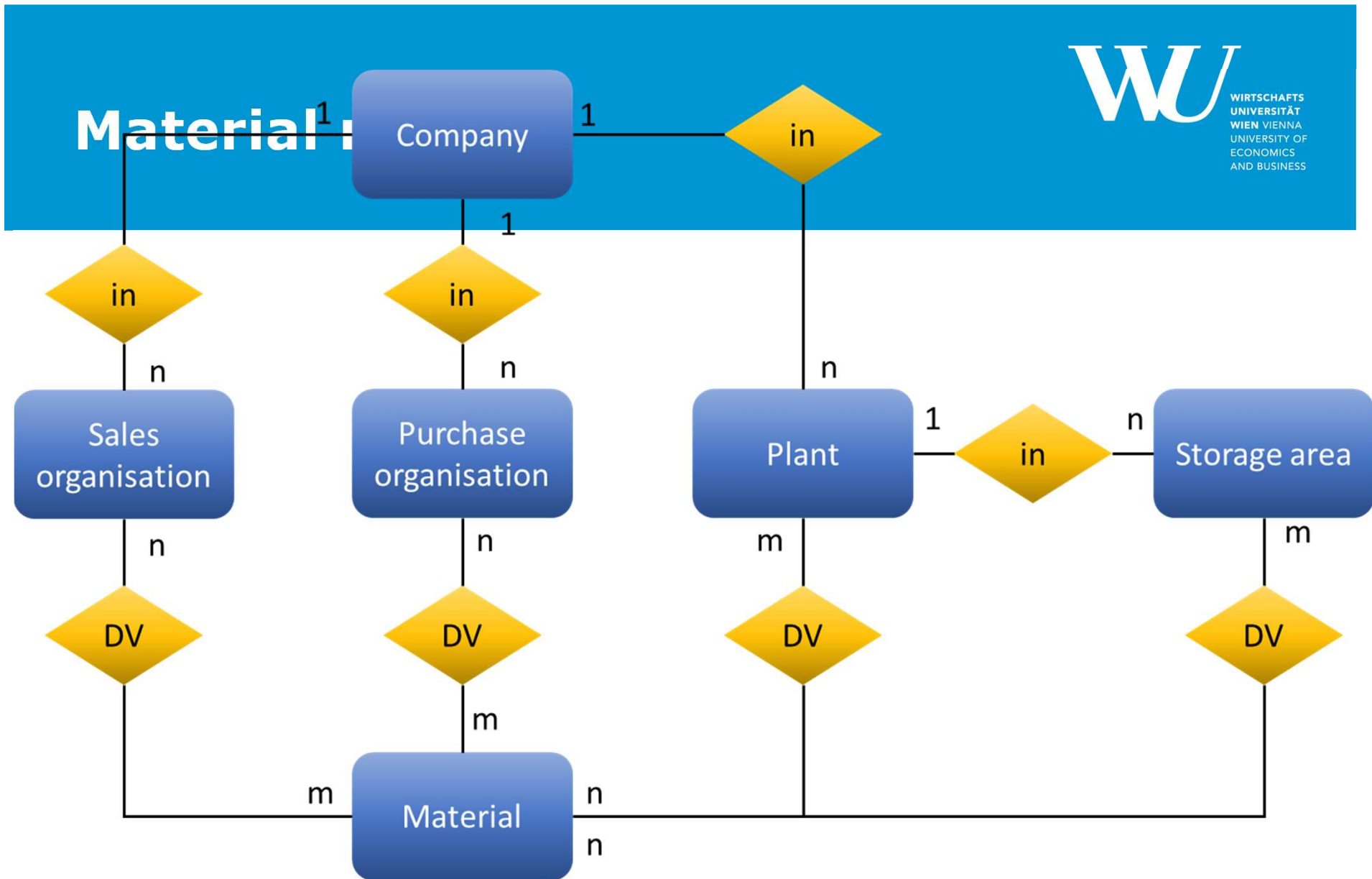
Source: https://commons.wikimedia.org/wiki/File:Normal_Distribution_Sigma.svg, Creative Commons

Consumption-based planning



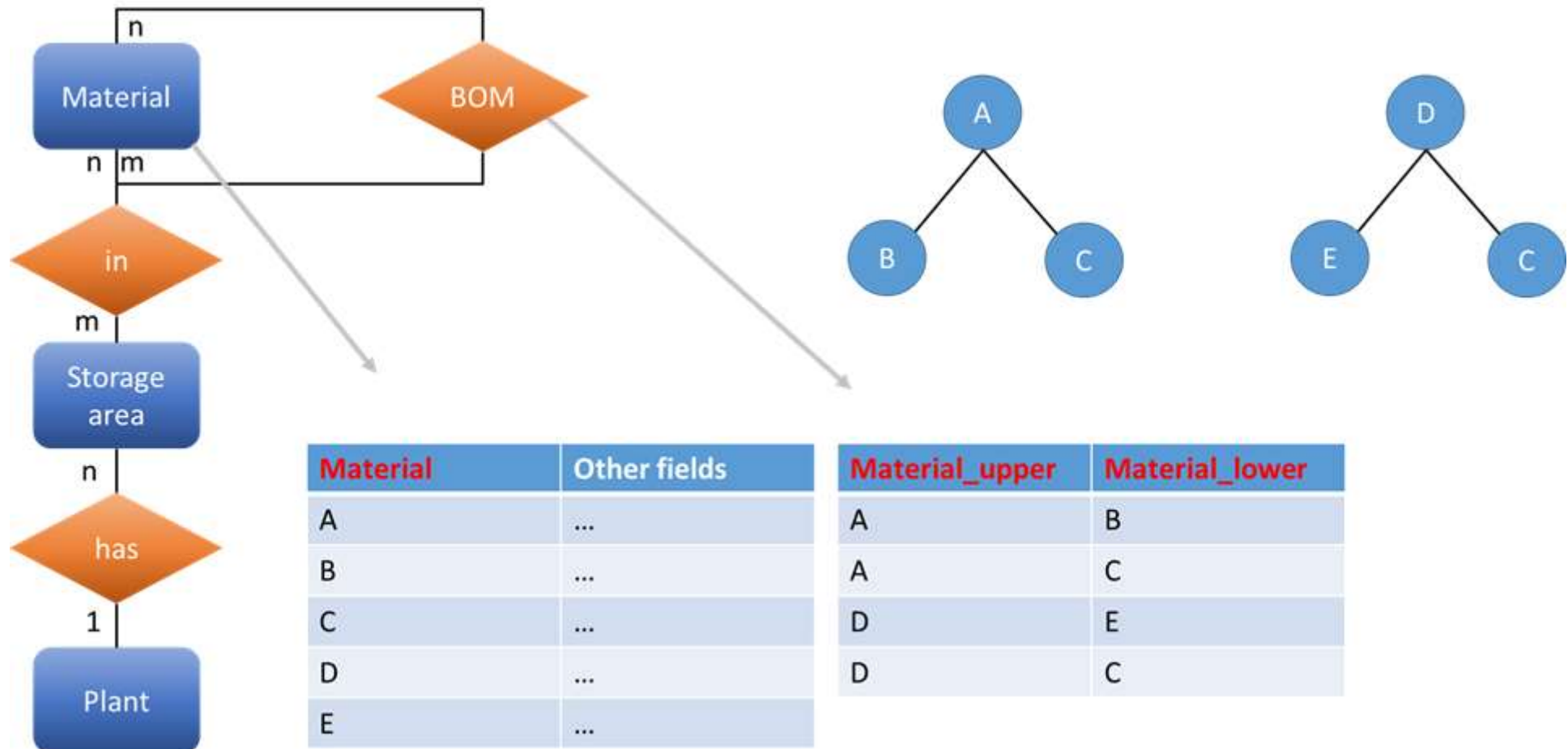
Scheduling margin key



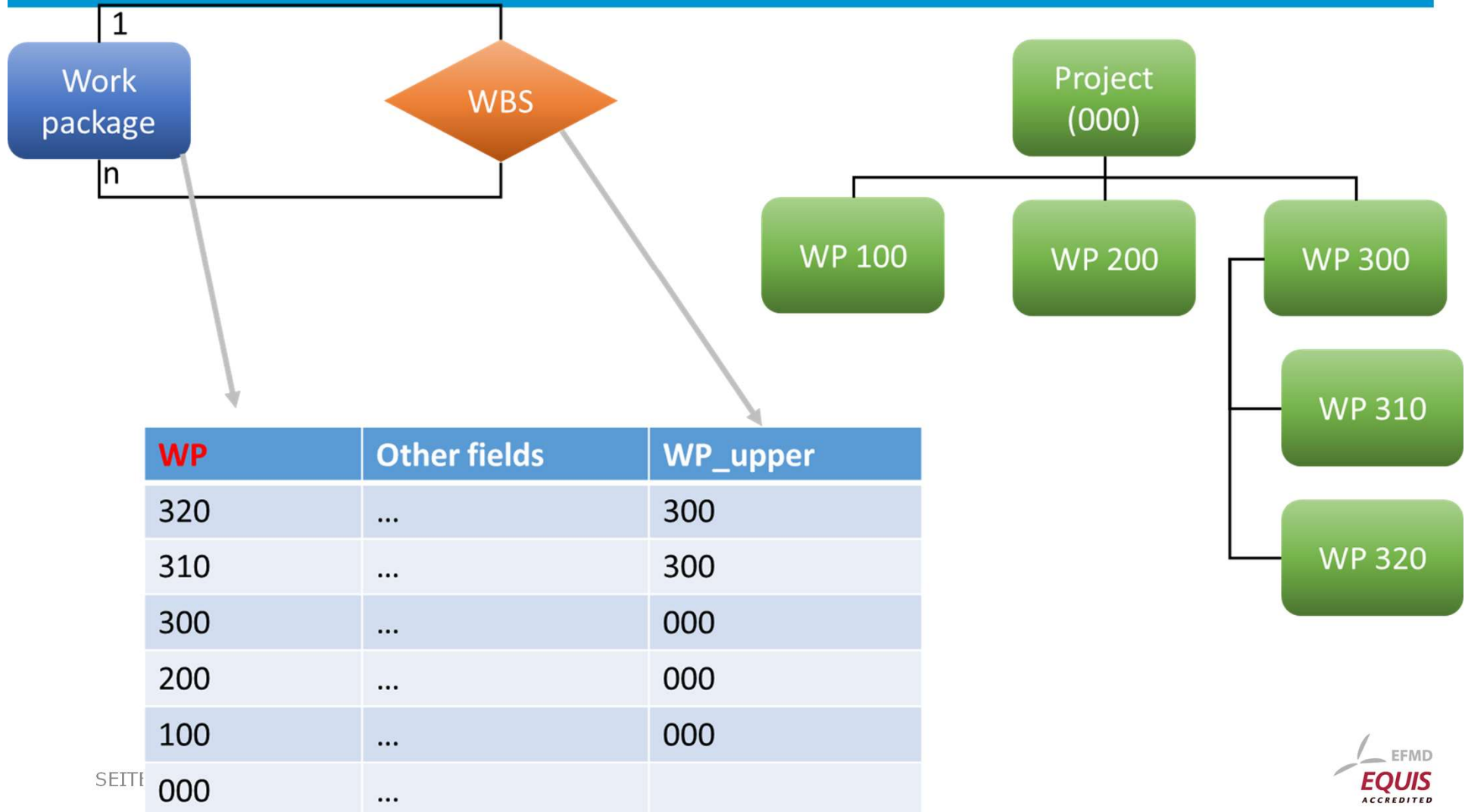


SEITE 31
 DV ... Data view, one or more tabs in the material master

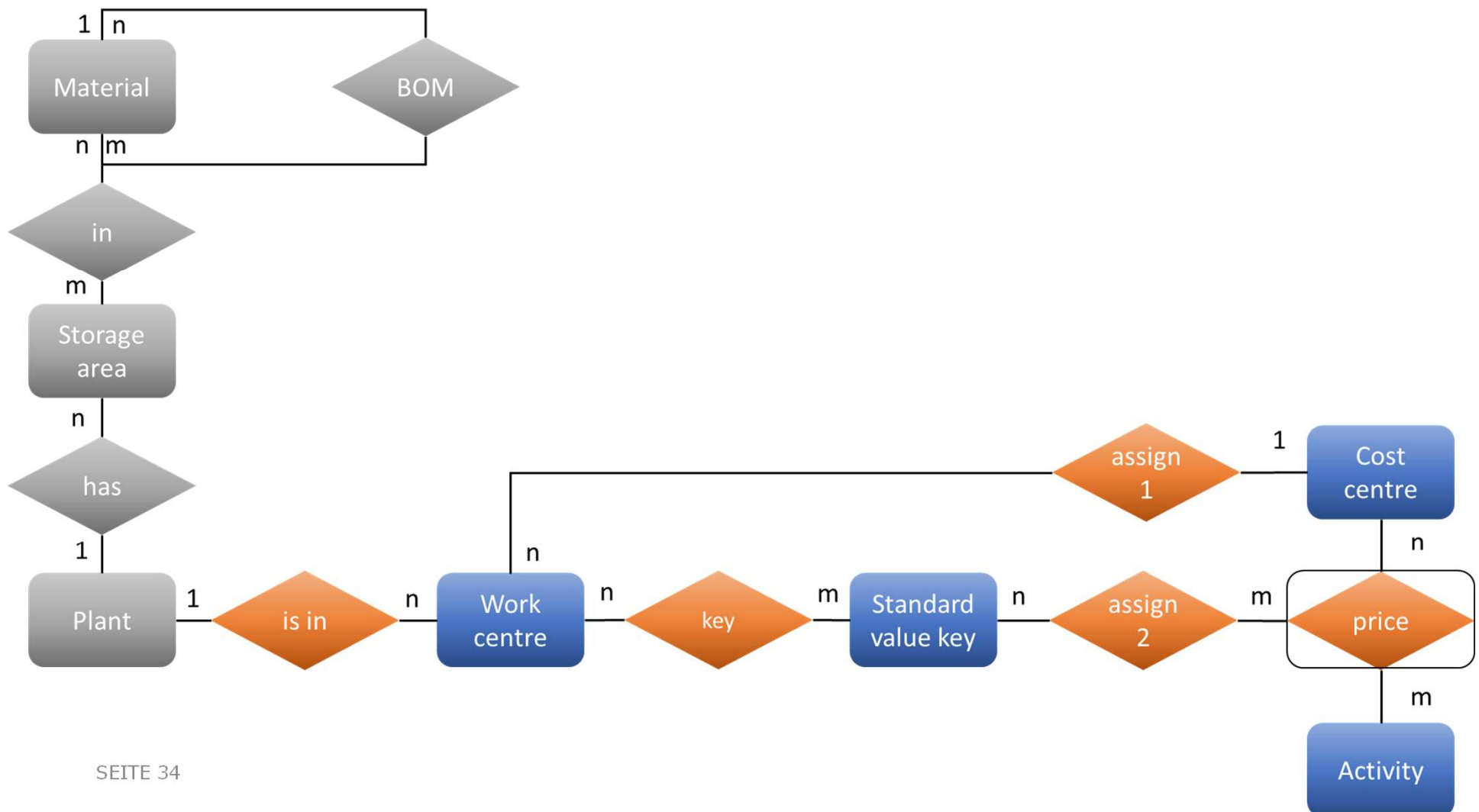
MRP



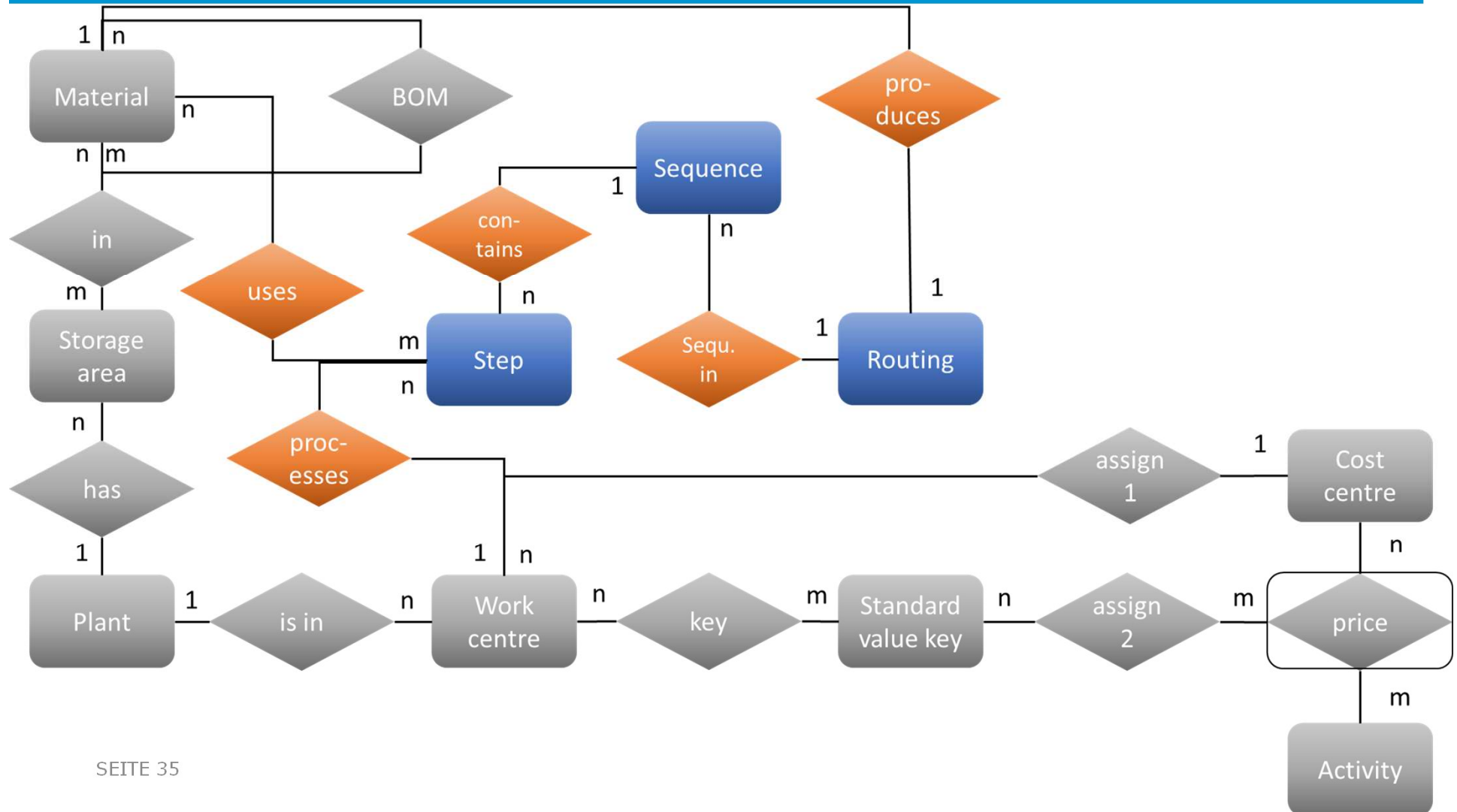
MRP



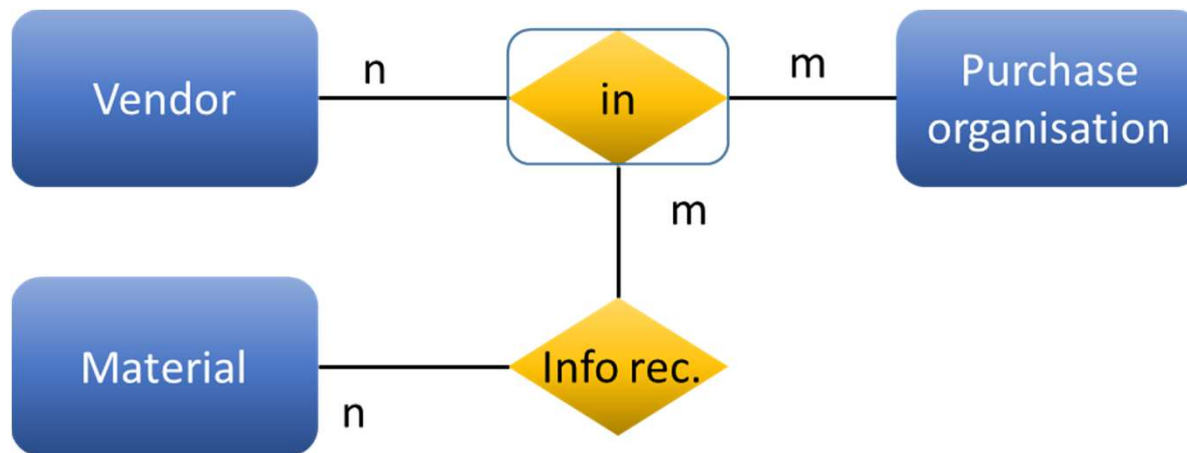
MRP



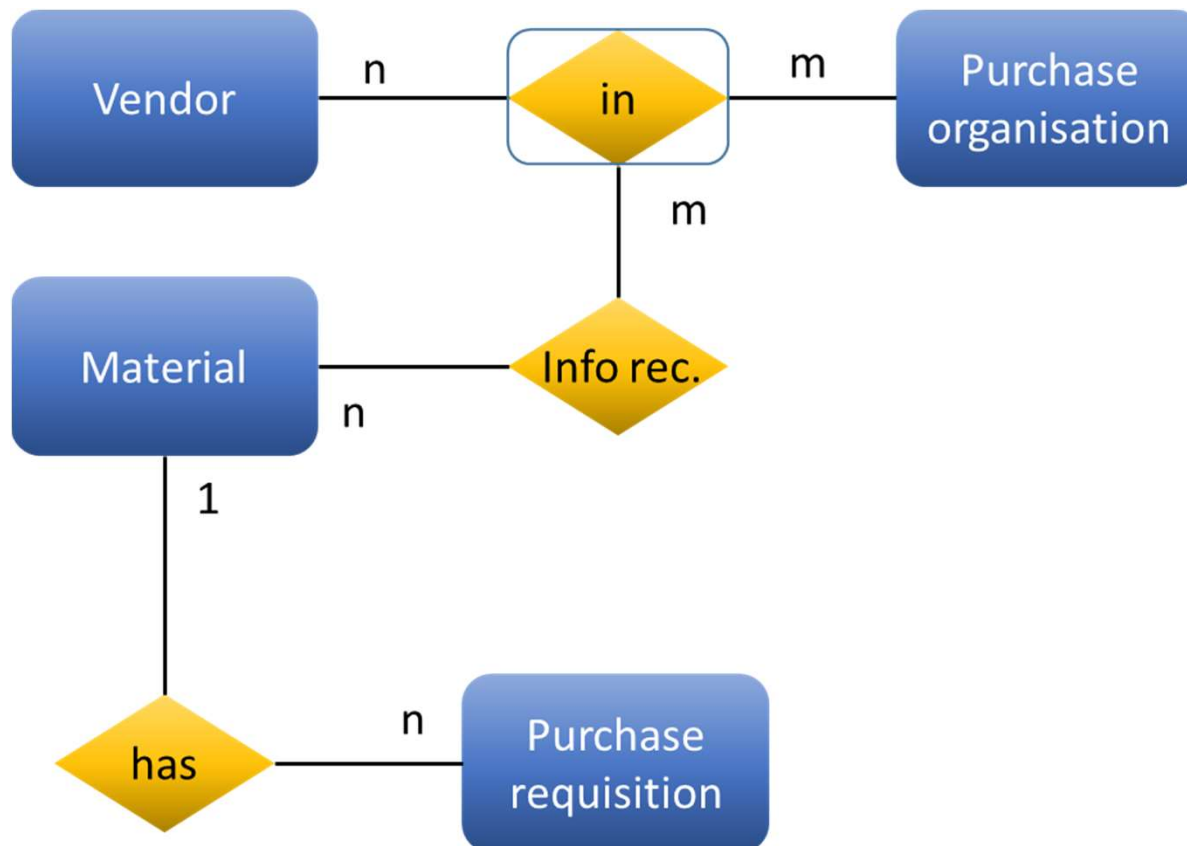
MRP



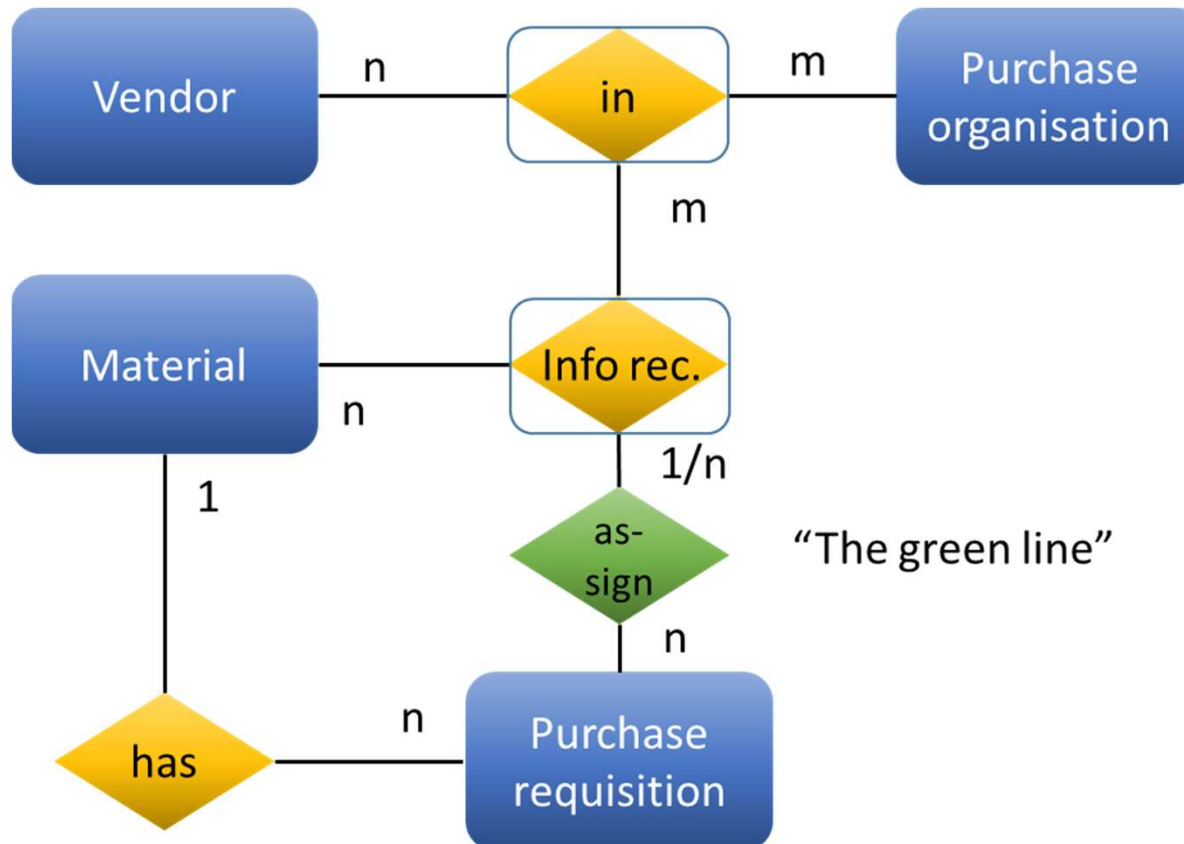
Procurement



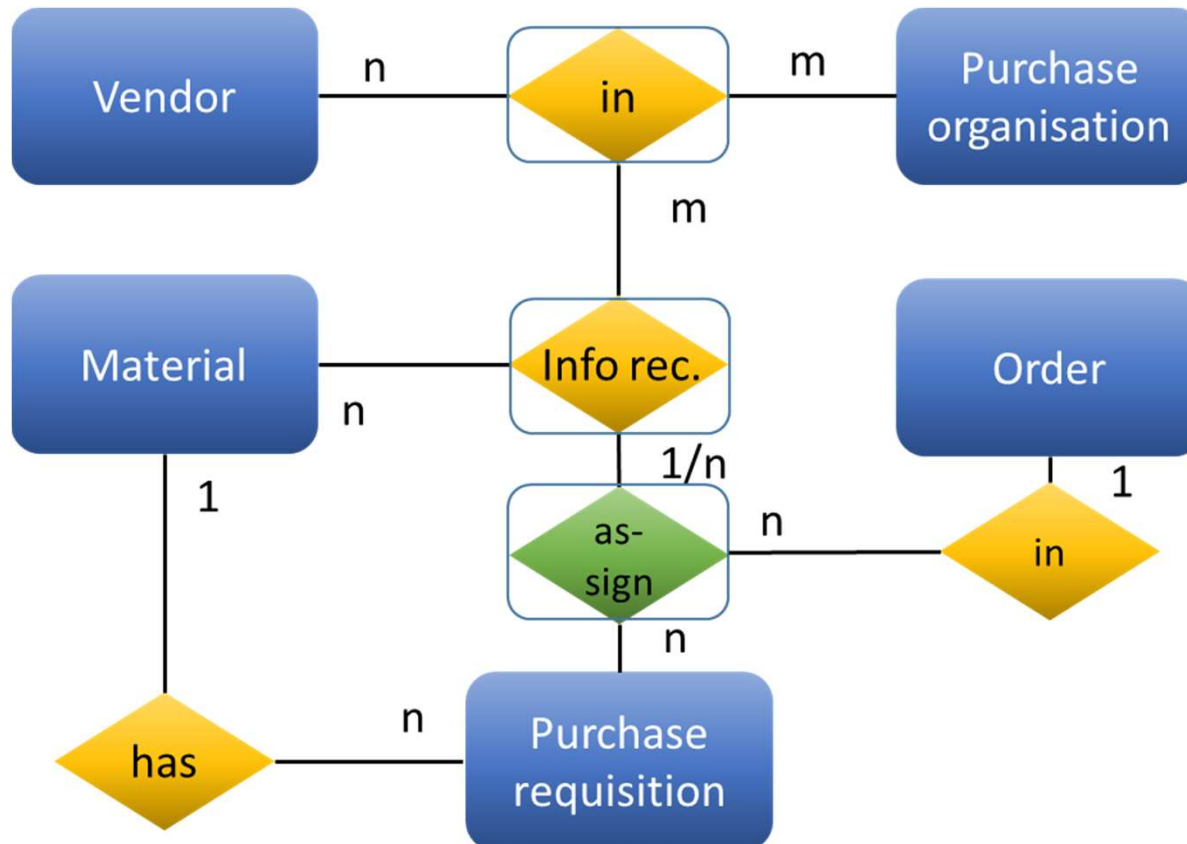
Procurement



Procurement



Procurement



Production

Order release

Goods issue

Confirmation

Goods receipt

OH/actual

Settlement

Production

Order release

Goods issue

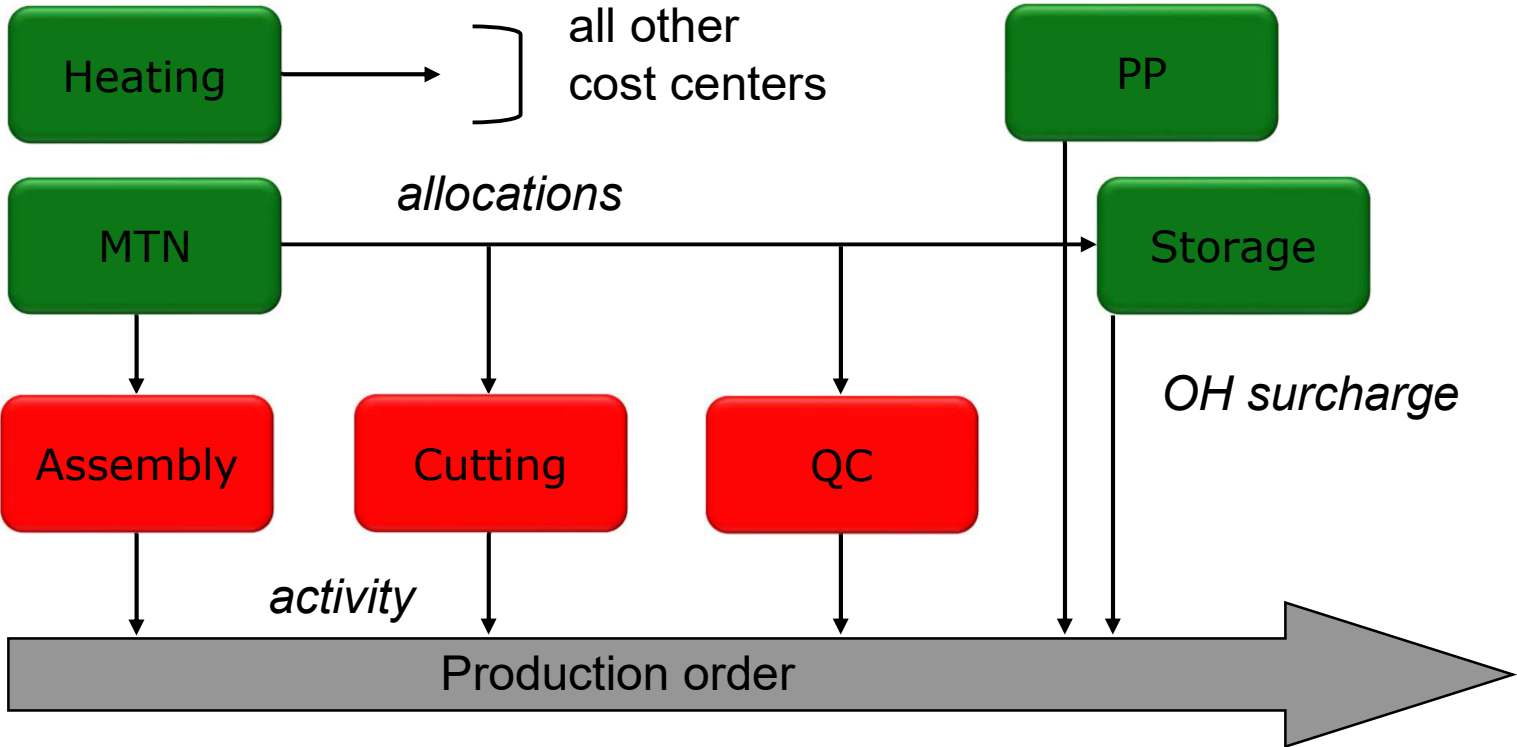
Confirmation

Goods receipt

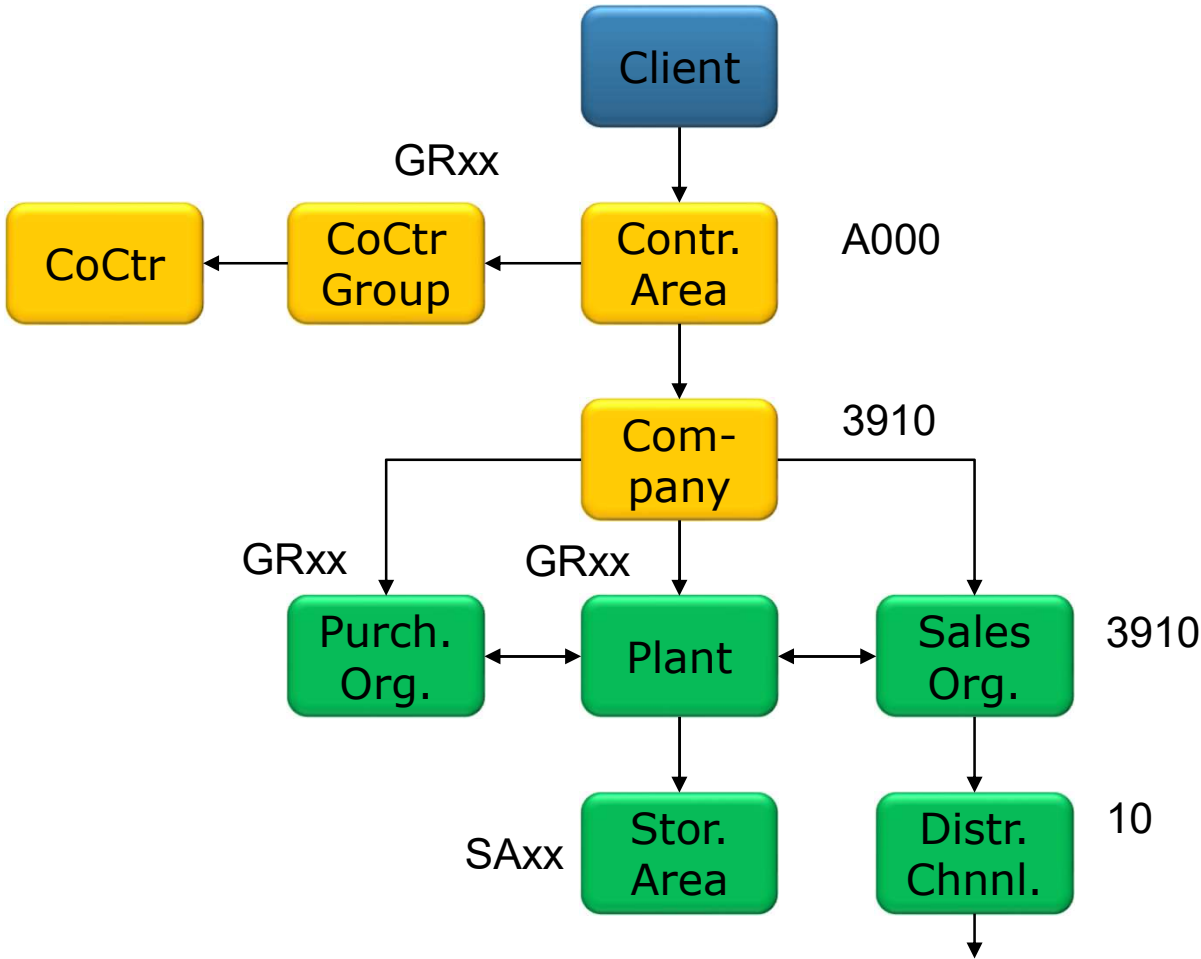
OH/actual

Settlement

Cost Accounting



Organisational Structure – Case Study



Division, sales office, sales group ...