

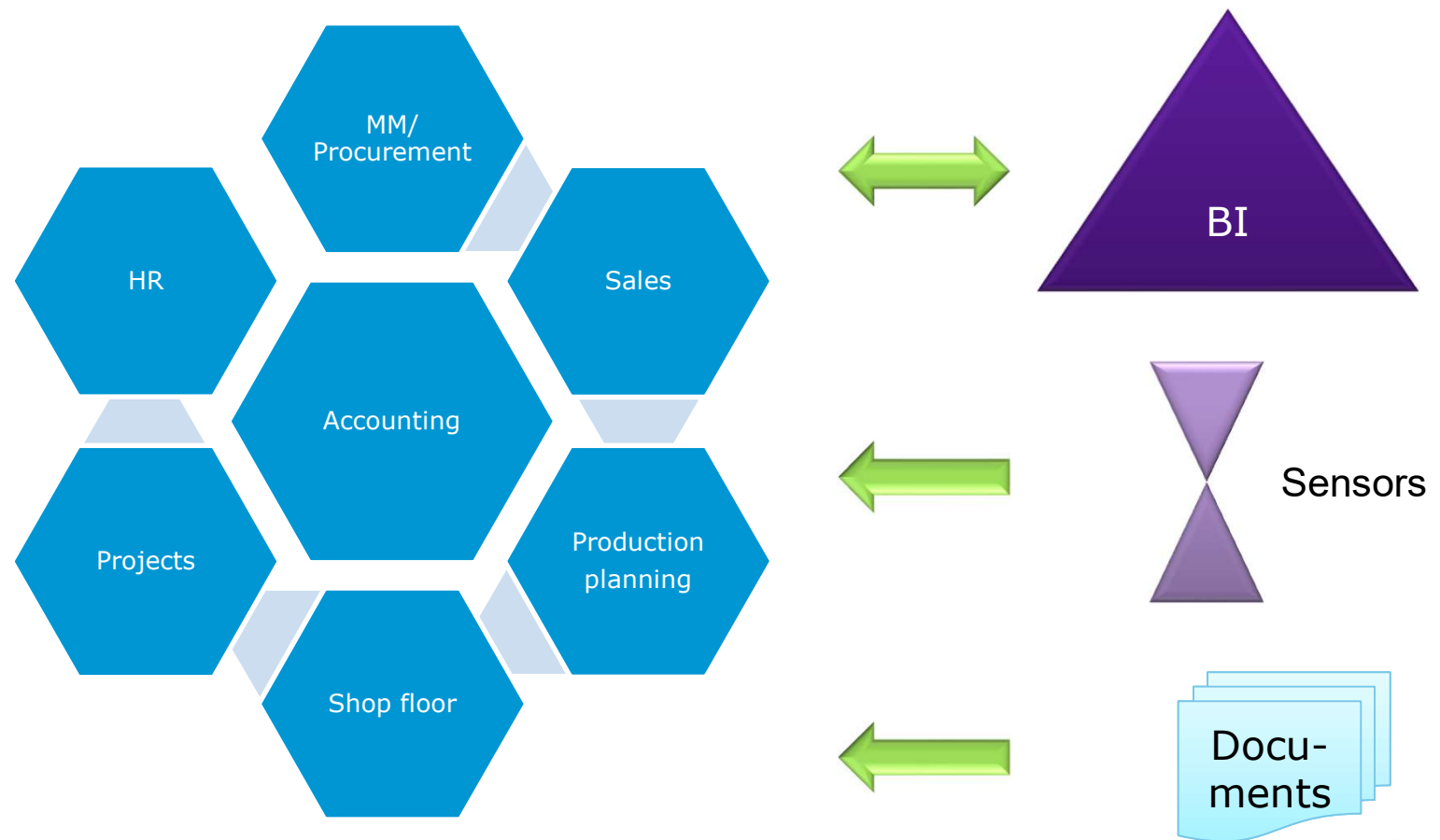
ERP4PA – The Service Yard

Robert Müller-Török
Alexander Prosser

Private sector



Private sector



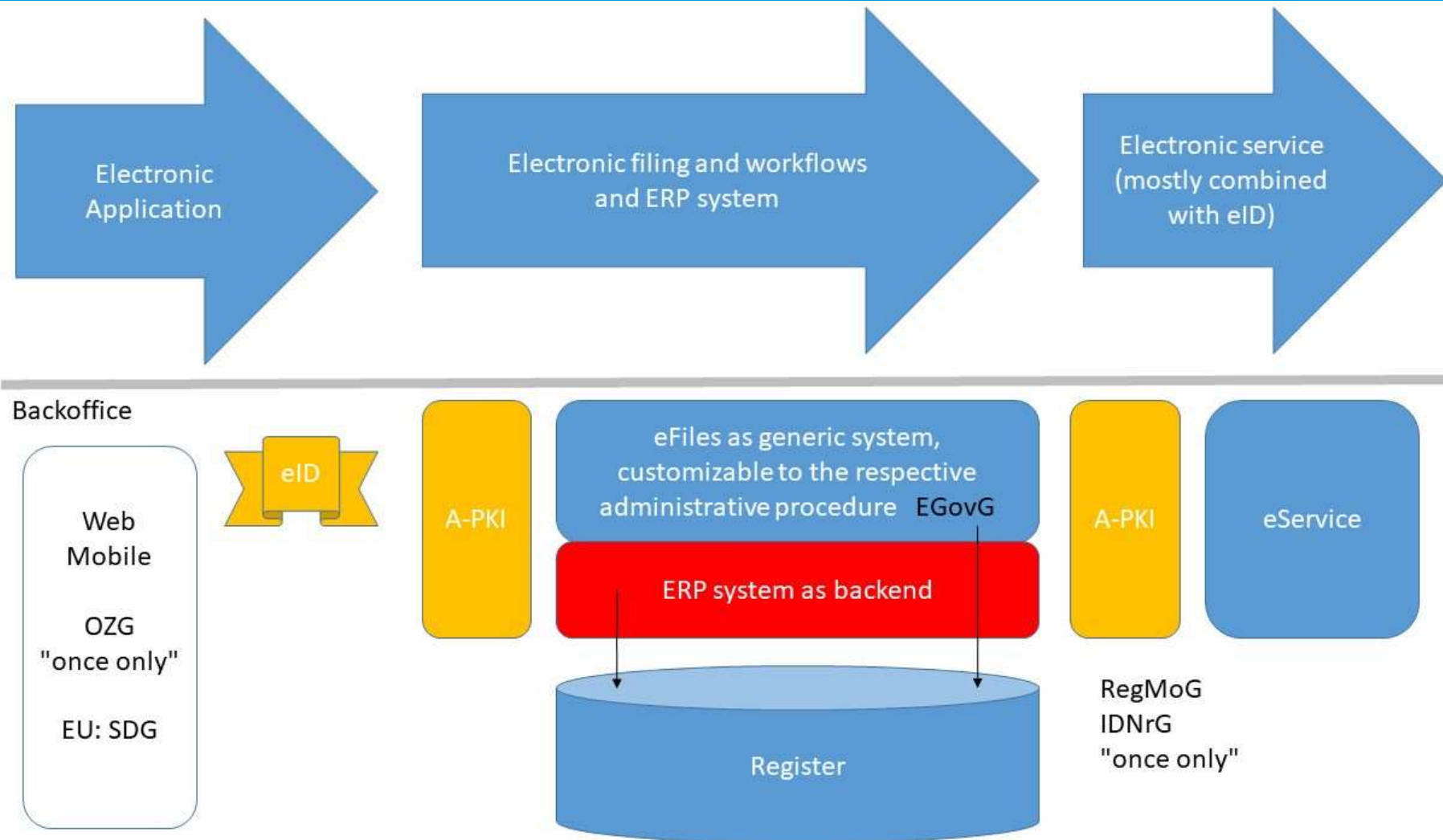
And the public sector ?

... and public sector higher education ?

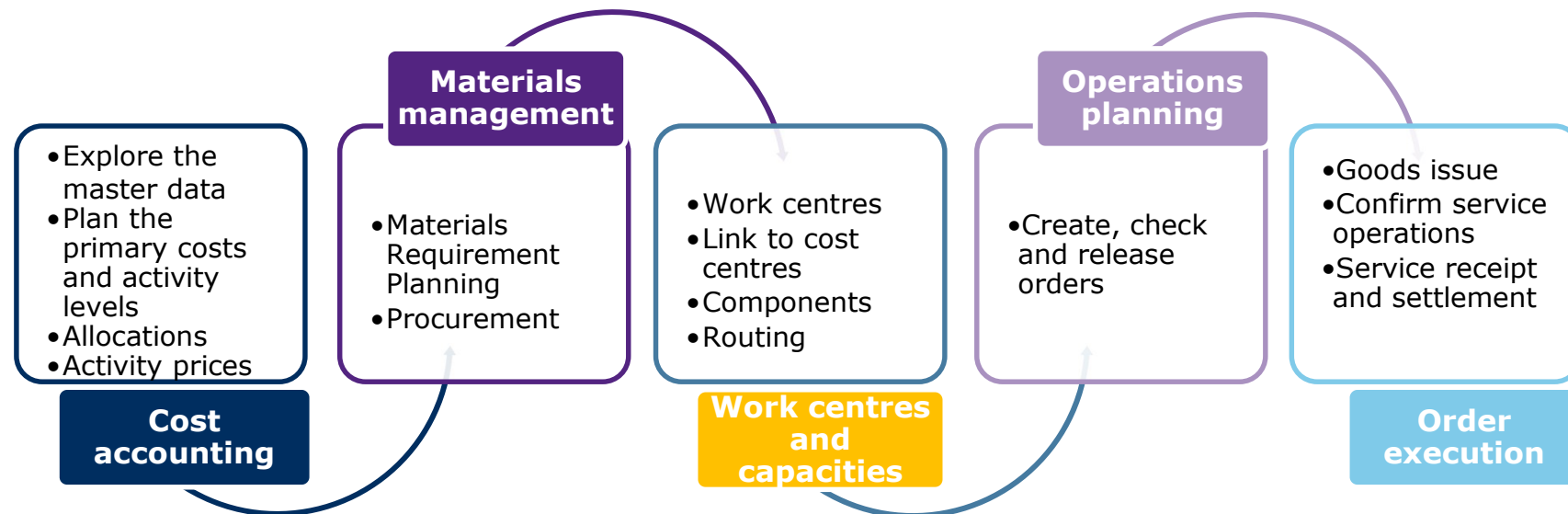


Source: Wikipedia.org

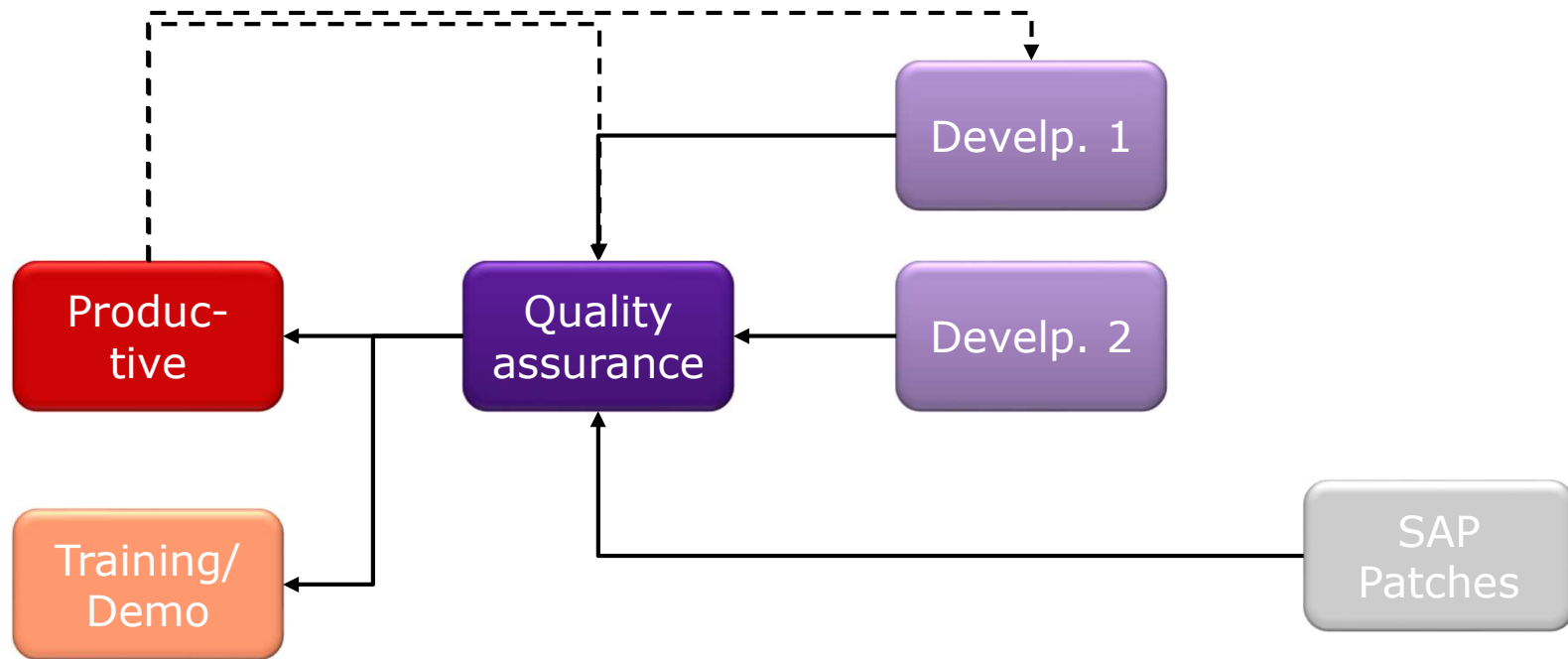
The Big Picture



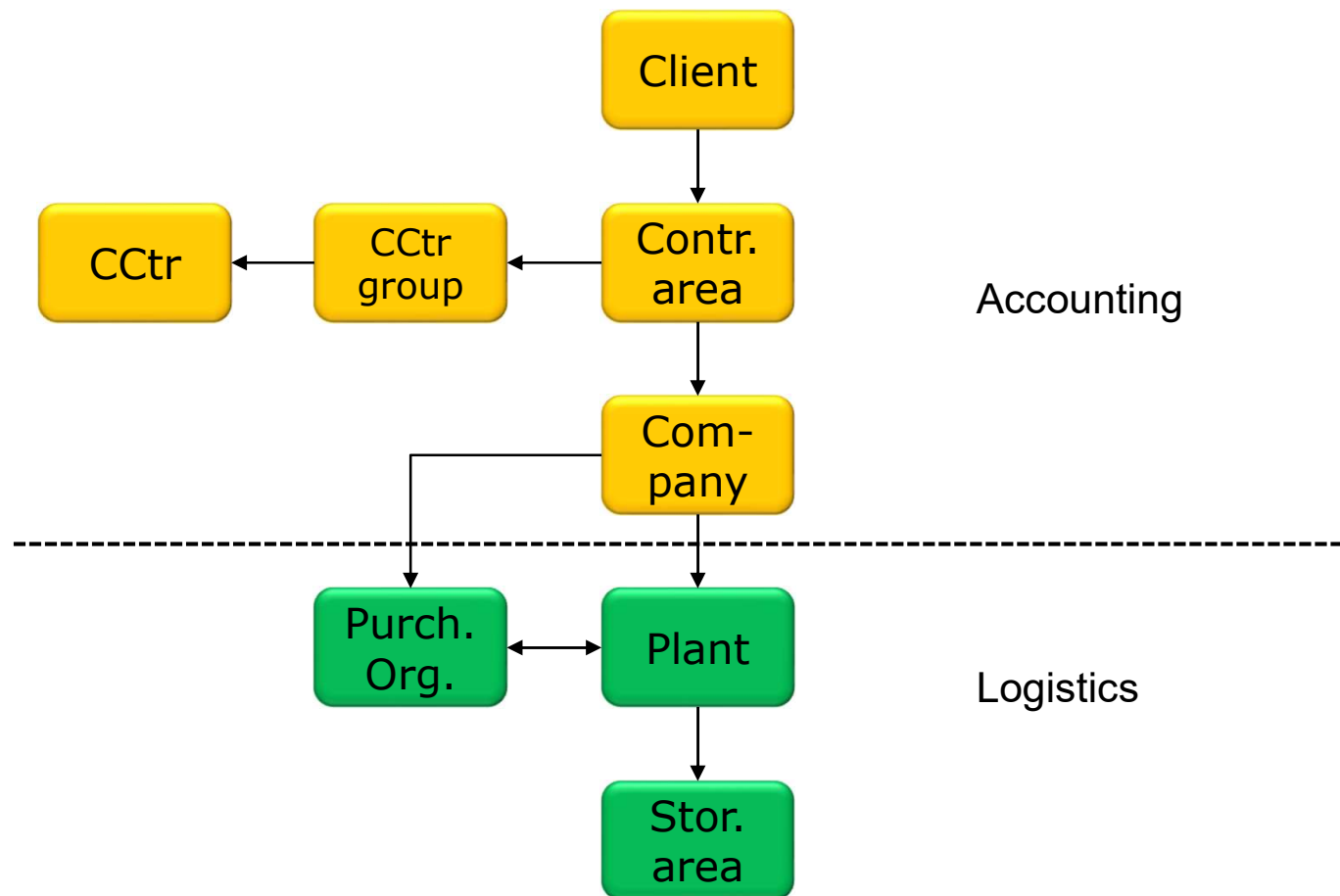
Overview

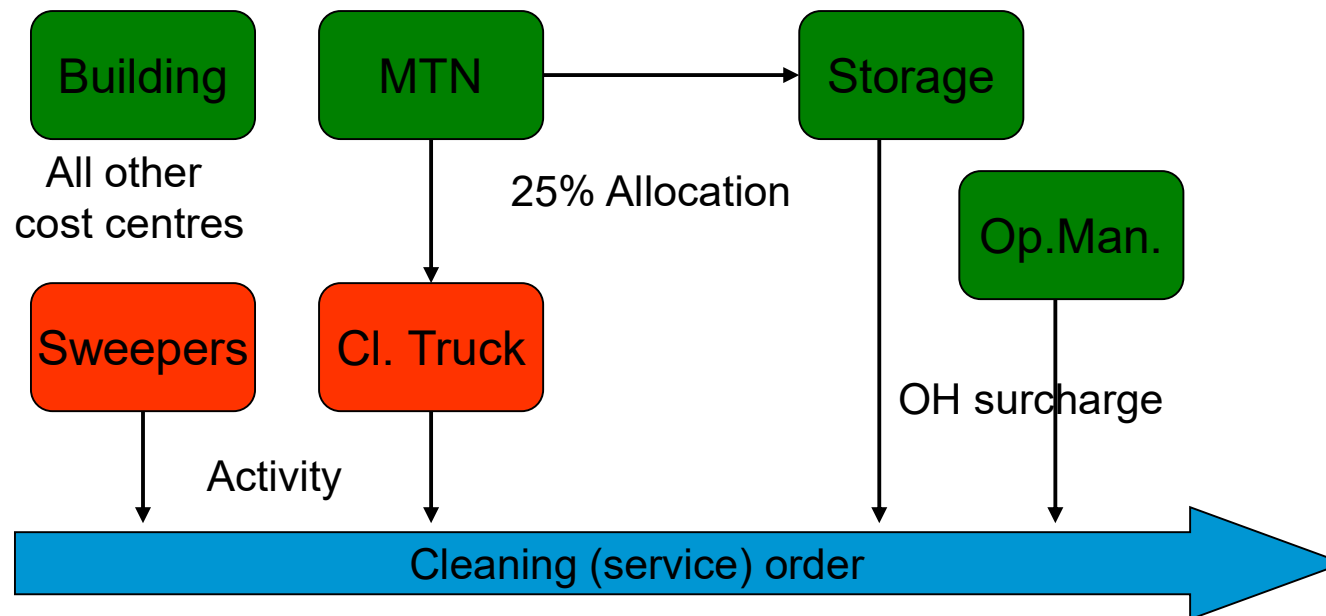


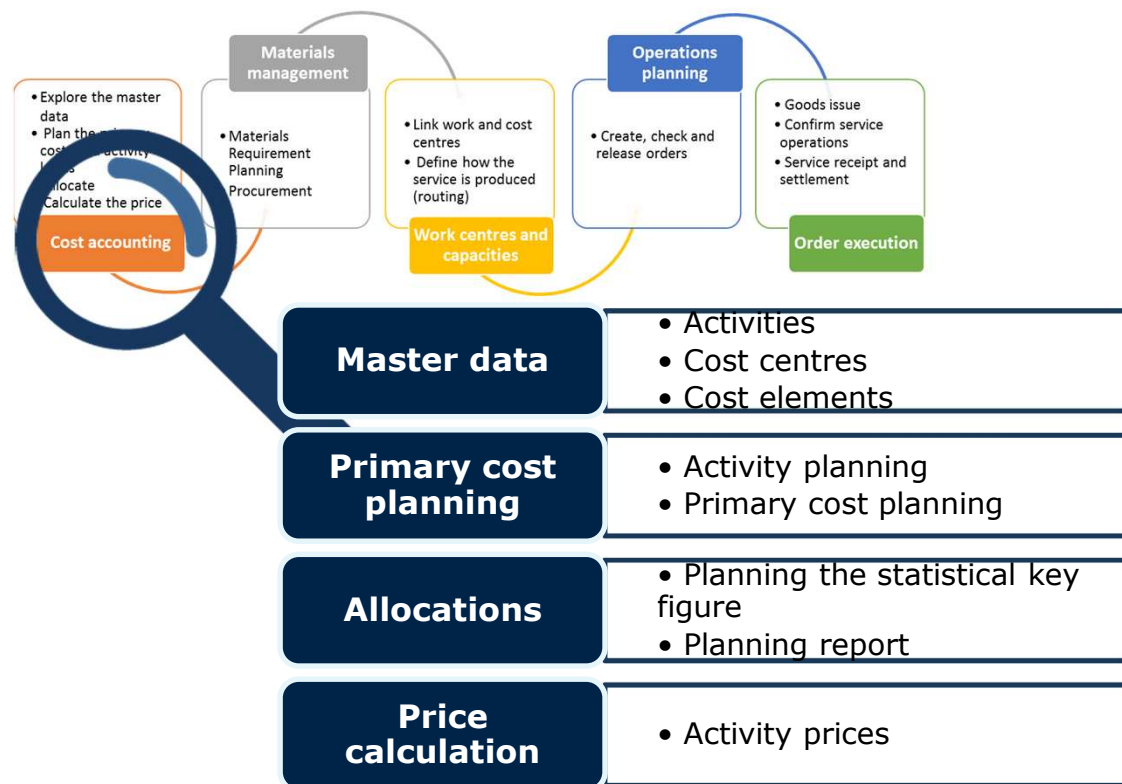
Client Systems



Organisational Structure







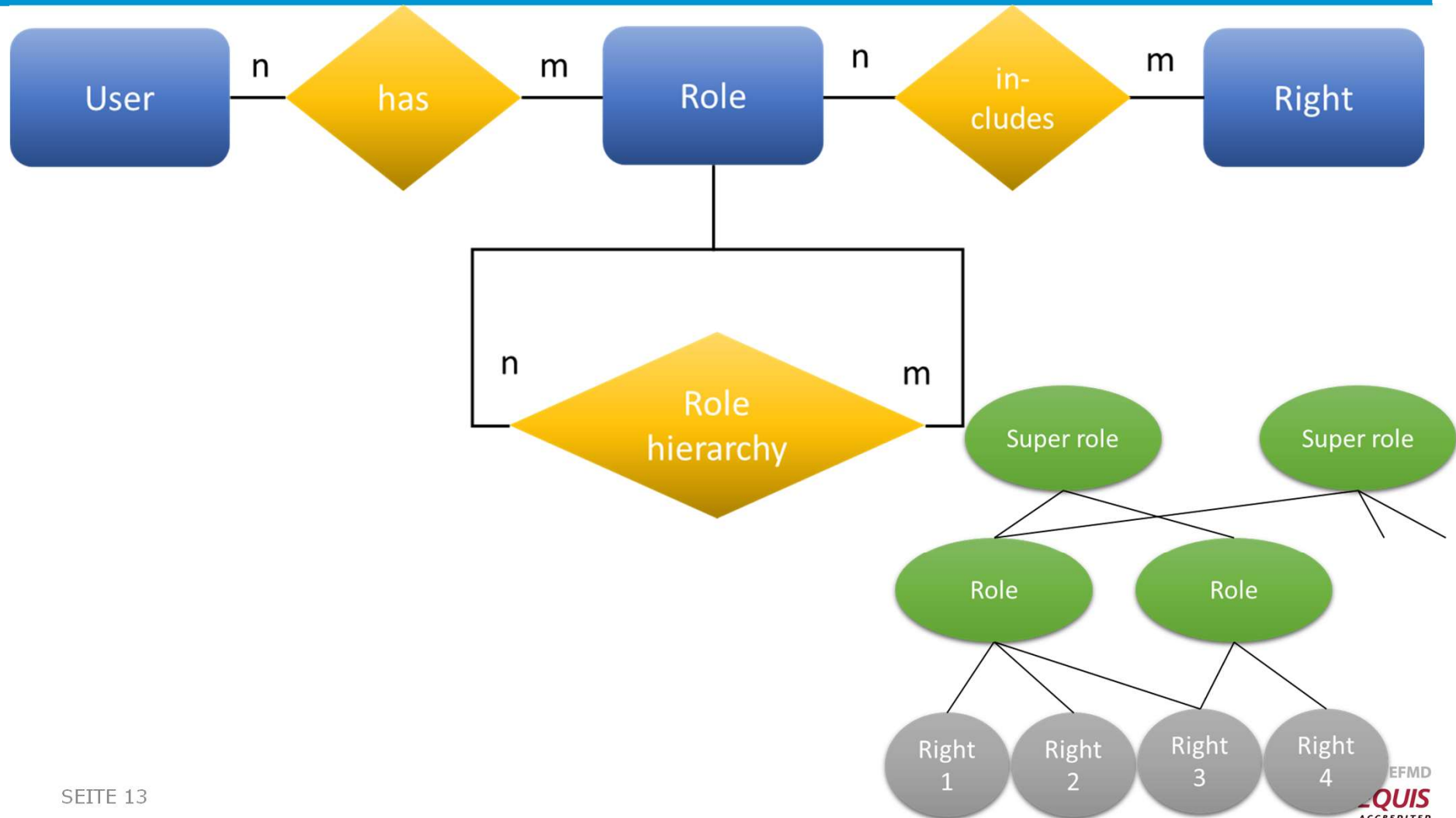
State-of-the-art Access Management



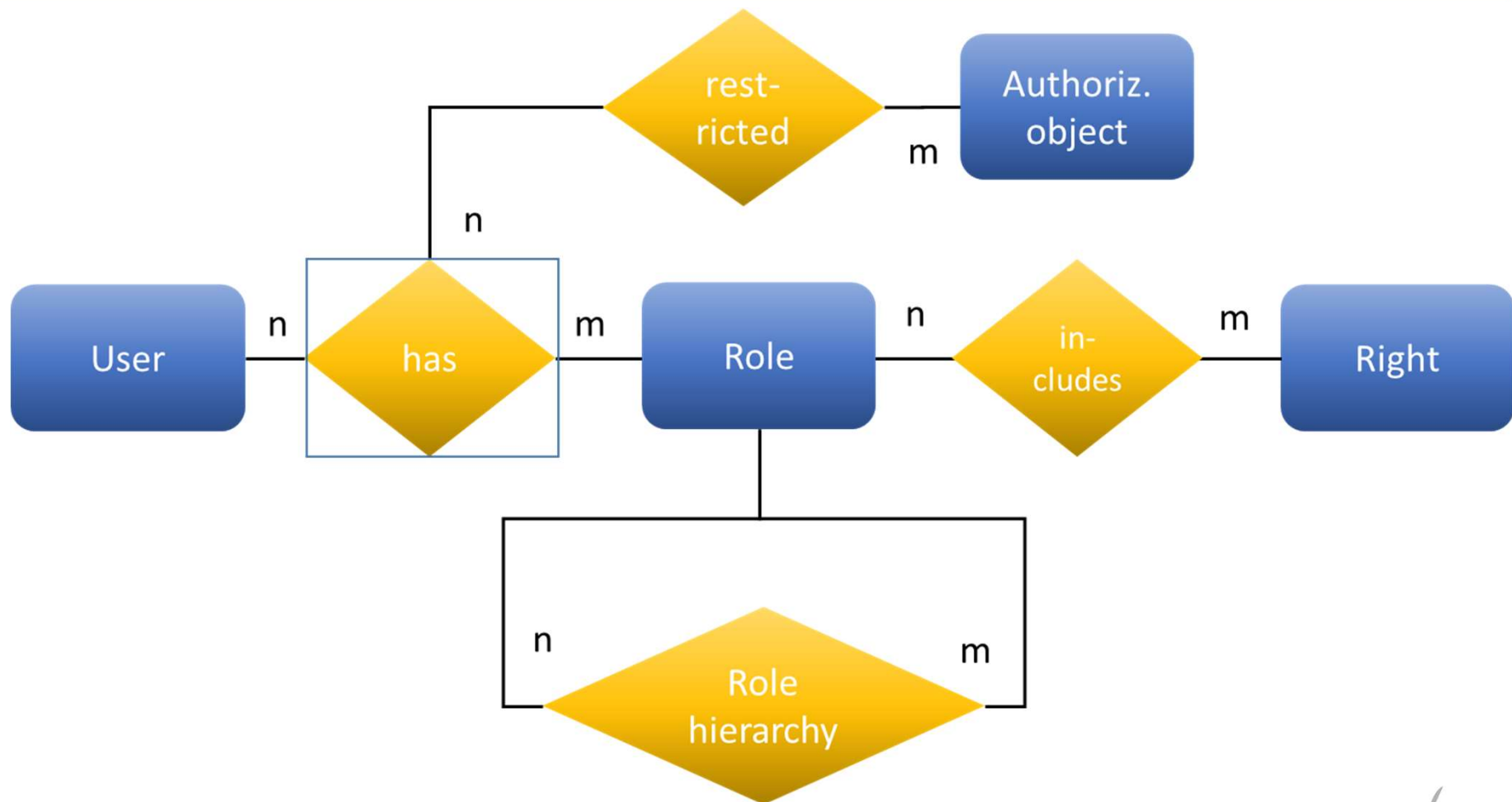
State-of-the-art Access Management



State-of-the-art Access Management



State-of-the-art Access Management



Cost Accounting



SAP Display Cost Center: Basic Screen

Cost Center: CV01-SWEEP Sweepers
Controlling Area: A000 Civitas
Valid From: 01.01.2025 to: 31.12.9999

Names
Name: Sweepers
Description: Road sweepers

Basic data
User Responsible: PROSSER PROSSER
Person Responsible: Alexander Prosser
Department: IPM
Cost Center Category: F Production
Hierarchy area: CV01 Civitas 01
Business Area: 0001 Civitas
Functional Area: 0001 Road cleaning
Currency: EUR
Profit Center: YB110 Road Cleaning

Cost centre group

1

is in

n

Cost centre

Activity

n

assign

1

Cost element

SAP Display Activity Type: Basic Screen

Activity Type: 1 CLEAN-H
Controlling Area: A000 Civitas
Valid From: 01.01.2010 to: 31.12.9999

Names
Name: CLEAN-H
Description: Cleaning Hours

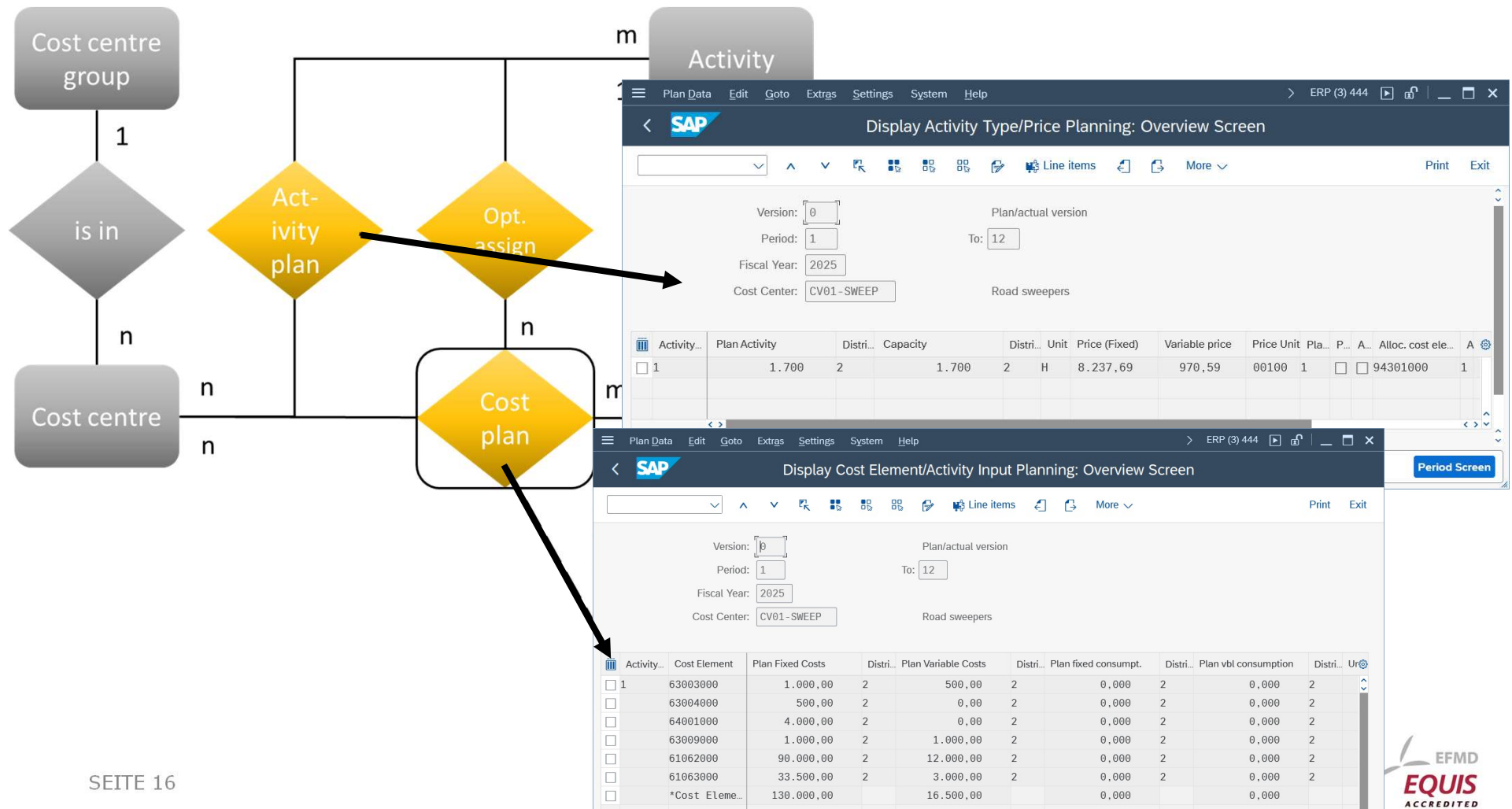
Basic data
Activity Unit: H Hours
CCtr Categories: *

Allocation default values
ATyp category: 1 Manual entry, manual allocation
Allocation cost elem: 94301000 Internal act. alloc.
Price indicator: 3 Determined manually
☐ Actual qty set ☐ Average price

CIVITAS Civitas Cost Elements

- CV-PRIM Civitas Primary Costs
 - 63003000 Maintenance and Repairs
 - 63004000 Insurance
 - 64001000 Imputed Depreciation
 - 63009000 Minor Assets
 - 63001000 Electricity and other Utilities
 - 63002000 Heating
 - 61062000 Salaries
 - 61063000 Statutory Social Security
- CV-SEC Civitas Secondary Costs
 - 94301000 Internal Activity Allocation
 - 94201000 Assessment Maintenance
 - 94202000 Assessment Building

Cost Accounting



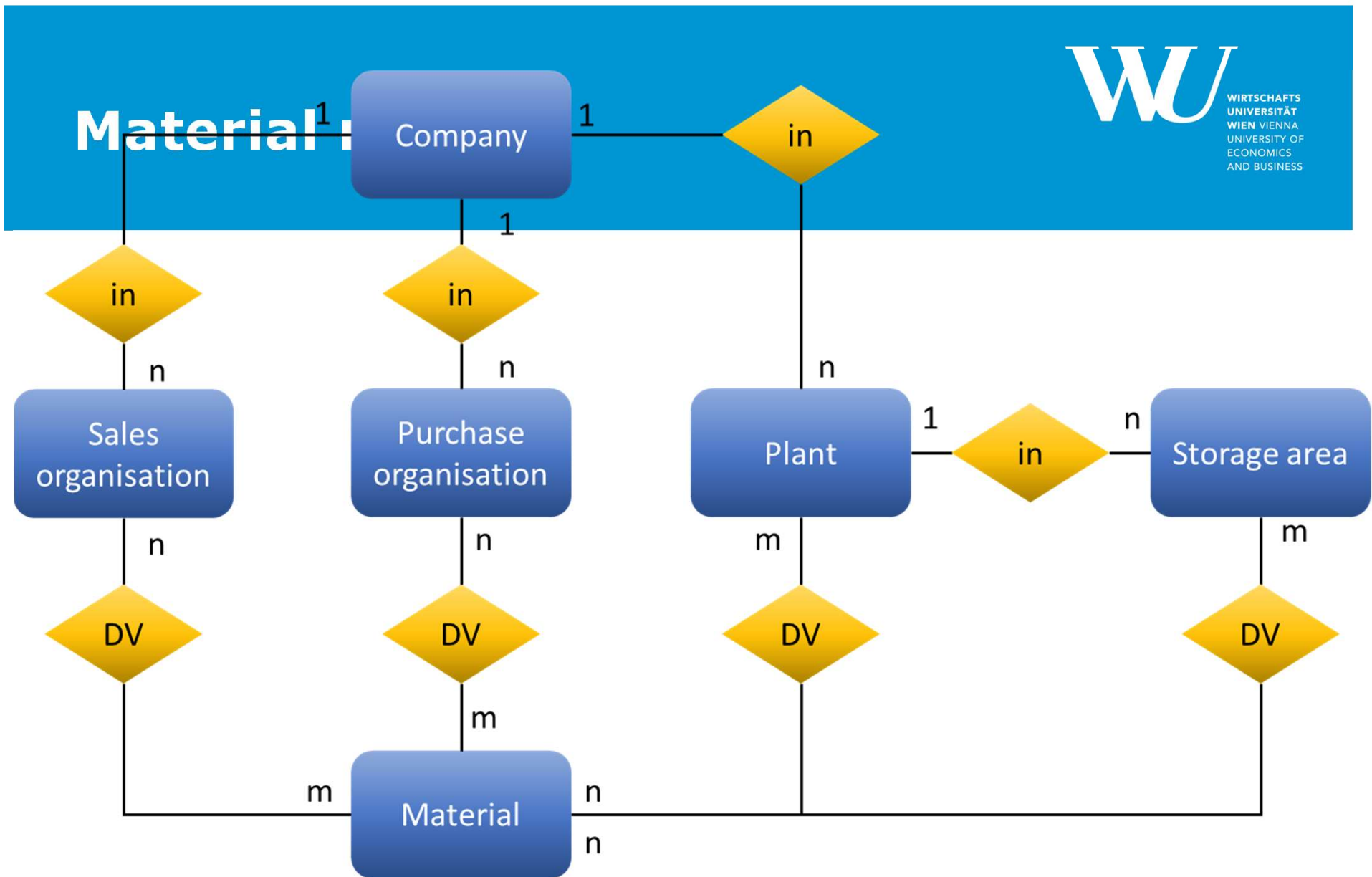
The materials

Broom, high-visibility jacket, garbage bags

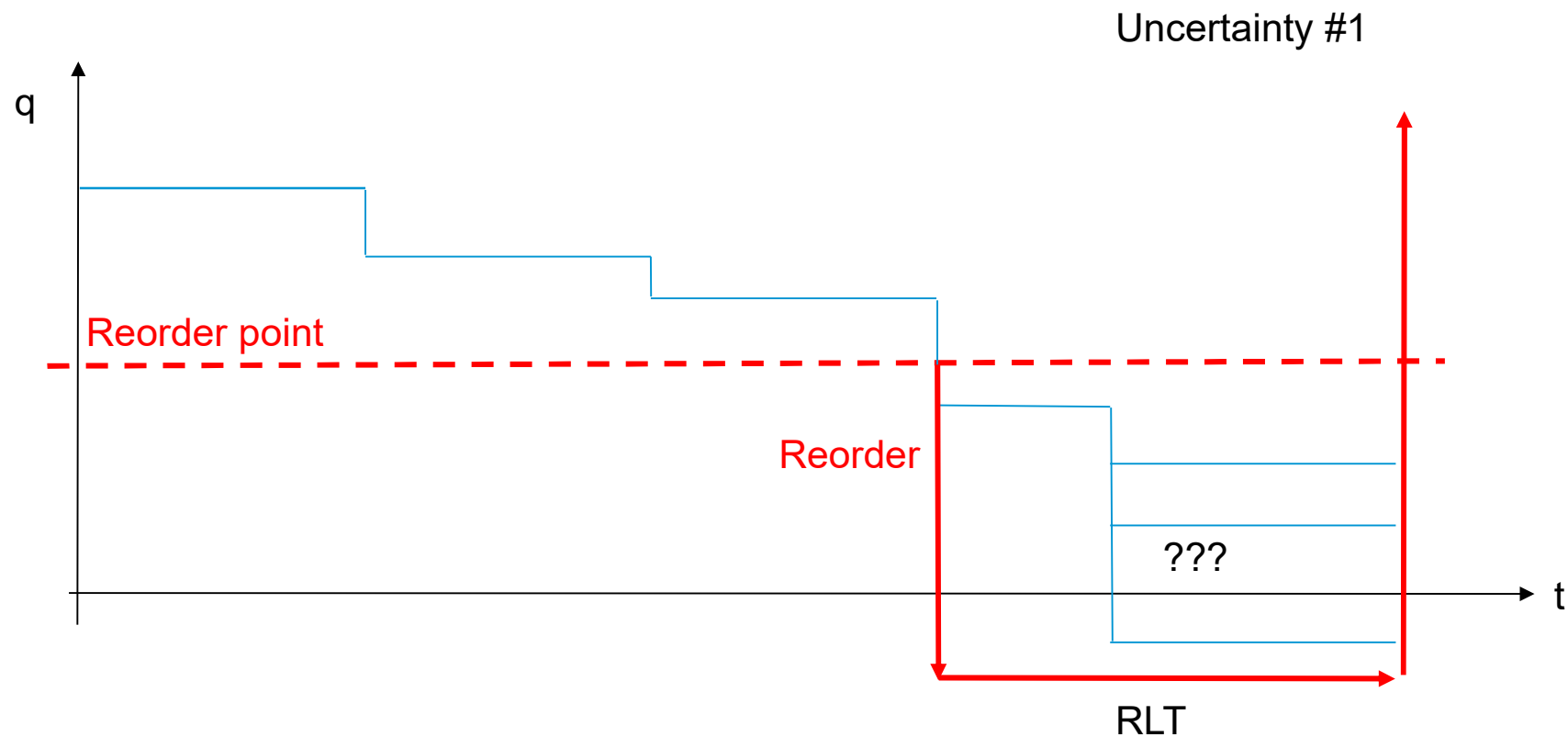
Rotating brush

Fuel, water

Tab	Organisational Unit/s
Basic Data	Material only
Classification	Material only
Sales/Export	Sales organisation/Distribution channel
Purchasing/Import	Plant
MRP	Plant/Storage location
Forecasting	Plant
General plant data/Storage	Plant/Storage location
Warehouse management	Plant (plus warehouse references not used in this case study)
Quality management	Plant
Accounting/Costing	Plant



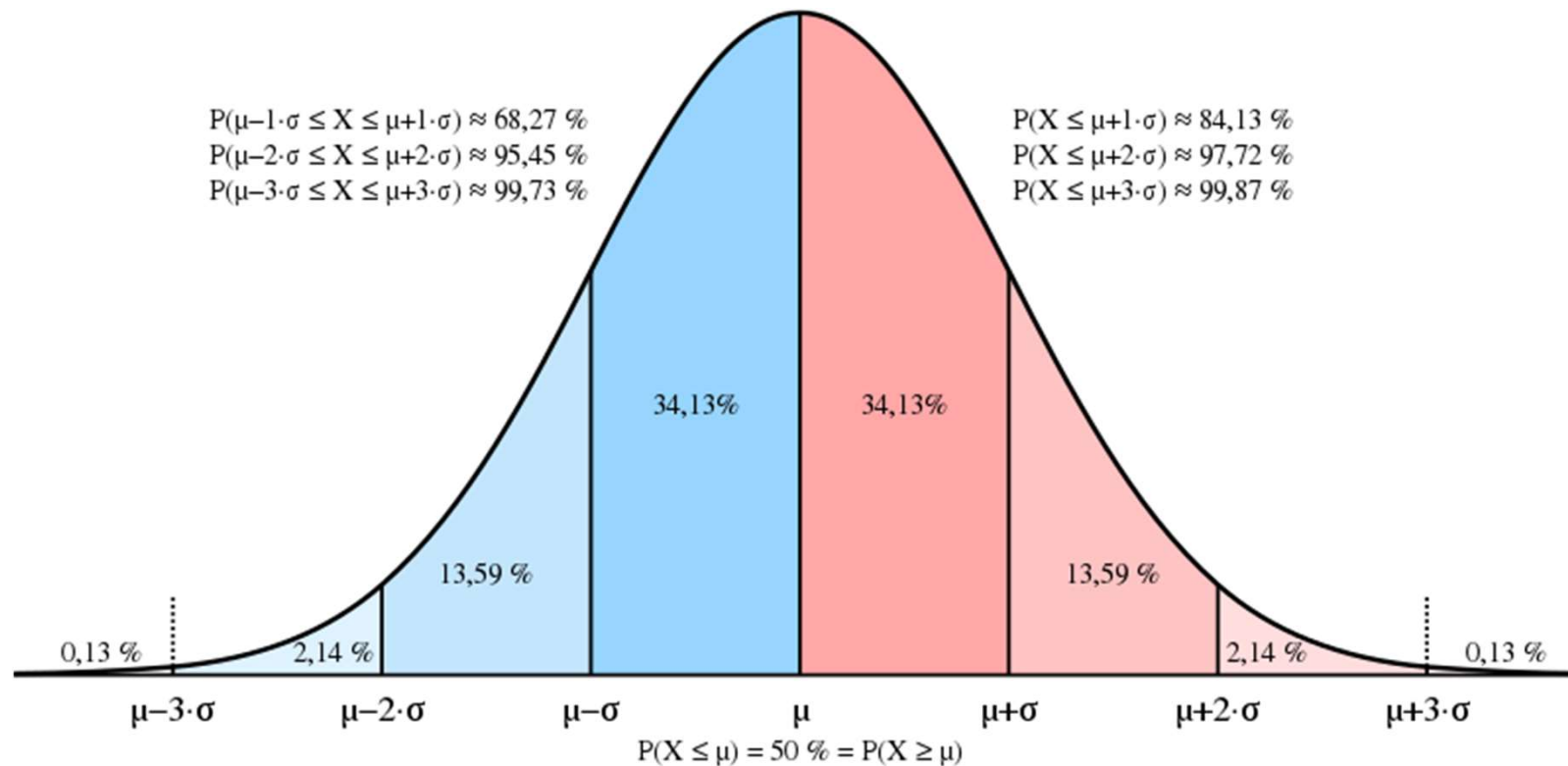
Consumption-based planning



WU
WIRTSCHAFTS
UNIVERSITÄT
WIEN VIENNA
UNIVERSITY OF
ECONOMICS
AND BUSINESS

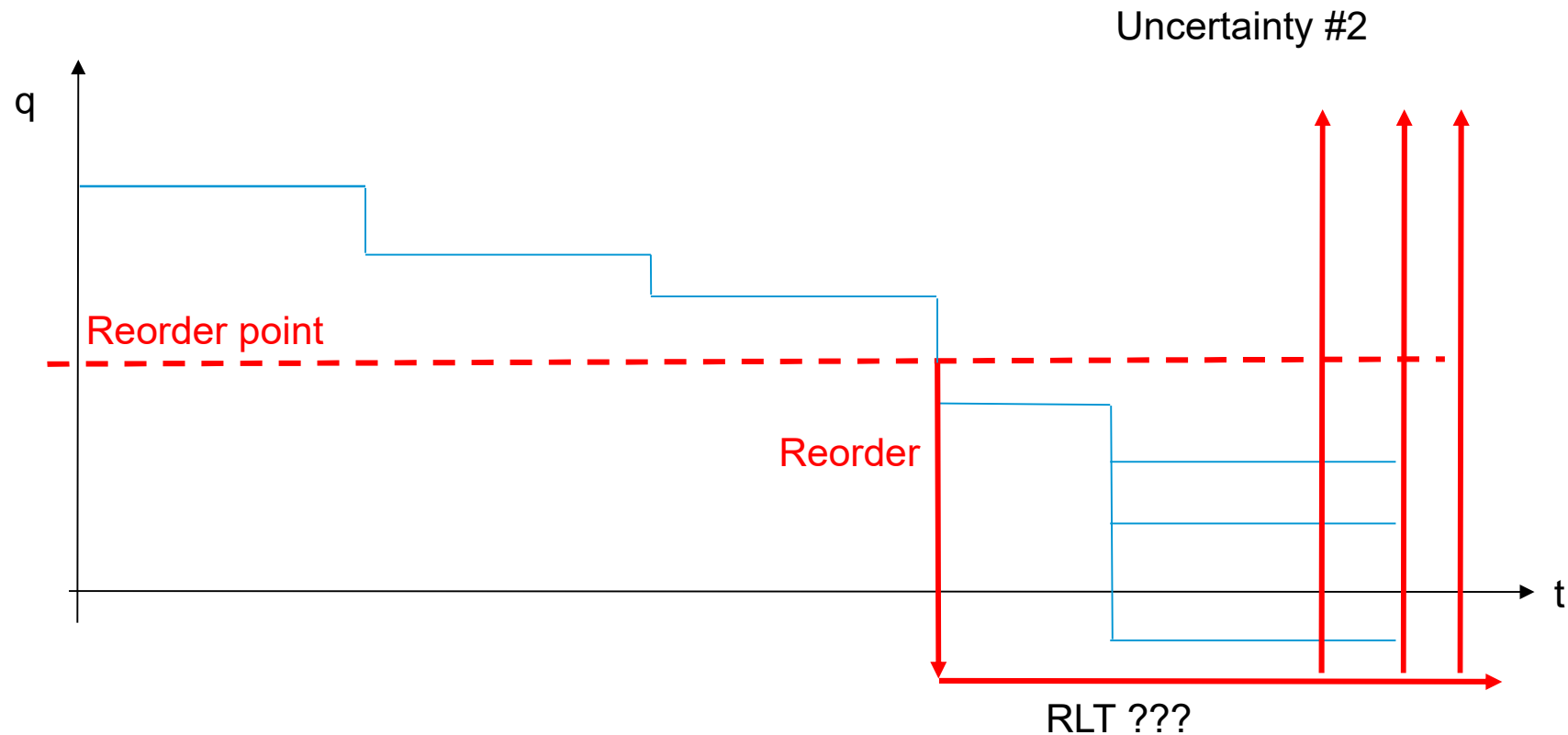


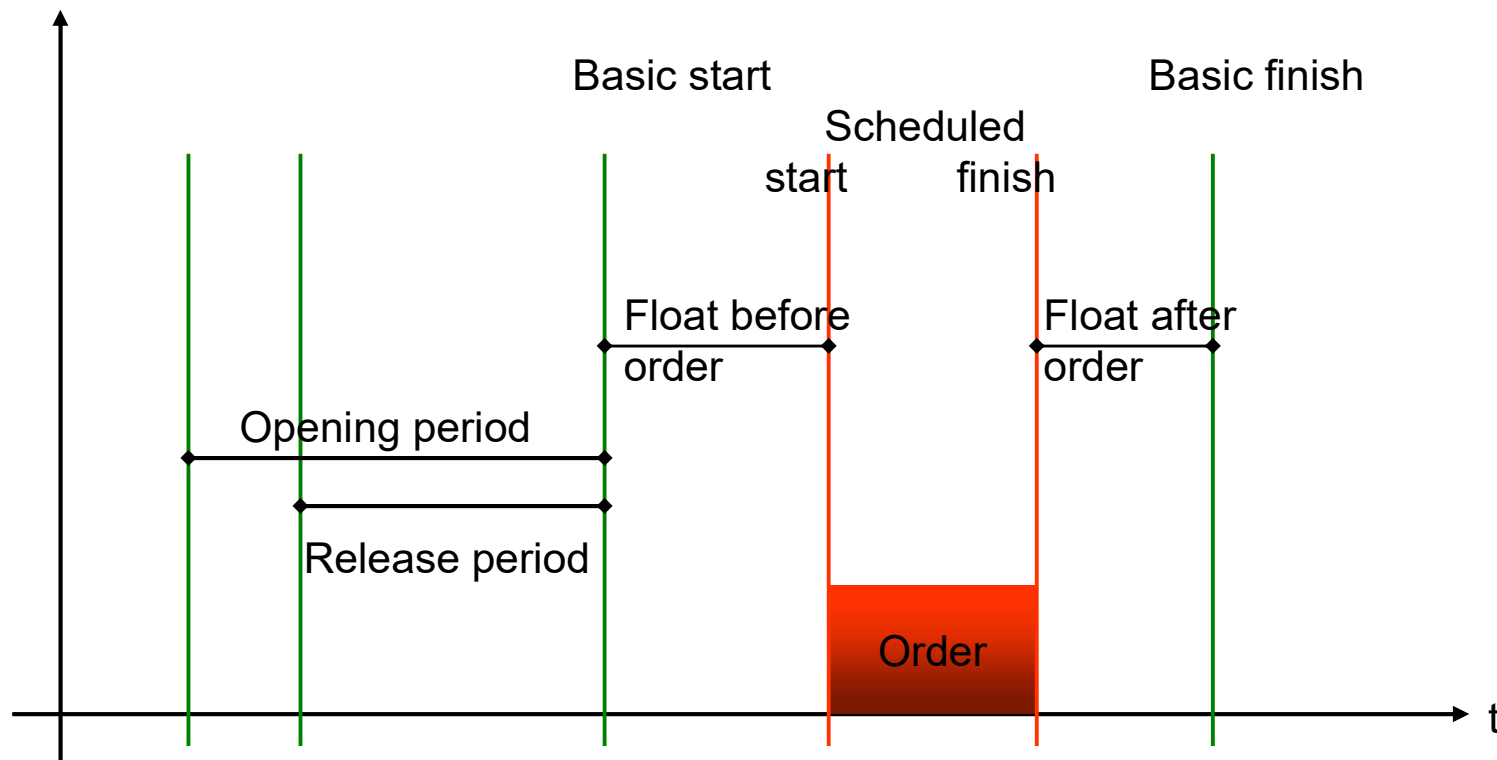
Consumption-based planning



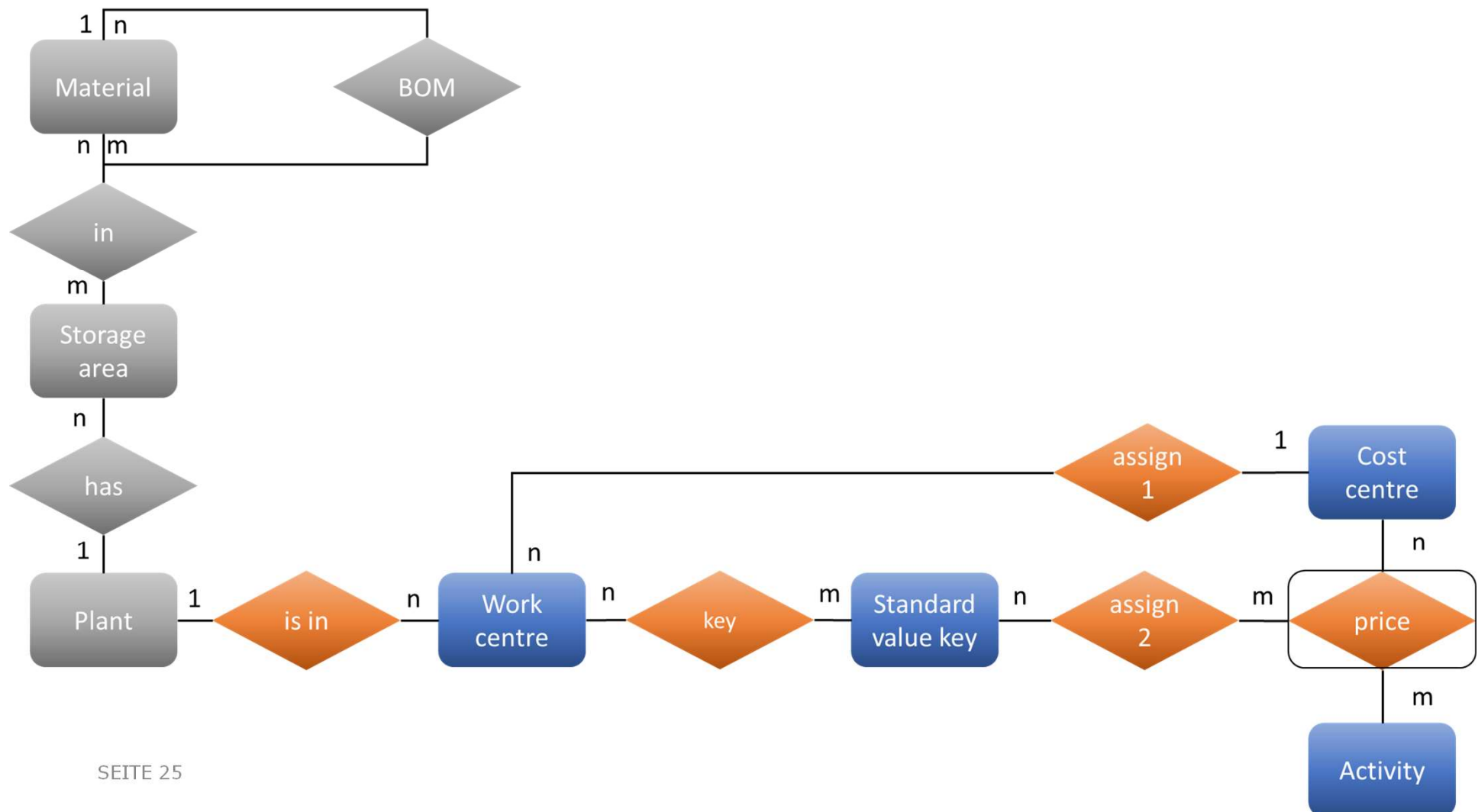
Source: https://commons.wikimedia.org/wiki/File:Normal_Distribution_Sigma.svg, Creative Commons

Consumption-based planning

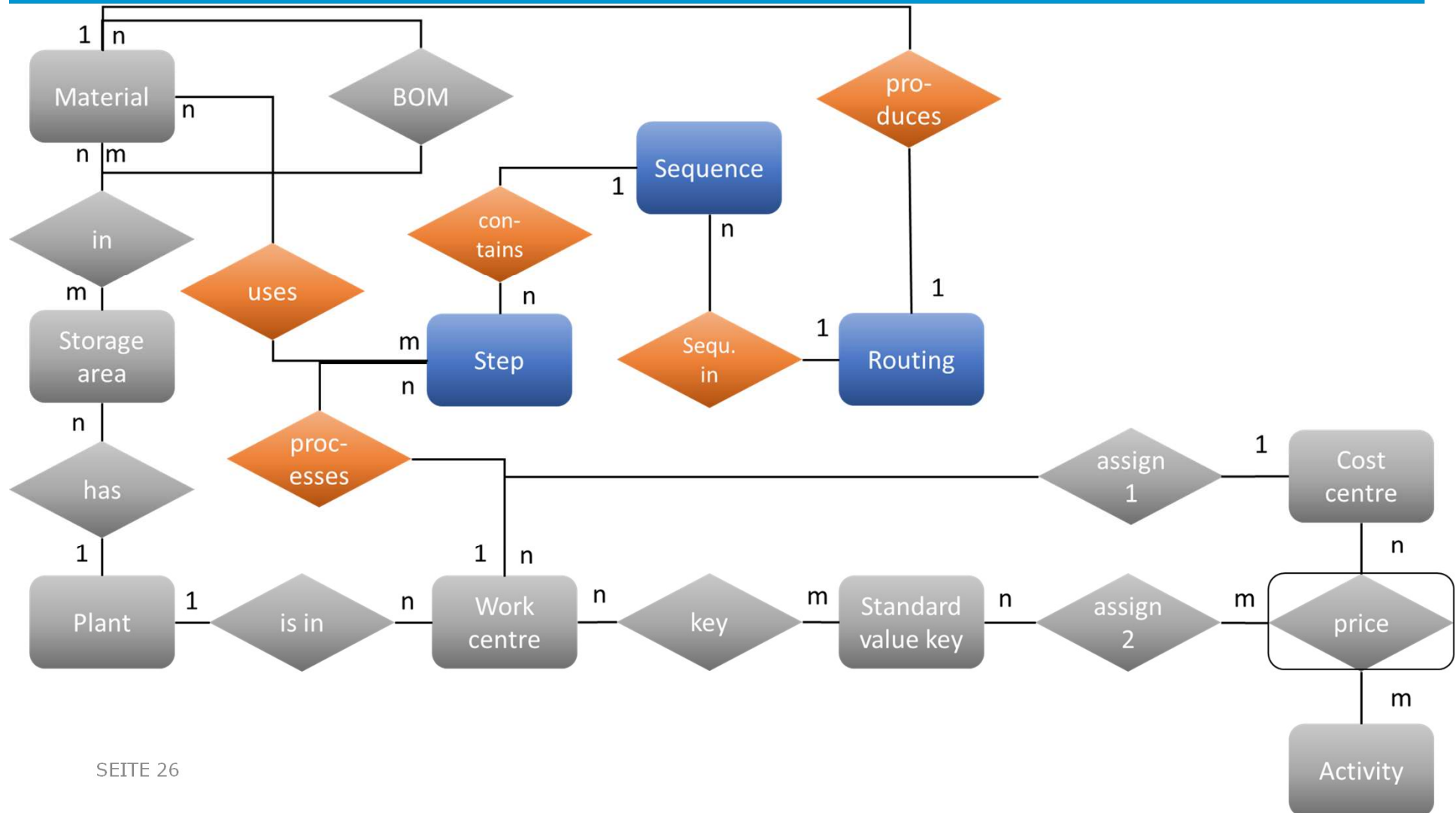




MRP



MRP



Procurement

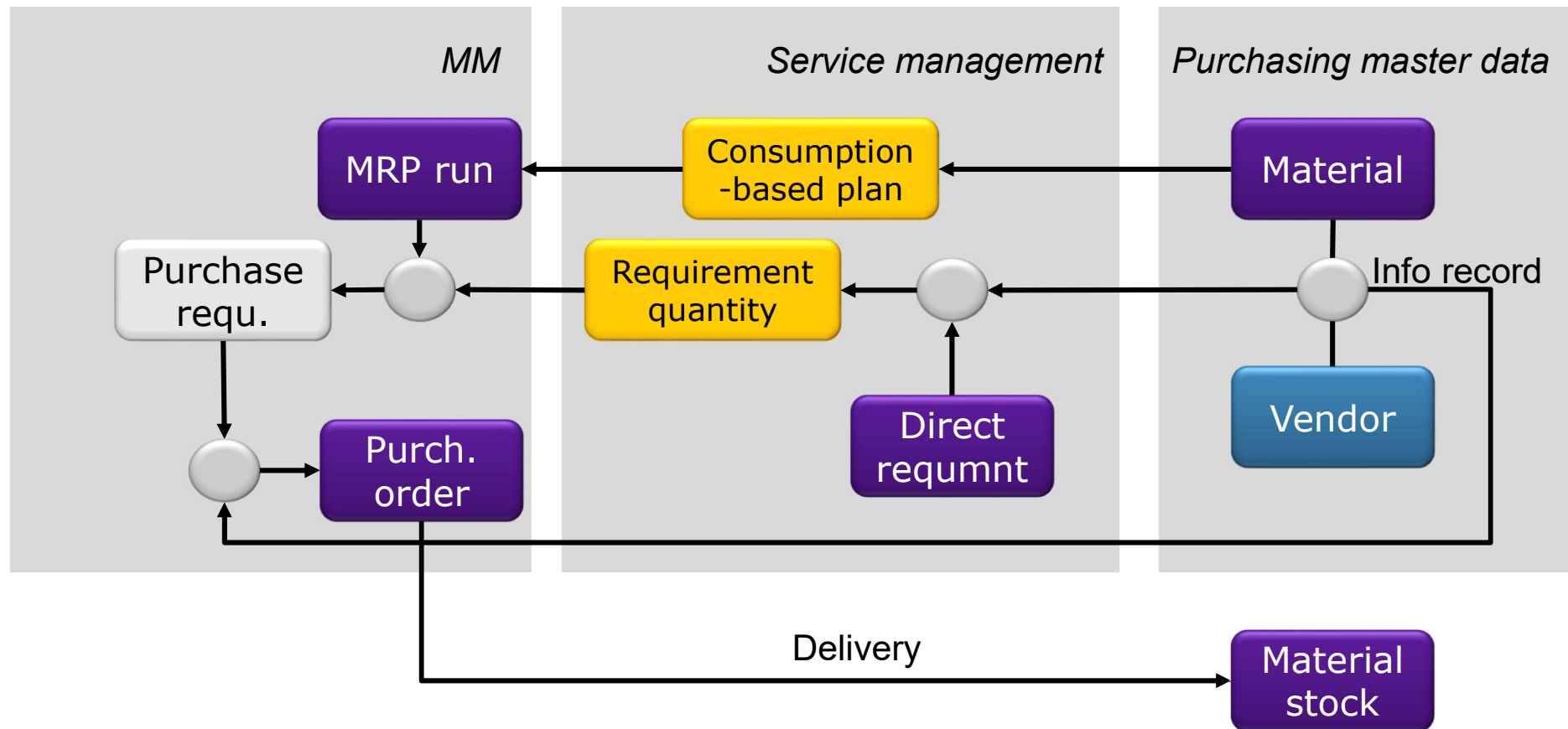
Municipii Supplementum: Broom, jacket, garbage bags, rotating brush

Carrum: Rotating brush (original manufacturer)

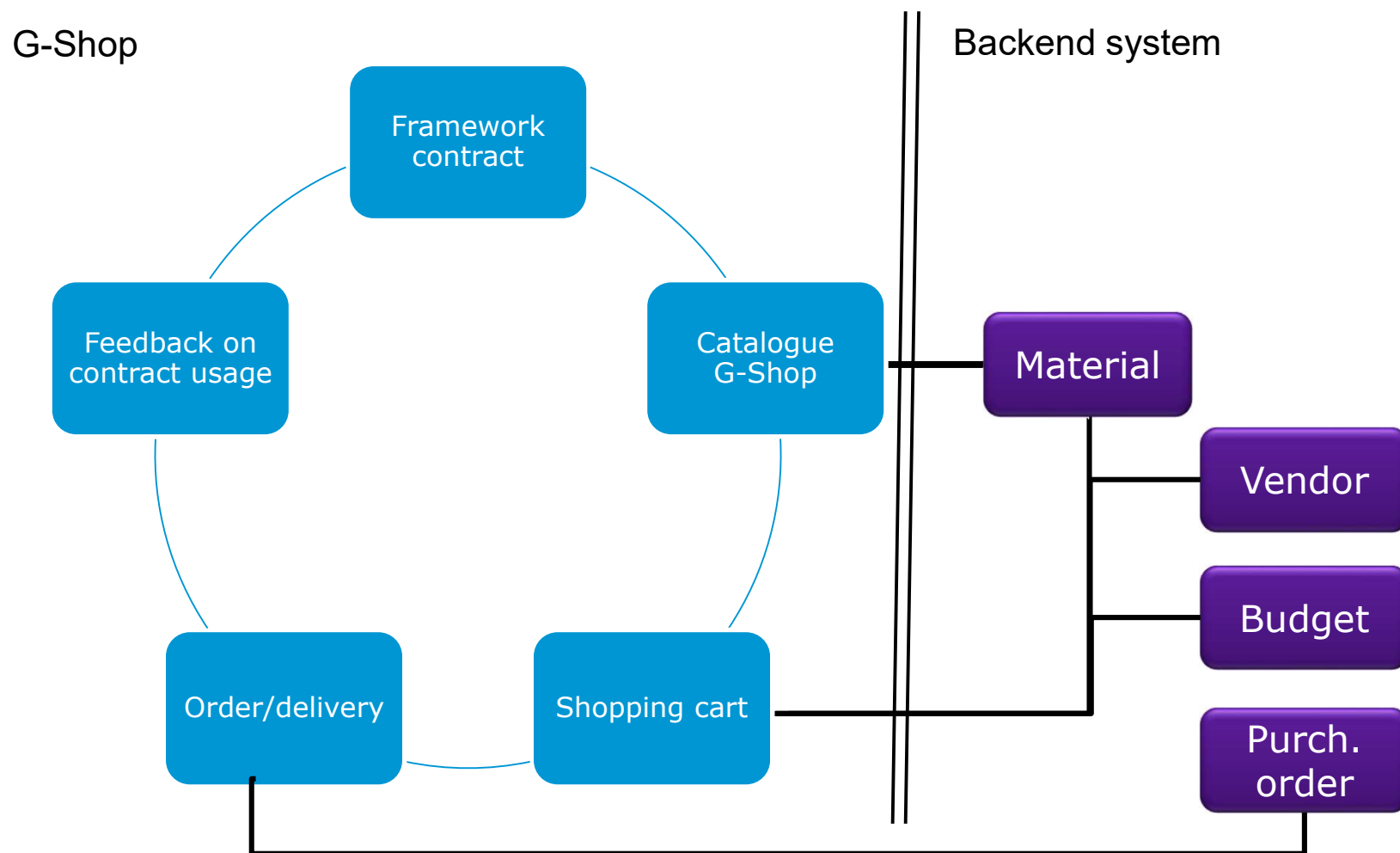
Crassus Olea: Fuel

Civitas Waterworks: Water

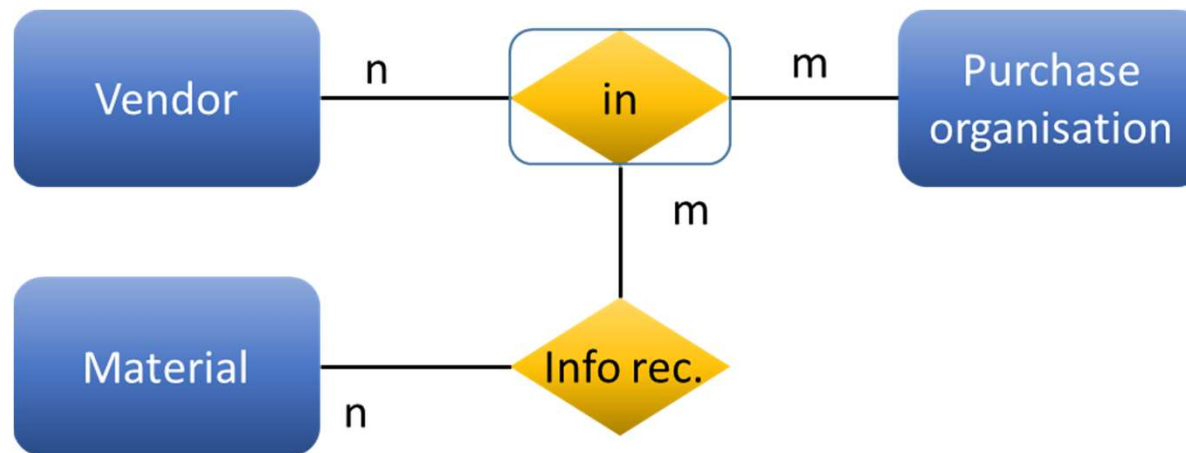
Procurement



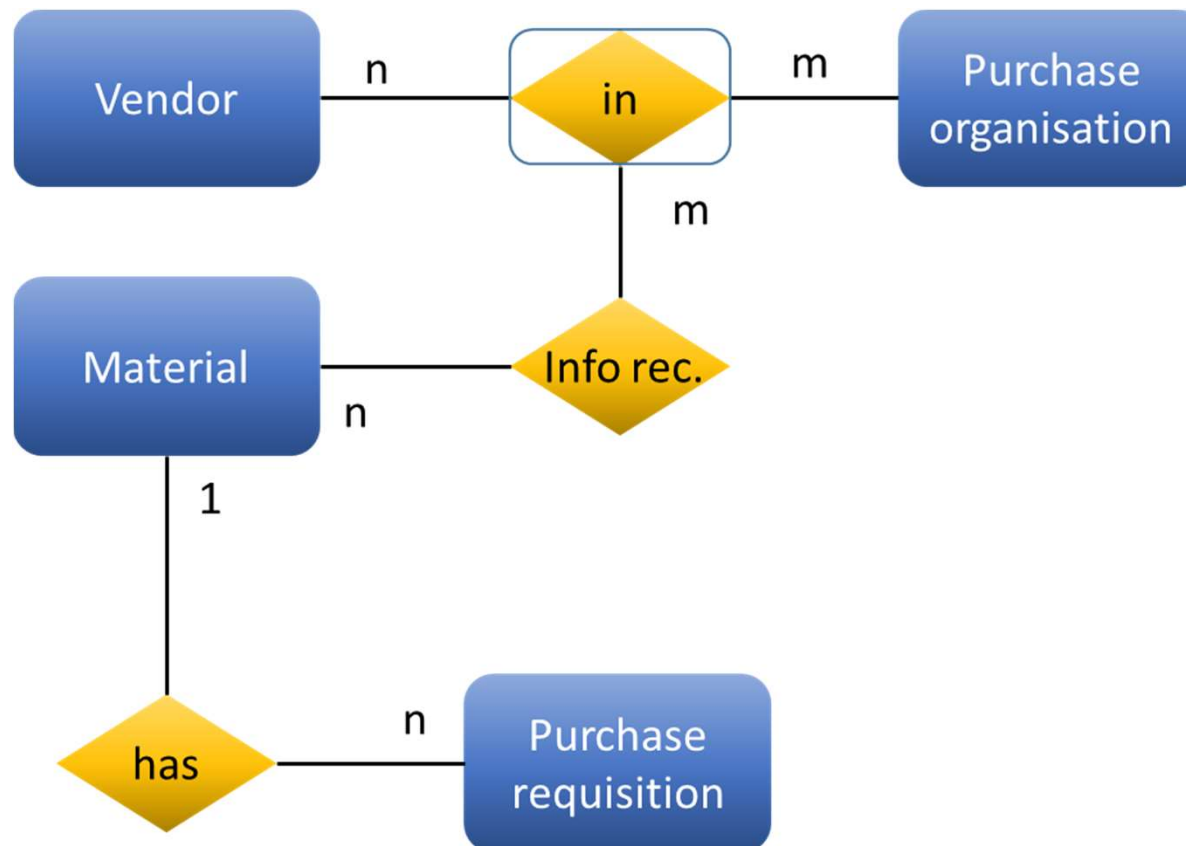
Procurement (G-Shop)



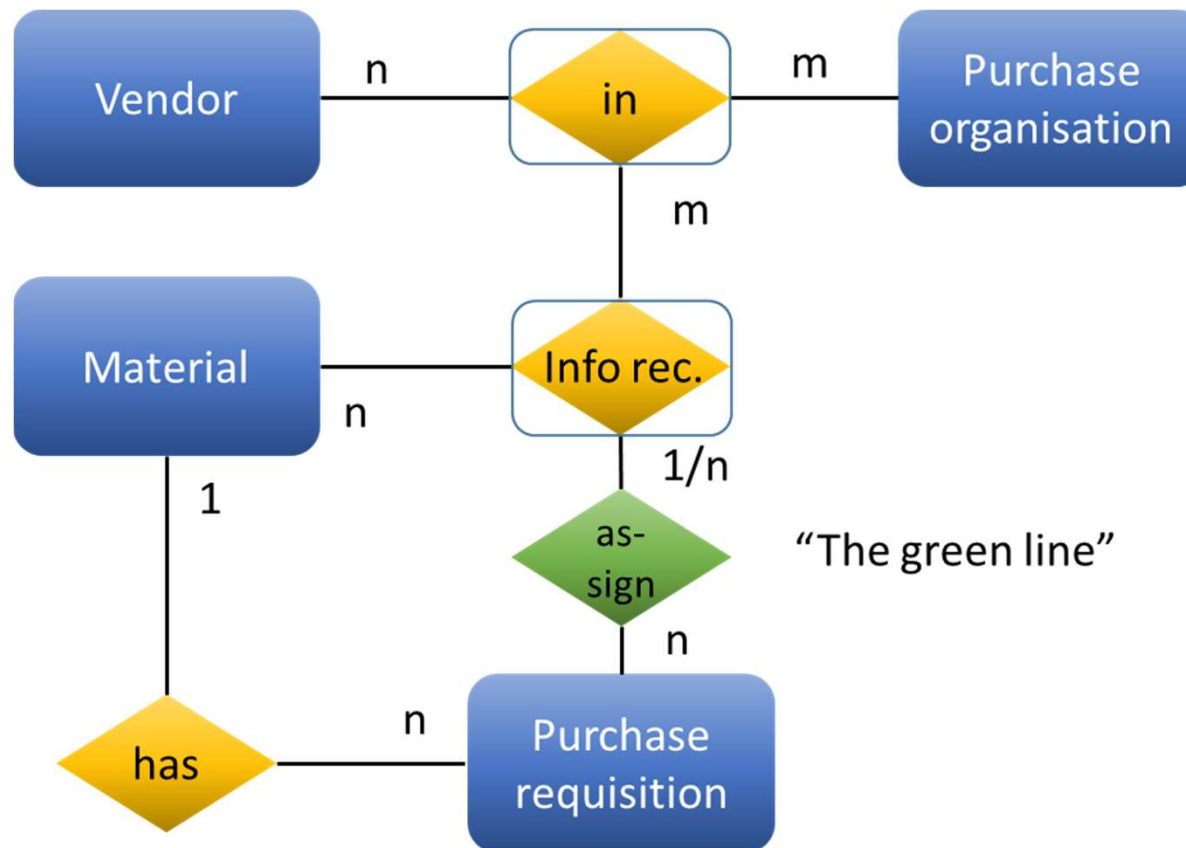
Procurement



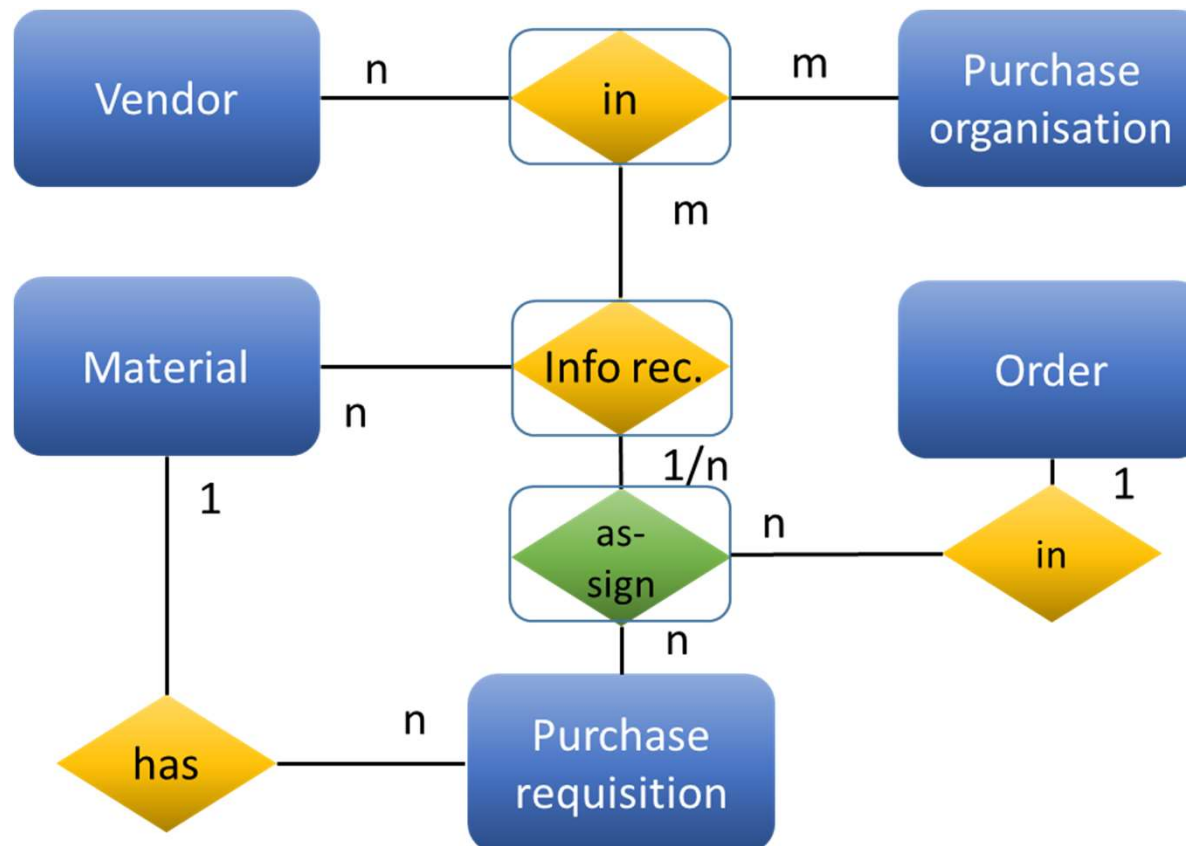
Procurement



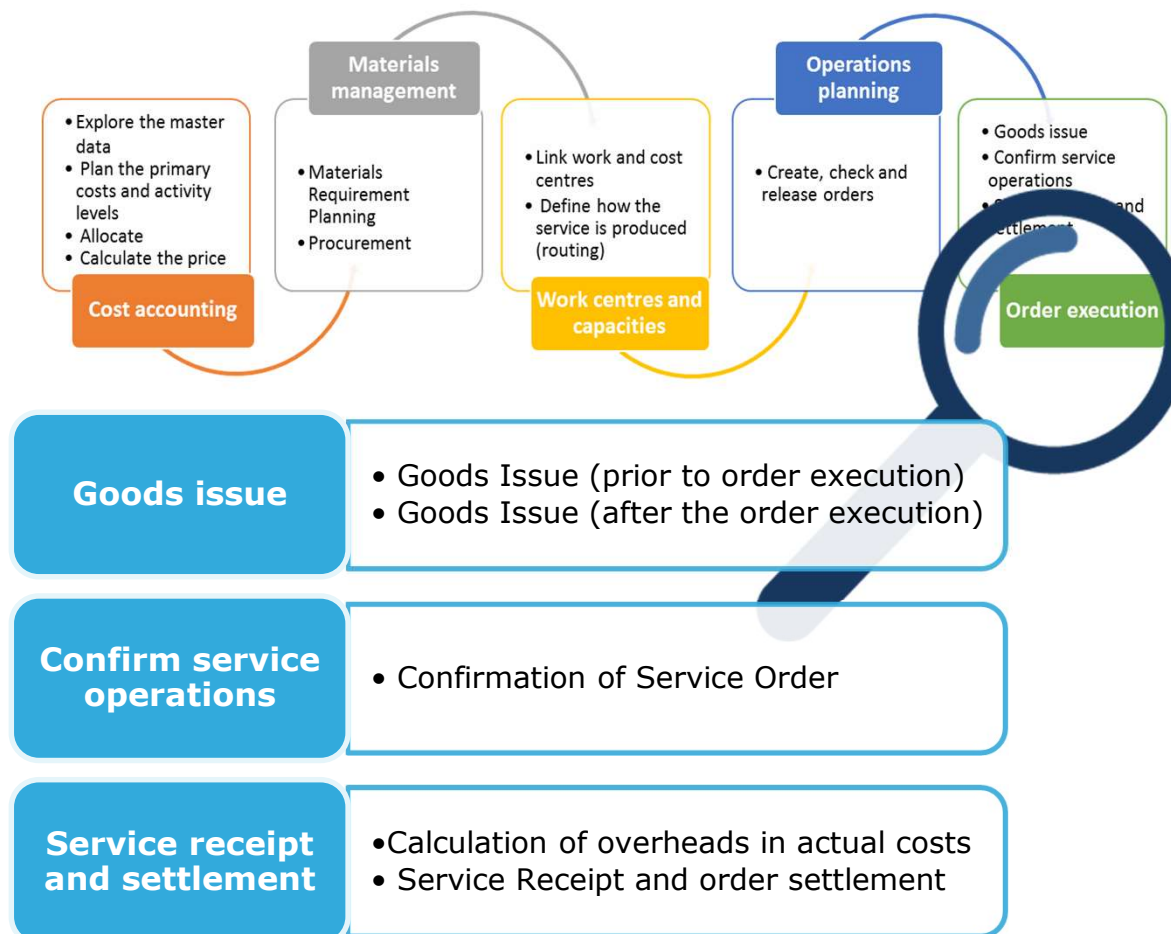
Procurement



Procurement



Overview



Overview

Order Functions Edit Goto Header Environment System Help

Production order Display: Header

Order: 1000020 Type: PP01
Material: 71 CV01-StreetCleaning Plant: CV01
Status: CRTD PRC MACM SETC

General Assignment Goods receipt Control data Dates/qrys Master data Long text Administration

Quantities

Total Qty	2.800	M	Scrap portion	0	0,00 %
Delivered	0		ExpectYieldVar	0	

Dates

	BasicDates		Scheduled		Confirmed
Finish	31.08.2017	24:00	30.08.2017	15:49	
Start	28.08.2017	00:00	30.08.2017	08:00	00:00
Release			23.08.2017		

Scheduling

Type	Forwards
Reduction	No reduction carried out
Note	No scheduling note
Priority	

Floats

Scheduling margin	
Float bef. prod	2 Workdays
Float after pro.	1 Workdays
Release period	5 Workdays

SAP | 333 | SAP201302 | OVR

Operational process

Overview

The screenshot displays the SAP 'Display Material 57 (Raw materials)' interface. The material is 'v01-rotating brush for truck' at Plant 'CV01'. The interface is divided into three main sections: General Data, MRP procedure, and Lot size data.

General Data			
Base Unit of Measure	ST	items	MRP group
Purchasing Group	001		ABC Indicator
Plant-sp.matl status			Valid from

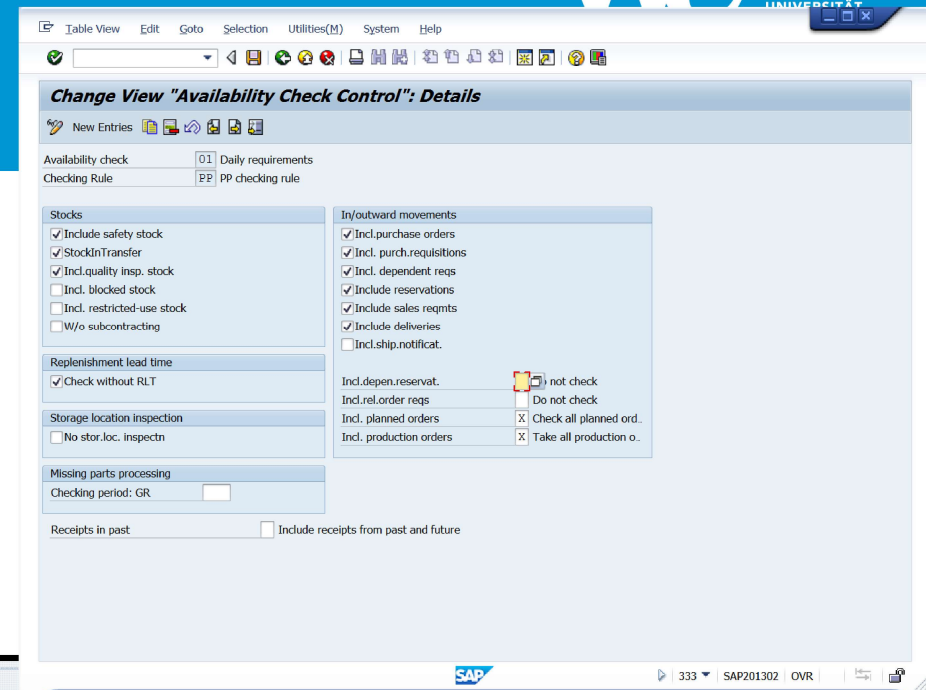
MRP procedure			
MRP Type	PD	MRP	
Reorder Point	0	Planning time fence	0
Planning cycle		MRP Controller	002

Lot size data			
Lot size	EX	Lot-for-lot order quantity	
Minimum Lot Size	0	Maximum Lot Size	0
Assembly scrap (%)	0,00	Maximum stock level	0
Rounding Profile		Takt time	0
Unit of Measure Grp		Rounding value	0

Master data

Operational process

Overview



The screenshot shows the SAP 'Change View "Availability Check Control": Details' interface. It features a menu bar at the top with options like 'Table View', 'Edit', 'Goto', 'Selection', 'Utilities(M)', 'System', and 'Help'. Below the menu is a toolbar with various icons. The main content area is divided into several sections:

- Availability check**: Includes 'Daily requirements' and 'PP checking rule'.
- Stocks**: Contains checkboxes for 'Include safety stock', 'StockInTransfer', 'Incl. quality insp. stock', 'Incl. blocked stock', 'Incl. restricted-use stock', and 'W/o subcontracting'.
- Replenishment lead time**: Includes 'Check without RLT'.
- Storage location inspection**: Includes 'No stor. loc. inspectn'.
- Missing parts processing**: Includes 'Checking period: GR'.
- In/outward movements**: Contains checkboxes for 'Incl. purchase orders', 'Incl. purch. requisitions', 'Incl. dependent reqs', 'Include reservations', 'Include sales reqmts', 'Include deliveries', and 'Incl. ship. notificat.'.
- Receipts in past**: Includes 'Include receipts from past and future'.

The bottom status bar shows 'SAP' logo, '333', 'SAP201302', 'OVR', and a printer icon.

Customizing

Master data

Operational process

Overview

Planning

Implementation

