

# Facts & Figures



# Key Data

---

## 2015/16

### Students

Total students (fall 2014)	23,313 (47% women)
International students (fall 2014)	6,386 (27% of total)
Incoming exchange students	~ 1,000 per year
Outgoing exchange students	~ 1,000 per year

### Faculty and Staff (2014 in full-time equivalents)

Total faculty*	491 (43% women)
Administrative staff	507 (69% women)
Total	1,152 (55% women)

### Resources

Budget (2015)	~ € 150 million
Premises Campus WU	100,000 m <sup>2</sup>

### Premises Library

Total floor space	18,100 m <sup>2</sup>
Volumes	633,680
Printed journals	957
Electronic journals	22,861
Study places	1,680
Visitors	913,693

### International

Partner universities	~ 240
International Summer Universities	10/year
Courses in English	~ 150/semester

---

\* not including personnel funded by third parties

# International Recognition

## FINANCIAL TIMES RANKINGS 2015/16

- › **Masters in Management Ranking 2016**  
WU's "Master in International Management" program  
› Overall rank: 8th out of 90 programs
- › **European Business Schools Ranking 2015**  
› Overall Rank: 43rd out of 85 European business schools
- › **Executive MBA Ranking 2015**  
WU Executive Academy's Global Executive MBA  
› Overall Rank: 44th out of 100 programs

## HANDELSBLATT-RANKING 2015

- › The German business daily Handelsblatt publishes an annual ranking of economics departments, business school professors and most productive research institutions in Germany, Austria and Switzerland.  
› Overall Rank: 13th

### ACCREDITED BY



### INTERNATIONAL MEMBERSHIPS



# Funding

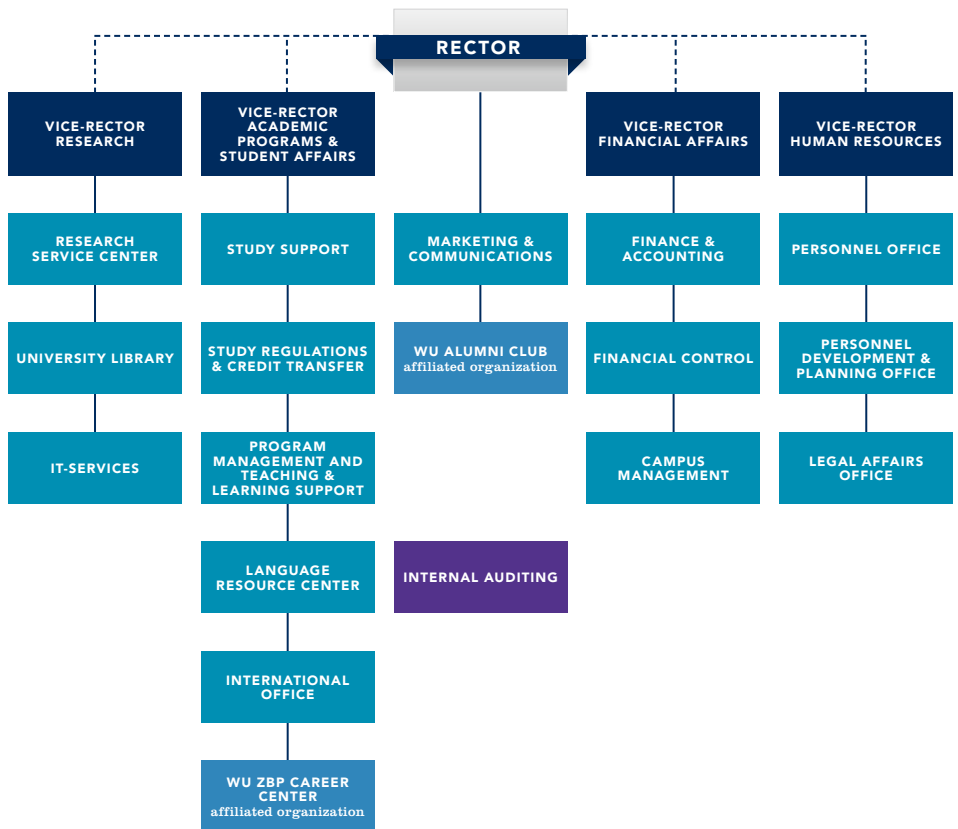
---

## FUNDING 2015

Revenues (in million EUR)	2015	2015 in %
Federal Ministry of Science and Research	97.8	65.0
Tuition fees (including State Compensation for Tuition fees)	18.2	12.0
Research funding for projects	6.9	4.6
Other income and overheads	7.4	4.9
Executive education	9.7	6.4
Research grants	10.0	6.8
Financial income	0.5	0.3
<b>Total</b>	<b>150.5</b>	<b>100.0</b>
Expenses (in million EUR)		
Personnel	-91.6	61.9
Operating charges	-42.7	28.8
Depreciation	-13.2	8.9
Costs of goods and services	-0.5	0.3
Taxes	-0.2	0.1
<b>Total</b>	<b>-148.2</b>	<b>100.0</b>

---

# Organization



# Academic Units

---

## WU'S DEPARTMENTS

Department of Business, Employment and Social Security Law	<a href="http://wu.ac.at/en/businesslaw">wu.ac.at/en/businesslaw</a>
Department of Economics	<a href="http://wu.ac.at/en/economics">wu.ac.at/en/economics</a>
Department of Finance, Accounting and Statistics	<a href="http://wu.ac.at/en/fas">wu.ac.at/en/fas</a>
Department of Foreign Language Business Communication	<a href="http://wu.ac.at/en/bizcomm">wu.ac.at/en/bizcomm</a>
Department of Global Business and Trade	<a href="http://wu.ac.at/en/welthandel">wu.ac.at/en/welthandel</a>
Department of Information Systems and Operations	<a href="http://wu.ac.at/en/ipm">wu.ac.at/en/ipm</a>
Department of Management	<a href="http://wu.ac.at/en/management">wu.ac.at/en/management</a> (website in German)
Department of Marketing	<a href="http://wu.ac.at/en/marketing">wu.ac.at/en/marketing</a>
Department of Public Law and Tax Law	<a href="http://wu.ac.at/en/publicandtaxlaw">wu.ac.at/en/publicandtaxlaw</a>
Department of Socioeconomics	<a href="http://wu.ac.at/en/soziooekonomie-neu">wu.ac.at/en/soziooekonomie-neu</a> (website in German)
Department of Strategy and Innovation	<a href="http://wu.ac.at/en/strategy-and-innovation">wu.ac.at/en/strategy-and-innovation</a>

## WU'S COMPETENCE CENTERS

Center for Central and Eastern Europe (CEE)	<a href="http://wu.ac.at/en/emcee">wu.ac.at/en/emcee</a>
Center for Empirical Research Methods	<a href="http://wu.ac.at/en/methods">wu.ac.at/en/methods</a>
Center for Non-profit Organizations and Social Entrepreneurship	<a href="http://wu.ac.at/en/npocompetence">wu.ac.at/en/npocompetence</a>
Center for Sustainability	<a href="http://wu.ac.at/en/sustainabilitycenter">wu.ac.at/en/sustainabilitycenter</a>
Entrepreneurship Center	<a href="http://wu.ac.at/en/startingup">wu.ac.at/en/startingup</a>

---

---

<b>WU'S RESEARCH INSTITUTES</b>	
<b>CEE Legal Studies</b>	<a href="http://wu.ac.at/fowi">wu.ac.at/fowi</a> (website in German)
<b>Computational Methods</b>	<a href="http://wu.ac.at/en/firm">wu.ac.at/en/firm</a>
<b>Co-Operation and Co-Operatives</b>	<a href="http://wu.ac.at/ricc">wu.ac.at/ricc</a> (website in German)
<b>Economics of Aging</b>	<a href="http://wu.ac.at/en/altersoekonomie">wu.ac.at/en/altersoekonomie</a>
<b>Economics of Inequality</b>	<a href="http://wu.ac.at/en/ineq">wu.ac.at/en/ineq</a>
<b>European Affairs</b>	<a href="http://wu.ac.at/en/europainstitut">wu.ac.at/en/europainstitut</a>
<b>Family Businesses</b>	<a href="http://wu.ac.at/en/research-institute-for-family-business">wu.ac.at/en/research-institute-for-family-business</a>
<b>Health Care Management and Economics</b>	<a href="http://wu.ac.at/healthcare">wu.ac.at/healthcare</a>
<b>Human Capital and Development</b>	<a href="http://wu.ac.at/en/humancapital">wu.ac.at/en/humancapital</a>
<b>International Taxation</b>	
<b>Liberal Professions</b>	<a href="http://wu.ac.at/en/forschungsinstitut-fuer-freie-berufe">wu.ac.at/en/forschungsinstitut-fuer-freie-berufe</a> (website in German)
<b>Regulatory Economics</b>	<a href="http://wu.ac.at/en/regulation">wu.ac.at/en/regulation</a>
<b>Research on Capital Markets</b>	<a href="http://wu.ac.at/en/isk">wu.ac.at/en/isk</a>
<b>Spatial and Real Estate Economics</b>	<a href="http://wu.ac.at/en/immobilienwirtschaft">wu.ac.at/en/immobilienwirtschaft</a>
<b>Supply Chain Management</b>	<a href="http://wu.ac.at/en/scm">wu.ac.at/en/scm</a>
<b>Urban Management and Governance</b>	<a href="http://wu.ac.at/en/urban">wu.ac.at/en/urban</a>

---

# Programs

## WU'S DEGREE PROGRAMS

<b>BACHELOR PROGRAMS</b>	<ul style="list-style-type: none"> <li>› <b>Business, Economics and Social Sciences</b> (BSc WU) four majors:               <ul style="list-style-type: none"> <li>› Business Administration</li> <li>› International Business Administration</li> <li>› Economics and Socioeconomics</li> <li>› Information Systems</li> </ul> </li> </ul>	<ul style="list-style-type: none"> <li>› <b>Business Law</b> (LL.B. WU)</li> </ul>
<b>MASTER/LL.M. PROGRAMS</b>	<ul style="list-style-type: none"> <li>› <b>Business Education</b> (MSc WU)</li> <li>› <b>Economics</b> (MSc WU)</li> <li>› <b>Export and Internationalization Management</b> (MSc WU)</li> <li>› <b>Finance and Accounting</b> (MSc WU)</li> <li>› <b>Management</b> (MSc WU)</li> <li>› <b>Socioeconomics</b> (MSc WU)</li> <li>› <b>Taxation and Accounting</b> (MSc WU)</li> </ul> <hr/> <ul style="list-style-type: none"> <li>› <b>Information Systems</b> (MSc WU), English</li> <li>› <b>International Management/CEMS</b> (MSc WU &amp; CEMS MIM), English</li> <li>› <b>Marketing</b> (MSc WU), English</li> <li>› <b>Quantitative Finance</b> (MSc WU), English</li> <li>› <b>Socio-Ecological Economics and Policy</b> (MSc WU), English</li> <li>› <b>Strategy, Innovation, and Management Control</b> (MSc WU), English</li> <li>› <b>Supply Chain Management</b> (MSc WU), English</li> </ul>	<ul style="list-style-type: none"> <li>› <b>Business Law</b> (LL.M. WU)</li> </ul>
<b>DOCTORAL/PHD PROGRAMS</b>	<ul style="list-style-type: none"> <li>› <b>Social and Economic Sciences</b> (Dr. rer. soc. oec.)</li> <li>› <b>PhD Program in Economics and Social Sciences</b> (PhD), German with English tracks (intended mainly for WU's academic staff)</li> </ul> <hr/> <ul style="list-style-type: none"> <li>› <b>PhD in Finance</b> (PhD), English</li> <li>› <b>PhD in International Business Taxation</b> (PhD), English</li> </ul>	<ul style="list-style-type: none"> <li>› <b>Business Law</b> (Dr. iur.)</li> </ul>



## WU EXECUTIVE ACADEMY PROGRAM PORTFOLIO

<b>MBA/MASTER OF LAWS PROGRAMS</b>	<ul style="list-style-type: none"> <li>› Global Executive MBA</li> <li>› Executive MBA Bucharest</li> <li>› Executive MBA PGM</li> <li>› Professional MBA with industry or functional specialization options</li> <li>› Energy Management</li> <li>› Entrepreneurship &amp; Innovation</li> <li>› Finance</li> <li>› Health Care Management</li> <li>› Marketing &amp; Sales</li> <li>› Performance Management</li> <li>› Project Management</li> <li>› Public Auditing</li> </ul>	<ul style="list-style-type: none"> <li>› Master of Laws (International Tax Law)</li> <li>› Master of Business Law (Corporate Law)</li> <li>› Master of Legal Studies</li> <li>› NEW: Master of Legal Studies (European Business Law)</li> </ul>
<b>CERTIFICATE PROGRAMS</b>	<ul style="list-style-type: none"> <li>› Health Care Management</li> <li>› Logistics &amp; Supply Chain Management</li> <li>› Marketing &amp; Sales</li> <li>› Post Graduate Management (PGM)</li> <li>› Risk &amp; Insurance Management</li> <li>› Social Management</li> <li>› Tourism &amp; Event Management</li> </ul>	
<b>BBA DIPLOM BETRIEBSWIRTSCHAFTSWISSENSCHAFT</b>	<ul style="list-style-type: none"> <li>› Logistics &amp; Supply Chain Management</li> <li>› Marketing &amp; Sales</li> <li>› Risk &amp; Insurance Management</li> <li>› Tourism &amp; Event Management</li> </ul>	
<b>CORPORATE PROGRAMS AND OPEN PROGRAMS</b>	<b>Corporate Programs</b> <ul style="list-style-type: none"> <li>› In-house MBA<sup>WU</sup></li> <li>› Leadership Academy<sup>WU</sup></li> <li>› Management Development Program<sup>WU</sup></li> <li>› Compact Course<sup>WU</sup></li> <li>› Executive/Expert Lounge<sup>WU</sup></li> <li>› Special Workshops<sup>WU</sup></li> <li>› Field Trips<sup>WU</sup></li> <li>› HR Consulting<sup>WU</sup></li> </ul>	<b>Open Programs</b> <ul style="list-style-type: none"> <li>› Business &amp; Corporate Development Strategies</li> <li>› Governance Excellence – Program for members of supervisory boards</li> <li>› Employer Brand Manager</li> </ul>

# Students

---

STUDENT ENROLLMENT	Fall 2013	Fall 2014	Fall 2015	Percent women
<b>Total students</b>	22,781	22,809	23,313	47%
degree program students	21,197	21,382	21,831	47%
international students	6,241	6,183	6,386	47%
<b>New students<sup>1</sup></b>	4,303	4,666	5,416	51%
first-time university enrollments <sup>2</sup>	3,356	3,543	4,079	50%

<sup>1</sup> "New students" refers to first-time WU students and includes both program and non-program students.

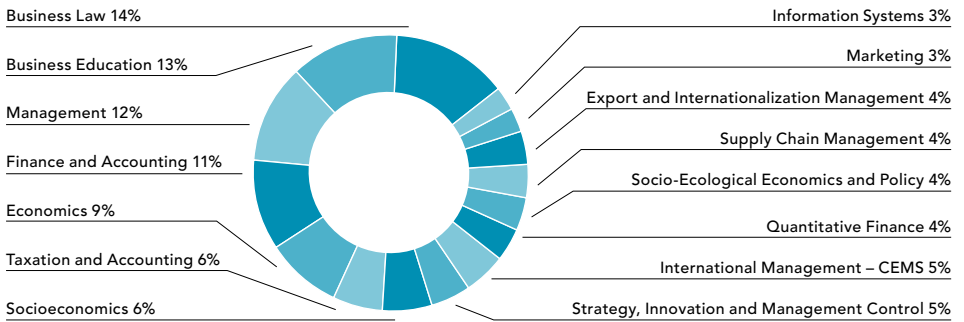
<sup>2</sup> "First-time university enrollments" refers to students enrolled in an Austrian university program for the first time, such as high school graduates, graduates of a university of applied sciences, as well as students or graduates from a foreign institution of higher education.

ENROLLMENT BY PROGRAM <sup>3</sup>	Fall 2013	Fall 2014	Fall 2015
Bachelor students	17,653	17,416	17,409
MSc students	2,548	2,939	3,342
Doctoral/PhD students	1,019	1,010	965

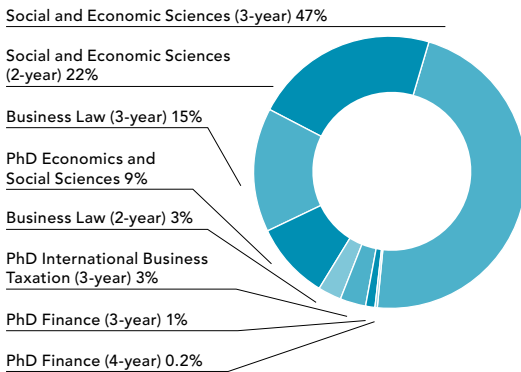
<sup>3</sup> Students may be enrolled in more than one type of program (e.g. students currently enrolled in both a bachelor and a diploma program). This is why the enrollment statistics by program differ from the total number of degree-program students.

---

**ENROLLMENT DISTRIBUTION MSC PROGRAMS**

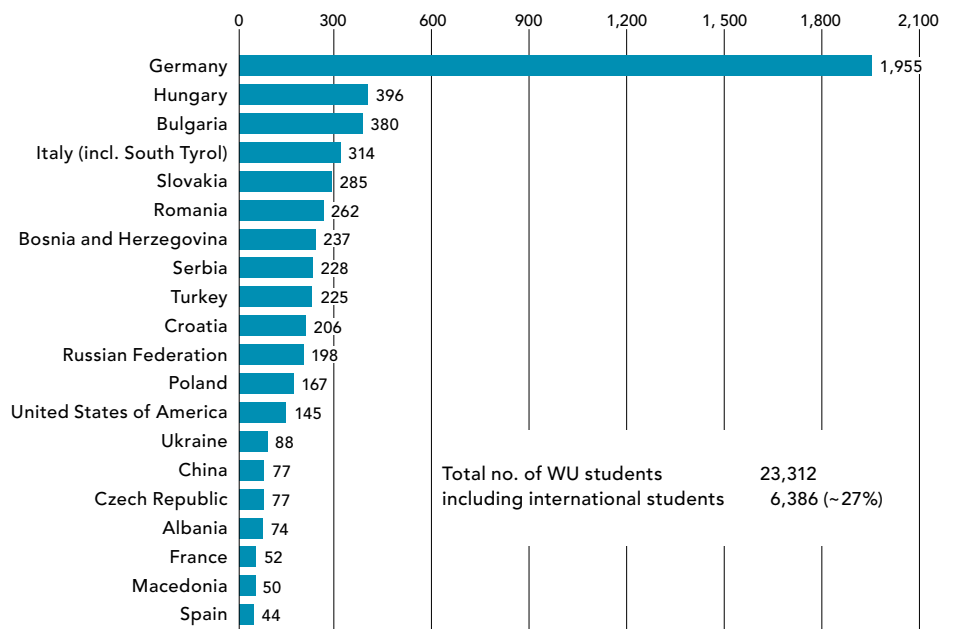


**ENROLLMENT DISTRIBUTION DOCTORAL/PHD PROGRAMS**



---

## WU'S INTERNATIONAL STUDENTS: TOP 20\*



\* as of January 2016

---

GRADUATES	Academic year 2012/13	Academic year 2013/14	Academic year 2014/15	Percent women
<b>Total graduates</b>	3,162	2,327	2,587	49%
bachelor programs	1,621	1,641	1,806	50%
master programs	533	623	712	45%
doctoral programs	75	62	69	52%

## SERVICES FOR STUDENTS AND GRADUATES



**ZBP**  
CAREER CENTER

- › 2,200 job offers in 2015, incl. 950 qualified internships or part-time student jobs
- › 500 employers per year
- › [careercalling.at](http://careercalling.at) (jobfair)



**ALUMNI**  
CLUB

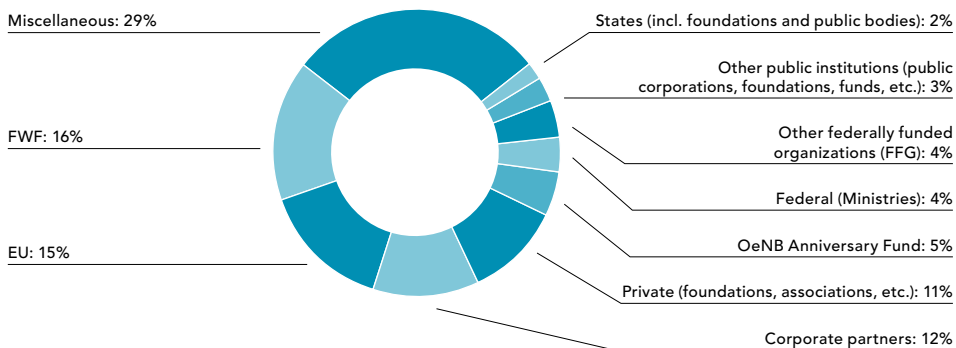
- › founded in 1995
- › 4,700 members in more than 70 countries
- › more than 70 events per year

# Research

## RESEARCH OUTPUT 2015

- › 45 books, monographs
- › 386 original contributions to collections
- › 626 original journal contributions
- › 78 working/discussion papers, preprints
- › 97 proceedings contributions
- › 886 presentations at academic conferences
- › 71 editorships (of individual volumes)

## DISTRIBUTION OF THIRD-PARTY FUNDING 2015



FWF = Austrian Service Fund, OeAW = Austrian Academy of Sciences, OeNB = Oesterreichische Nationalbank,  
FFG = Austrian Research Promotion Agency

ORGANIZATION	National	EU	Non-EU countries	Total
EU	55,573.49	1,603,155.34	–	1,658,728.83
Federal Republic of Austria	456,861.78	–	–	456,861.78
States	256,984.34	–	11,215.11	268,199.45
FWF	1,761,107.83	–	–	1,761,107.83
FFG	385,708.91	22,556.32	–	408,265.23
Corporate partners	662,782.96	296,758.70	415,746.61	1,375,288.27
OeNB Anniversary Fund	589,395.10	–	–	589,395.10
Other public institutions	261,950.74	47,209.08	18,128.55	327,288.37
Private	1,133,027.32	66,452.09	18,594.41	1,218,073.82
Miscellaneous	3,176,930.98	82,785.88	–	3,259,716.86
<b>Total</b>	<b>8,740,323.45</b>	<b>2,118,917.41</b>	<b>463,684.68</b>	<b>11,322,925.54</b>

## INTERNATIONAL JOURNALS

**Management Review Quarterly (MRQ):** Peer-reviewed research journal with focus on reviews of current developments in international management research, published by Springer

**Long Range Planning:** Peer-reviewed journal in the area of strategic management

**Region:** Peer-reviewed open access journal in regional science; published by the European Regional Science Association (ERSA)

**Review of Finance:** Peer-reviewed journal that publishes high-quality papers in all areas of financial economics, published by Oxford University Press

# Campus WU

---

Diversity, open-mindedness, responsibility, and innovation – the new Campus WU is the concrete realization of WU’s

vision for a modern university. The new architecture reflects the values and ideas WU stands for.

## KEY FACTS

- › Seven building complexes, 100,000 m<sup>2</sup> total floor space
- › Property area: 90,000 m<sup>2</sup>, 560 meters long and between 150 and 210 meters wide
- › 55,000 m<sup>2</sup> publicly accessible grounds
- › Approximately 4,000 rooms, including 90 auditoriums and seminar rooms seating well over 5,000 students
- › A total of 3,000 student workstations on campus, 1,500 in the OMV Central Library

## VIENNA

Population City of Vienna	1.8 million
Population greater metropolitan area	2.7 million

<b>Size</b>	415 km <sup>2</sup>
-------------	---------------------

Quality of Living (Mercer), 2009–2016	1st place
Liveability (The Economist), 2015	2nd place
Monocle’s Most Livable Cities Index, 2015	2nd place





1

© BOAnet.at



2

© BOAnet.at

The campus consists of six building complexes, designed by international

architects, clustered around the central Library & Learning Center.

BUILDING	KEY FACTS	UNITS
<p><b>LC: Library &amp; Learning Center</b> [1]</p>	<ul style="list-style-type: none"> <li>› Architects: Zaha Hadid Architects, Hamburg</li> <li>› Total floor space: approx. 44,000 m<sup>2</sup></li> <li>› 1,500 student workstations</li> <li>› Cantilevered roof with monitor</li> </ul>	<ul style="list-style-type: none"> <li>› Student Services</li> <li>› IT Services</li> <li>› International Office</li> <li>› WU ZBP Career Center</li> </ul> <p><b>OMV Central Library</b></p> <ul style="list-style-type: none"> <li>› Library management</li> </ul>
<p><b>EA: WU Executive Academy</b> [2]</p>	<ul style="list-style-type: none"> <li>› Architects: NO.MAD Arquitectos, Madrid</li> <li>› Total floor space: approx. 7,000 m<sup>2</sup></li> <li>› Reflective façade</li> </ul>	<ul style="list-style-type: none"> <li>› WU Executive Academy</li> <li>› WU Alumni Club</li> </ul>



BUILDING	KEY FACTS	UNITS
<p><b>D4:</b> <b>Departments</b></p>	<ul style="list-style-type: none"> <li>› Architects: Estudio Carme Pinós S. L., Barcelona</li> <li>› Total floor space: approx. 19,000 m<sup>2</sup></li> <li>› 'Tetris' façade</li> </ul>	<p><b>Departments</b></p> <ul style="list-style-type: none"> <li>› Economics</li> <li>› Finance, Accounting and Statistics (without Accounting)</li> <li>› Socioeconomics (without Managing Sustainability)</li> </ul> <p><b>Research Institutes</b></p> <ul style="list-style-type: none"> <li>› Computational Methods</li> <li>› Economics of Aging</li> <li>› Human Capital and Development</li> <li>› Regulatory Economics</li> <li>› Spatial and Real Estate Economics</li> </ul> <p><b>Competence Center</b></p> <ul style="list-style-type: none"> <li>› Empirical Research Methods</li> </ul> <p><b>Library for Social Sciences</b></p>



© Werner Weißhapppl



© Werner Weißhapppl

BUILDING	KEY FACTS	UNITS
<p><b>D3/AD:</b>  <b>Departments and Administration</b></p>	<ul style="list-style-type: none"> <li>› Architects: CRABstudio, London</li> <li>› Total floor space: approx. 25,000 m<sup>2</sup></li> <li>› Two-part complex</li> <li>› Yellow-orange-red façade faced with wooden planks</li> </ul>	<p><b>Departments</b></p> <ul style="list-style-type: none"> <li>› Business, Employment and Social Security Law</li> <li>› Finance, Accounting and Statistics (Accounting only)</li> <li>› Public Law and Tax Law</li> </ul> <p><b>Research Institutes</b></p> <ul style="list-style-type: none"> <li>› CEE Legal Studies</li> <li>› European Affairs</li> <li>› International Taxation</li> <li>› Urban Management and Governance</li> </ul> <p><b>Administration</b></p> <ul style="list-style-type: none"> <li>› Rector's Council</li> <li>› University management</li> </ul> <p><b>Library for Law</b></p>



© BOAnet.at



© BOAnet.at

BUILDING	KEY FACTS	UNITS
<p><b>TC/D1: Teaching Center and Departments</b></p>	<ul style="list-style-type: none"> <li>› Architects: BUSarchitektur ZT GmbH, Vienna</li> <li>› Total floor space: approx. 32,000 m<sup>2</sup></li> <li>› Space for approx. 5,000 people</li> <li>› Auditorium Maximum seats 650</li> </ul>	<p><b>Departments</b></p> <ul style="list-style-type: none"> <li>› Global Business and Trade</li> <li>› Socioeconomics (Managing Sustainability only)</li> </ul> <p><b>Research Institutes</b></p> <ul style="list-style-type: none"> <li>› Co-Operation and Co-Operatives</li> <li>› Family Businesses</li> <li>› Health Care Management and Economics</li> <li>› Liberal Professions</li> <li>› Supply Chain Management</li> </ul> <p><b>Competence Centers</b></p> <ul style="list-style-type: none"> <li>› Central and Eastern Europe (CEE)</li> <li>› Sustainability</li> <li>› Non-profit Organizations and Social Entrepreneurship</li> </ul>



© Werner Weißnapp



© Rainer Wicke

BUILDING	KEY FACTS	UNITS
<b>D2/SC: Departments and Student Center</b> [1]	<ul style="list-style-type: none"> <li>› Architects: Atelier Hitoshi Abe, Japan</li> <li>› Total floor space: approx. 29,000 m<sup>2</sup></li> <li>› Two building segments</li> <li>› Millefeuille building structure</li> </ul>	<p><b>Departments</b></p> <ul style="list-style-type: none"> <li>› Foreign Language Business Communication</li> <li>› Information Systems and Operations</li> <li>› Management</li> <li>› Marketing</li> </ul> <p><b>Research Institute</b></p> <ul style="list-style-type: none"> <li>› Urban Management and Governance</li> </ul> <p><b>Berndorf Library for Business Languages</b></p> <p><b>Students' Union</b></p>

BUILDING	KEY FACTS	UNITS
<b>D5: Departments</b> [2]	<ul style="list-style-type: none"> <li>› Holzer Kobler Architekturen and Freimüller Söllinger Architektur ZT GmbH</li> <li>› Three segments used for different purposes: WU, Sigmund Freud Privat Universität, student apartments</li> <li>› communicative area in the courtyard</li> </ul>	<p><b>Department</b></p> <ul style="list-style-type: none"> <li>› Strategy and Innovation</li> </ul> <p><b>Competence Center</b></p> <ul style="list-style-type: none"> <li>› Entrepreneurship Center</li> </ul> <p><b>Groups</b></p> <ul style="list-style-type: none"> <li>› Demography Group</li> </ul>

# Contact information

---

## **WU (Vienna University of Economics and Business)**

Welthandelsplatz 1  
1020 Vienna, Austria  
T +43-1-313 36-0  
wu.ac.at

### **Arriving by public transport:**

Subway: U2 stations "Messe-Prater"  
or "Krieau"

Bus: 82A, "Südportalstraße" stop

### **Regular study programs**

wu.ac.at/prospective/en/contact  
admission@wu.ac.at

### **International exchange programs**

wu.ac.at/io/en  
zas@wu.ac.at

### **Faculty contact**

international@wu.ac.at

### **WU Executive Academy**

executiveacademy.at  
executiveacademy@wu.ac.at

### **WU Alumni Club**

alumni.at  
alumni@wu.ac.at

### **WU ZBP Career Center**

zbp.at  
office@zbp.at

### **Marketing & Communications**

marketingcommunications@wu.ac.at

## **FIND OUT MORE ONLINE**

WU's Annual Report, published in English, and its German counterpart (Jahresbericht) provide detailed information on WU and recent developments in research and teaching.



**Annual Report 2015 (PDF)**  
short.wu.ac.at/3sxx



**Jahresbericht 2015 (PDF)**  
short.wu.ac.at/ga8r



WU (Vienna University of Economics and Business)  
Welthandelsplatz 1, 1020 Vienna, Austria  
wu.ac.at

Arriving by public transport:  
Subway: U2 stations "Messe-Prater" or "Krieau"  
Bus: 82A, "Südportalstraße" stop

10/2016