

Facts & Figures

WU
WIRTSCHAFTS
UNIVERSITÄT
WIEN VIENNA
UNIVERSITY OF
ECONOMICS
AND BUSINESS





Contents

| | |
|----------------------------------------|-----------|
| Key Data 2017/18 | 4 |
| International Recognition | 6 |
| Funding | 8 |
| Organization | 9 |
| Academic Units | 11 |
| WU's Departments | 10 |
| WU's Competence Centers | 10 |
| WU's Research Institutes | 11 |
| Programs | 12 |
| WU's degree programs | 12 |
| WU Executive Academy program portfolio | 13 |
| Students | 14 |
| Research | 18 |
| Campus WU | 20 |
| Key Facts | 20 |
| Vienna | 20 |
| Buildings | 21 |
| Contact information | 26 |

Key Data 2017/18



INTERNATIONAL

Partner universities _____ ~240
Courses in English _____ ~450/semester



STUDENTS

Total students (fall 2017) _____ 23,572 (47% women)
International students (fall 2017) _____ 6,408 (50% women)
Incoming exchange students _____ ~1,000 per year
Outgoing exchange students _____ ~1,000 per year



FACULTY AND STAFF¹

| | |
|----------------------------|-------------------|
| Total faculty ² | 501 (41% women) |
| Administrative staff | 499 (69% women) |
| Total | 1,135 (54% women) |



CAMPUS RESOURCES

| | |
|---------------------|------------------------|
| Premises Campus WU | 100,000 m ² |
| Premises Library | |
| Total floor space | 7,200 m ² |
| Volumes | ~ 646,510 |
| Printed journals | 729 |
| Electronic journals | 25,196 |
| Study places | 1,680 |
| Visitors | 1,051,168 |

¹⁾ 2016 in full-time equivalents

²⁾ not including personnel funded by third parties

International Recognition

FINANCIAL TIMES RANKING 2017

13th

MASTERS IN
MANAGEMENT

Masters in Management Ranking

WU's "Master in International Management" program placed 13th out of 95 ranked programs worldwide. This puts WU at 4th place in the German-speaking countries, and at 1st place in the CEE region.

1st

IN THE
CEE REGION

European Business Schools Ranking

95 universities were included in the 2017 ranking of the best European business schools, and WU came in at 44th place. This puts WU at 6th place in the German-speaking countries, and at 1st place in the CEE region.

11th

AVERAGE WORK
EXPERIENCE

Executive MBA Ranking

The WU Executive Academy's Global Executive MBA program placed 58th out of 100 ranked programs. In those categories that are particularly important for program participants, the Global Executive MBA ranks among the best 20 programs worldwide:

- › Average work experience: #11
- › International course experience: #17
- › International students: #19

HANDELSBLATT RANKING 2017

15th

RESEARCH IN
ECONOMICS

Economics Ranking

The German business daily Handelsblatt publishes an annual ranking of economics departments, business school professors and most productive research institutions in Germany, Austria, and Switzerland. WU came in at 15th place.

QS WORLD UNIVERSITY RANKINGS 2018

17th

BUSINESS MASTERS
RANKING

Business Masters Ranking

WU's "Master in International Management" program placed 17th world-wide. This puts WU at 1st place in the CEE region.

22nd

MASTERS IN
FINANCE RANKING

Masters in Finance Ranking

The QS Masters in Finance Ranking puts WU's Quantitative Finance program in 22nd place, ahead of renowned institutions like New York University (Stern) and the University of St. Gallen. For the CEE region, the program ranks in 1st place.

ACCREDITED BY



INTERNATIONAL MEMBERSHIPS

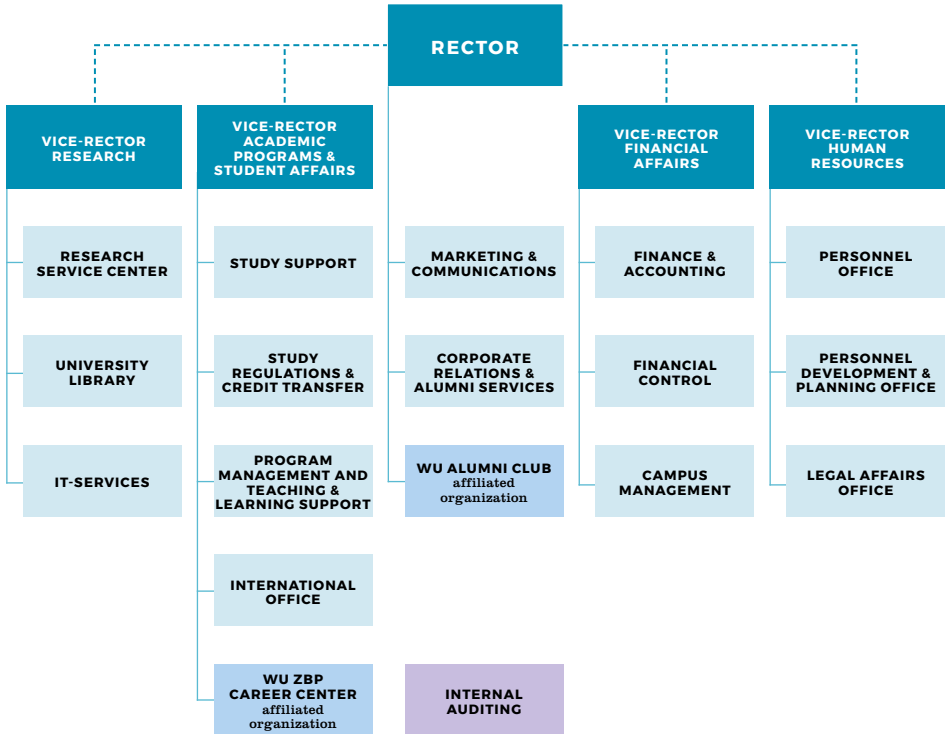


Funding

FUNDING 2017

| Revenues (in million EUR) | 2017 | 2017 in % |
|--------------------------------------------------------------|---------------|--------------|
| Federal Ministry of Science and Research | 100.1 | 65.9 |
| Tuition fees (including State Compensation for Tuition fees) | 17.6 | 11.6 |
| Research funding for projects | 7.5 | 4.9 |
| Other income and overheads | 9.0 | 5.9 |
| Executive education | 10.6 | 7.0 |
| Research grants | 7.0 | 4.6 |
| Financial income | 0.1 | 0.1 |
| Total | 151.9 | 100.0 |
| Expenses (in million EUR) | | |
| Personnel | -96.2 | 64.0 |
| Operating charges | -44.9 | 30.0 |
| Depreciation | -8.2 | 5.5 |
| Costs of goods and services | -0.6 | 0.4 |
| Taxes | -0.1 | 0.1 |
| Total | -150.0 | 100.0 |

Organization



----- The Rector's coordinative function

Academic Units

WU'S DEPARTMENTS

| | |
|-------------------------------------------------------------------|---------------------------------------------------------------------------------------------------|
| Department of Business, Employment and Social Security Law | wu.ac.at/en/businesslaw |
| Department of Economics | wu.ac.at/en/economics |
| Department of Finance, Accounting and Statistics | wu.ac.at/en/fas |
| Department of Foreign Language Business Communication | wu.ac.at/en/bizcomm |
| Department of Global Business and Trade | wu.ac.at/en/welthandel |
| Department of Information Systems and Operations | wu.ac.at/en/ipm |
| Department of Management | wu.ac.at/en/management (website in German) |
| Department of Marketing | wu.ac.at/en/marketing |
| Department of Public Law and Tax Law | wu.ac.at/en/publicandtaxlaw |
| Department of Socioeconomics | wu.ac.at/en/department-socioeconomics |
| Department of Strategy and Innovation | wu.ac.at/en/strategy-and-innovation |

WU'S COMPETENCE CENTERS

| | |
|------------------------------------------------------------------------|-----------------------------------------------------------------------------------------|
| Emerging Markets & CEE | wu.ac.at/en/emcee |
| Center for Empirical Research Methods | wu.ac.at/en/methods |
| Center for Non-profit Organizations and Social Entrepreneurship | wu.ac.at/en/npocompetence |
| Center for Sustainability | wu.ac.at/en/sustainabilitycenter |
| Competence Center for Experimental Research | wu.ac.at/en/exp |
| Entrepreneurship Center | wu.ac.at/en/about |

WU'S RESEARCH INSTITUTES

| | |
|------------------------------------------|----------------------------------------------------------------------------------------------------------------------------|
| CEE Legal Studies | wu.ac.at/fowi (website in German) |
| Computational Methods | wu.ac.at/en/firm |
| Co-Operation and Co-Operatives | wu.ac.at/ricc (website in German) |
| Cryptoeconomics | wu.ac.at/en/cryptoeconomics |
| Economics of Aging | wu.ac.at/en/altersoekonomie |
| Economics of Inequality | wu.ac.at/en/ineq |
| European Affairs | wu.ac.at/en/europainstitut |
| Family Businesses | wu.ac.at/en/research-institute-for-family-business |
| Human Capital and Development | wu.ac.at/en/humancapital |
| International Taxation | |
| Liberal Professions | wu.ac.at/fb (website in German) |
| Regulatory Economics | wu.ac.at/en/regulation |
| Research on Capital Markets | wu.ac.at/en/isk |
| Spatial and Real Estate Economics | wu.ac.at/en/immobilienwirtschaft |
| Supply Chain Management | wu.ac.at/en/scm |
| Urban Management and Governance | wu.ac.at/en/urban |

Programs

WU'S DEGREE PROGRAMS

| | | |
|------------------------------|------------------------------------------------------------------------------------------------------------------------------------------------------------------------------------------------------------------------------------------------------------------------------------------------------------------------------------------------------------------------------------------------------------------------------------------------------------------------------------------------------------------------------------------------------------------------------------------------------------------------------------------------------------------------------------------------------------------------------------------------------------------------------------------------------------------------------------------------------------------------|------------------------------------------------------------------------------------|
| BACHELOR PROGRAMS | <ul style="list-style-type: none"> › Business, Economics and Social Sciences (BSc WU) four majors: <ul style="list-style-type: none"> › Business Administration › International Business Administration › Economics and Socioeconomics › Information Systems › Business and Economics (BSc WU), English | <ul style="list-style-type: none"> › Business Law (LL.B. WU) |
| MASTER/LL.M. PROGRAMS | <ul style="list-style-type: none"> › Business Education (MSc WU) › Export and Internationalization Management (MSc WU) › Finance and Accounting (MSc WU) › Management (MSc WU) › Socioeconomics (MSc WU) › Taxation and Accounting (MSc WU) › Economics (MSc WU), English › Information Systems (MSc WU), English › International Management/CEMS (MSc WU & CEMS MIM), English › Marketing (MSc WU), English › Quantitative Finance (MSc WU), English › Socio-Ecological Economics and Policy (MSc WU), English › Strategy, Innovation, and Management Control (MSc WU), English › Supply Chain Management (MSc WU), English | <ul style="list-style-type: none"> › Business Law (LL.M. WU) |
| DOCTORAL/PHD PROGRAMS | <ul style="list-style-type: none"> › Social and Economic Sciences (Dr. rer. soc. oec.) › PhD Program in Economics and Social Sciences (PhD), German with English tracks (intended mainly for WU's academic staff) › PhD in Finance (PhD), English › PhD in International Business Taxation (PhD), English | <ul style="list-style-type: none"> › Business Law (Dr. iur.) |

WU EXECUTIVE ACADEMY PROGRAM PORTFOLIO

| | | |
|-----------------------------------------------|--------------------------------------------------------------------------------------------------------------------------------------------------------------------------------------------------------------------------------------------------------------------------------------------------------------------------------------------------------------------------------------------------------------------------------------------------------------------------------------------------------------|-------------------------------------------------------------------------------------------------------------------------------------------------------------------------------------------------------------------------------------------------------------------------------------------------------------------|
| MBA/MASTER OF LAWS PROGRAMS | <ul style="list-style-type: none"> › Global Executive MBA › Executive MBA Bucharest › Executive MBA PGM › Professional MBA with specialization areas <ul style="list-style-type: none"> › Energy Management › Entrepreneurship & Innovation › Finance › Health Care Management › Marketing & Sales › Project Management › Public Auditing › Social Management | <ul style="list-style-type: none"> › Master of Laws (International Tax Law) › Master of Business Law (Corporate Law) › Master of Legal Studies › Master of Legal Studies (European Business Law) |
| CERTIFICATE PROGRAMS | <ul style="list-style-type: none"> › Health Care Management › Logistics & Supply Chain Management › Marketing & Sales › Post Graduate Management (PGM) › Risk & Insurance Management › Social Management › Tourism & Event Management | |
| BBA DIPLOM BETRIEBSWIRTIN^{WU} | <ul style="list-style-type: none"> › Logistics & Supply Chain Management › Marketing & Sales › Risk & Insurance Management › Tourism & Event Management | |
| CUSTOM PROGRAMS AND OPEN PROGRAMS | <p>Custom Programs</p> <ul style="list-style-type: none"> › In-house MBA^{WU} › Leadership Academy^{WU} › Management Development Program^{WU} › Compact Course^{WU} › Executive/Expert Lounge^{WU} › Special Workshops^{WU} › Field Trips^{WU} | <p>Open Programs</p> <ul style="list-style-type: none"> › Business & Corporate Development Strategies › Governance Excellence – for supervisory board members › Employer Brand Manager › Global Innovation Expert › Certified Insolvency Law Expert |

Students

| STUDENT ENROLLMENT | Fall 2015 | Fall 2016 | Fall 2017 | Percent women |
|------------------------------------------------|-----------|-----------|-----------|---------------|
| Total students | 23,313 | 23,787 | 23,572 | 47% |
| degree program students | 21,831 | 22,242 | 22,117 | 48% |
| international students | 6,386 | 6,579 | 6,408 | 50% |
| New students¹ | 5,416 | 5,444 | 5,350 | 50% |
| first-time university enrollments ² | 4,079 | 4,307 | 4,136 | 50% |

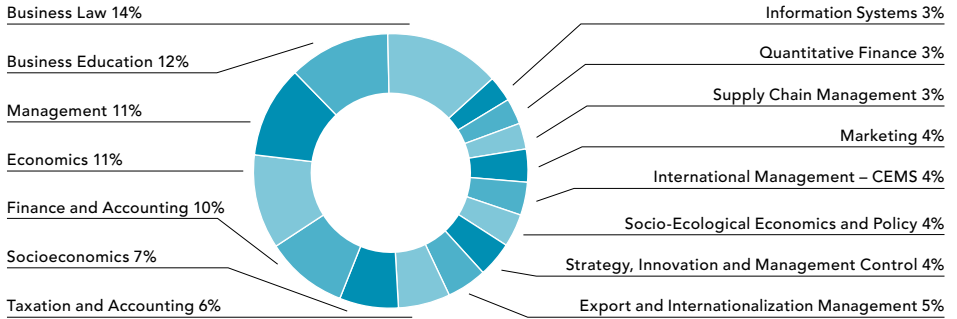
¹ "New students" refers to first-time WU students and includes both program and non-program students.

² "First-time university enrollments" refers to students enrolled in an Austrian university program for the first time, such as high school graduates, graduates of a university of applied sciences, as well as students or graduates from a foreign institution of higher education.

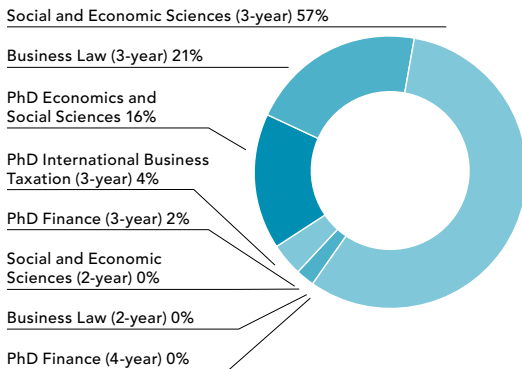
| ENROLLMENT BY PROGRAM ³ | Fall 2015 | Fall 2016 | Fall 2017 |
|------------------------------------|-----------|-----------|-----------|
| Bachelor students | 17,409 | 17,690 | 17,608 |
| MSc students | 3,342 | 3,514 | 3,594 |
| Doctoral/PhD students | 965 | 935 | 818 |

³ Students may be enrolled in more than one type of program. This is why the enrollment statistics by program differ from the total number of degree-program students.

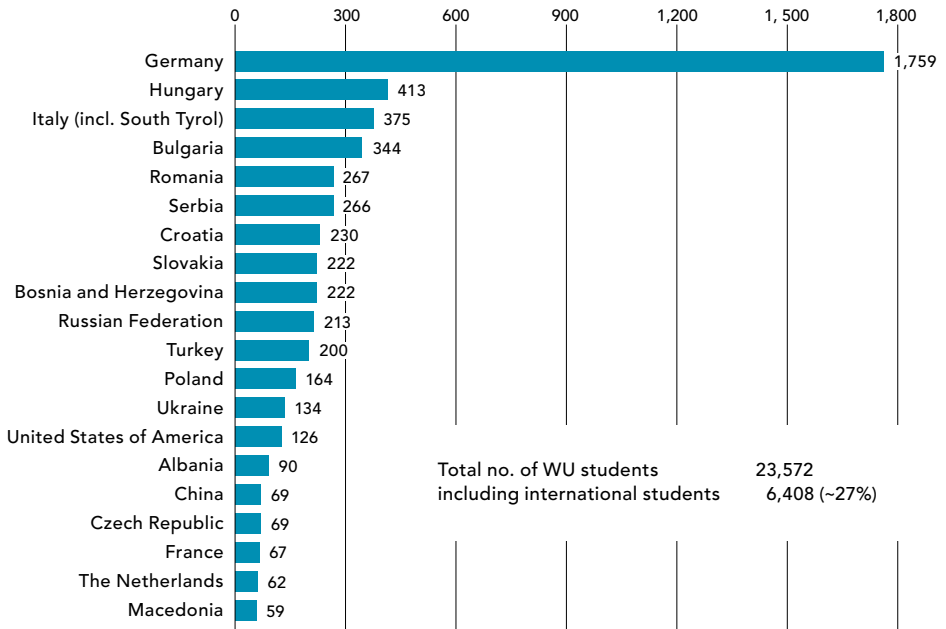
ENROLLMENT DISTRIBUTION MSC PROGRAMS



ENROLLMENT DISTRIBUTION DOCTORAL/PHD PROGRAMS



WU'S INTERNATIONAL STUDENTS: TOP 20*



* as of December 2017

| GRADUATES | Academic year 2014/15 | Academic year 2015/16 | Academic year 2016/17 | Percent women |
|------------------------|-----------------------|-----------------------|-----------------------|---------------|
| Total graduates | 2,587 | 2,907 | 2,957 | 50% |
| bachelor programs | 1,806 | 2,002 | 1,772 | 50% |
| master programs | 712 | 835 | 1,085 | 50% |
| doctoral programs | 69 | 70 | 106 | 47% |

SERVICES FOR STUDENTS AND GRADUATES



ZBP
CAREER CENTER

- › **2,746 job offers in 2017, incl. qualified internships and part-time student jobs**
- › **more than 500 employers per year**
- › **130 to 160 companies at Career Calling – Austria's biggest career fair**



ALUMNI
CLUB

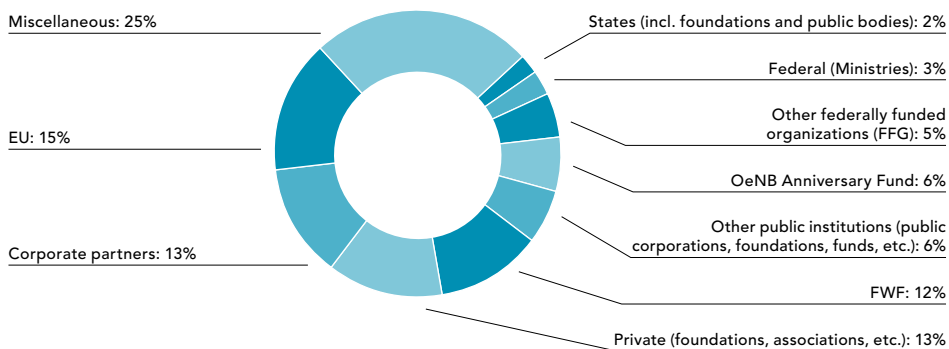
- › **founded in 1995**
- › **4,700 members in more than 70 countries**
- › **more than 70 events per year**

Research

RESEARCH OUTPUT 2017

- › 32 books, monographs
- › 553 original contributions to collections
- › 713 original journal contributions
- › 92 working/discussion papers, preprints
- › 86 proceedings contributions
- › 889 presentations at academic conferences
- › 71 editorships (of individual volumes)

DISTRIBUTION OF THIRD-PARTY FUNDING 2017



FWF = Austrian Service Fund, OeAW = Austrian Academy of Sciences, OeNB = Oesterreichische Nationalbank, FFG = Austrian Research Promotion Agency

| ORGANIZATION | National | EU | Non-EU countries | Total |
|-----------------------------|---------------------|---------------------|-------------------|----------------------|
| EU | 109,509.56 | 1,929,263.46 | – | 2,038,773.02 |
| Federal Republic of Austria | 331,393.64 | – | – | 331,393.64 |
| States | 320,392.57 | – | – | 320,392.57 |
| FWF | 1,573,133.49 | – | – | 1,573,133.49 |
| FFG | 695,148.84 | –11,770.35 | – | 683,378.49 |
| Corporate partners | 695,282.21 | 706,654.31 | 261,898.31 | 1,663,834.83 |
| OeNB Anniversary Fund | 838,861.91 | – | – | 838,861.91 |
| Other public institutions | 543,719.71 | 265,633.89 | – | 809,353.60 |
| Private | 1,562,590.42 | 130,808.43 | 23,307.40 | 1,716,706.25 |
| Miscellaneous | 2,810,199.56 | 386,180.90 | 52,776.68 | 3,249,157.14 |
| Total | 9,480,231.91 | 3,406,770.64 | 337,982.39 | 13,224,984.94 |

INTERNATIONAL JOURNALS

Management Review Quarterly (MRQ): Peer-reviewed research journal with focus on reviews of current developments in international management research, published by Springer

Long Range Planning: Peer-reviewed journal in the area of strategic management

Region: Peer-reviewed open access journal in regional science; published by the European Regional Science Association (ERSA)

Review of Finance: Peer-reviewed journal that publishes high-quality papers in all areas of financial economics, published by Oxford University Press

Campus WU

Diversity, open-mindedness, responsibility, and innovation – the new Campus WU is the concrete realization of WU's vision for a modern university. The new architecture reflects the values and ideas

WU stands for. The campus consists of six building complexes, designed by international architects, clustered around the central Library & Learning Center.

KEY FACTS

- › Seven building complexes, 100,000 m² total floor space
- › Property area: 90,000 m², 560 meters long and between 150 and 210 meters wide
- › 55,000 m² publicly accessible grounds
- › Approximately 4,000 rooms, including 90 auditoriums and seminar rooms seating well over 5,000 students
- › A total of 3,000 student workstations on campus, 1,500 in the OMV Central Library

VIENNA

| | |
|-------------------------------------------|---------------------|
| Population City of Vienna | 1.9 million |
| Population greater metropolitan area | 2.7 million |
| Size | 415 km ² |
| Quality of Living (Mercer), 2009–2018 | 1st place |
| Liveability (The Economist), 2017 | 2nd place |
| Monocle's Most Livable Cities Index, 2018 | 3rd place |



1



2

| BUILDING | KEY FACTS | UNITS |
|--------------------------------------------------------------------|------------------------------------------------------------------------------------------------------------------------------------------------------------------------------------------------------------------------------------------|------------------------------------------------------------------------------------------------------------------------------------------------------------------------------------------------------------------------------------------------------------------|
| <p>LC: Library & Learning Center [1]</p> | <ul style="list-style-type: none"> › Architects: Zaha Hadid Architects, Hamburg › Total floor space: approx. 44,000m² › 1,500 student workstations › Cantilevered roof with monitor | <ul style="list-style-type: none"> › Student Services › IT Services › International Office › WU ZBP Career Center <p>Central Library</p> <ul style="list-style-type: none"> › Library management |
| <p>EA: WU Executive Academy [2]</p> | <ul style="list-style-type: none"> › Architects: NO.MAD Arquitectos, Madrid › Total floor space: approx. 7,000m² › Reflective façade | <ul style="list-style-type: none"> › WU Executive Academy › WU Alumni Club |



| BUILDING | KEY FACTS | UNITS |
|------------------------------------------|-------------------------------------------------------------------------------------------------------------------------------------------------------------------------------------------------------|------------------------------------------------------------------------------------------------------------------------------------------------------------------------------------------------------------------------------------------------------------------------------------------------------------------------------------------------------------------------------------------------------------------------------------------------------------------------------------------------------------------------------------------------------------------------------------------------------|
| <p>D4: Departments</p> | <ul style="list-style-type: none"> › Architects: Estudio Carme Pinós S. L., Barcelona › Total floor space: approx. 19,000m² › 'Tetris' façade | <p>Departments</p> <ul style="list-style-type: none"> › Economics › Finance, Accounting and Statistics (without Accounting) › Socioeconomics <p>Research Institutes</p> <ul style="list-style-type: none"> › Computational Methods › Economics of Aging › European Affairs › Regulatory Economics › Spatial and Real Estate Economics <p>Competence Center</p> <ul style="list-style-type: none"> › Empirical Research Methods <p>Library for Social Sciences</p> |



| BUILDING | KEY FACTS | UNITS |
|-----------------------------------------------------------------|---------------------------------------------------------------------------------------------------------------------------------------------------------------------------------------------------------------------------------------|------------------------------------------------------------------------------------------------------------------------------------------------------------------------------------------------------------------------------------------------------------------------------------------------------------------------------------------------------------------------------------------------------------------------------------------------------------------------------------------------------------------------------------------------------------------------------------|
| <p>D3/AD: Departments and Administration</p> | <ul style="list-style-type: none"> › Architects: CRABstudio, London › Total floor space: approx. 25,000m² › Two-part complex › Yellow-orange-red façade faced with wooden planks | <p>Departments</p> <ul style="list-style-type: none"> › Business, Employment and Social Security Law › Finance, Accounting and Statistics (Accounting only) › Public Law and Tax Law <p>Research Institutes</p> <ul style="list-style-type: none"> › CEE Legal Studies › International Taxation › Urban Management and Governance <p>Administration</p> <ul style="list-style-type: none"> › Rector's Council › University management <p>Library for Law</p> |



| BUILDING | KEY FACTS | UNITS |
|--------------------------------------------------------------|----------------------------------------------------------------------------------------------------------------------------------------------------------------------------------------------------------------------------------------------------------------|---------------------------------------------------------------------------------------------------------------------------------------------------------------------------------------------------------------------------------------------------------------------------------------------------------------------------------------------------------------------------------------------------------------------------------------------------|
| <p>TC/D1: Teaching Center and Departments</p> | <ul style="list-style-type: none"> › Architects: BUSarchitektur ZT GmbH, Vienna › Total floor space: approx. 32,000m² › Space for approx. 5,000 people › Auditorium Maximum seats 650 | <p>Departments</p> <ul style="list-style-type: none"> › Global Business and Trade <p>Research Institutes</p> <ul style="list-style-type: none"> › Co-Operation and Co-Operatives › Family Businesses › Liberal Professions › Supply Chain Management <p>Competence Centers</p> <ul style="list-style-type: none"> › Central and Eastern Europe (CEE) |



| BUILDING | KEY FACTS | UNITS |
|-------------------------------------------------------------|-----------------------------------------------------------------------------------------------------------------------------------------------------------------------------------------------------------------------------------|-----------------------------------------------------------------------------------------------------------------------------------------------------------------------------------------------------------------------------------------------------------------------------------------------------------------------------------------------------------------------------------------------------------------------------------------------------------------------------------------------------------------------------------------------------------------------------------|
| D2/SC: Departments and Student Center [1] | <ul style="list-style-type: none"> › Architects: Atelier Hitoshi Abe, Japan › Total floor space: approx. 29,000 m² › Two building segments › Millefeuille building structure | <p>Departments</p> <ul style="list-style-type: none"> › Foreign Language Business Communication › Information Systems and Operations › Management › Marketing <p>Research Institute</p> <ul style="list-style-type: none"> › Urban Management and Governance <p>Competence Center</p> <ul style="list-style-type: none"> › Non-profit Organizations and Social Entrepreneurship › Sustainability <p>Library for Business Languages</p> <p>Students' Union</p> |

| BUILDING | KEY FACTS | UNITS |
|-----------------------------------|---------------------------------------------------------------------------------------------------------------------------------------------------------------------------------------------------------------------------------------------------------------------------------------------|-------------------------------------------------------------------------------------------------------------------------------------------------------------------------------------------------------------------------------------------------------------------------------------------------------------------------------------------------------------------------------------------------------------------------------|
| D5: Departments [2] | <ul style="list-style-type: none"> › Holzer Kobler Architekturen and Freimüller Söllinger Architektur ZT GmbH › Three segments used for different purposes: WU, Sigmund Freud Privat Universität, student apartments › communicative area in the courtyard | <p>Department</p> <ul style="list-style-type: none"> › Strategy and Innovation <p>Research Institute</p> <ul style="list-style-type: none"> › Human Capital and Development <p>Competence Center</p> <ul style="list-style-type: none"> › Entrepreneurship Center <p>Groups</p> <ul style="list-style-type: none"> › Demography Group |

Contact information

WU (Vienna University of Economics and Business)

Welthandelsplatz 1
1020 Vienna, Austria
T +43-1-313 36-0
wu.ac.at

Arriving by public transport:

Subway: U2 stations "Messe-Prater"
or "Krieau"
Bus: 82A, "Südportalstraße" stop

Regular study programs

wu.ac.at/en/programs/why-wu
bachelor.application@wu.ac.at
master.application@wu.ac.at
phd.application@wu.ac.at

International exchange programs

short.wu.ac.at/international-office
zas@wu.ac.at

WU Executive Academy

executiveacademy.at
executiveacademy@wu.ac.at

WU Alumni Club

alumni.at
alumni@wu.ac.at

WU ZBP Career Center

zbp.at
office@zbp.at

Marketing & Communications

marketingcommunications@wu.ac.at

FIND OUT MORE ONLINE

WU's Annual Report, published in English, and its German counterpart (Jahresbericht) provide detailed information on WU and recent developments in research and teaching.



Annual Report 2017
annualreport.wu.ac.at/2017/en



Jahresbericht 2017
annualreport.wu.ac.at/2017



WU (Vienna University of Economics and Business)
Welthandelsplatz 1, 1020 Vienna, Austria
wu.ac.at

Arriving by public transport:
Subway: U2 stations "Messe-Prater" or "Krieau"
Bus: 82A, "Südportalstraße" stop