

Organizational Structure Plan of WU Vienna University of Economics and Business

WU
WIRTSCHAFTS
UNIVERSITÄT
WIEN VIENNA
UNIVERSITY OF
ECONOMICS
AND BUSINESS



WU Organizational Structure Plan

Pursuant to § 21 (1) item 1 of the Universities Act 2002 (*Universitätsgesetz*), the following Organizational Structure Plan was approved by the University Board on May 18, 2020 after presentation by the Rector's Council and approval by the Senate. It shall become effective as of July 1, 2020, replacing the version of the Organizational Structure Plan published in the WU Bulletin dated June 5, 2019, issue 36, which ceases to be effective on June 30, 2020:

Preamble:

1. This Organizational Structure Plan describes the internal organization of WU Vienna University of Economics and Business. The Plan differentiates between academic units (teaching and/or research facilities) and administrative/service units.
2. The university's academic units consist of departments, research institutes, competence centers, and the WU Executive Academy. Within departments, the establishment of institutes and groups is permissible pursuant to §§ 17 (1) and 20 (1) of the WU By-Laws.
3. With the exception of the bodies named in item 4 below, each administrative/service unit is allocated to a specific member of the Rector's Council. Pursuant to § 11 of the Rules of Procedure of the Rector's Council, the vice-rectors act as supervisors to the employees of these units on behalf of the rector.
4. The office of the Senate and the office of the Equal Opportunities Committee are service units that are allocated to the Senate and the Equal Opportunities Committee, respectively, and not to the Rector's Council. The chair of the Senate acts as supervisor to the employees of the office of the Senate on behalf of the rector. The chair of the Equal Opportunities Committee acts as supervisor to the employees of the office of the Equal Opportunities Committee on behalf of the rector.
5. The internal organization of the university is described and depicted in Annexes 1 and 2.

Chair of the University Board:

Cattina Leitner

Annex 1

Organization of academic units

Departments

Economics
Finance, Accounting and Statistics ²⁾
Foreign Language Business Communication
Global Business and Trade ²⁾
Information Systems and Operations ²⁾
Management ^{1) 2)}
Marketing ²⁾
Private Law
Public Law and Tax Law
Socioeconomics
Strategy and Innovation

Research Institutes

Capital Markets
CEE Legal Studies
Computational Methods
Co-Operation and Co-Operatives
Cryptoeconomics
Economics of Aging
Economics of Inequality
European Affairs (Europainstitut)
Family Business
International Taxation
Liberal Professions
Regulatory Economics
Spatial and Real Estate Economics
Supply Chain Management
Urban Management and Governance

Competence Centers

Business Languages
Emerging Markets and CEE
Empirical Research Methods
Experimental Research
**Nonprofit Organizations and Social
Entrepreneurship**
Sustainability Transformation and Responsibility
WU Entrepreneurship Center

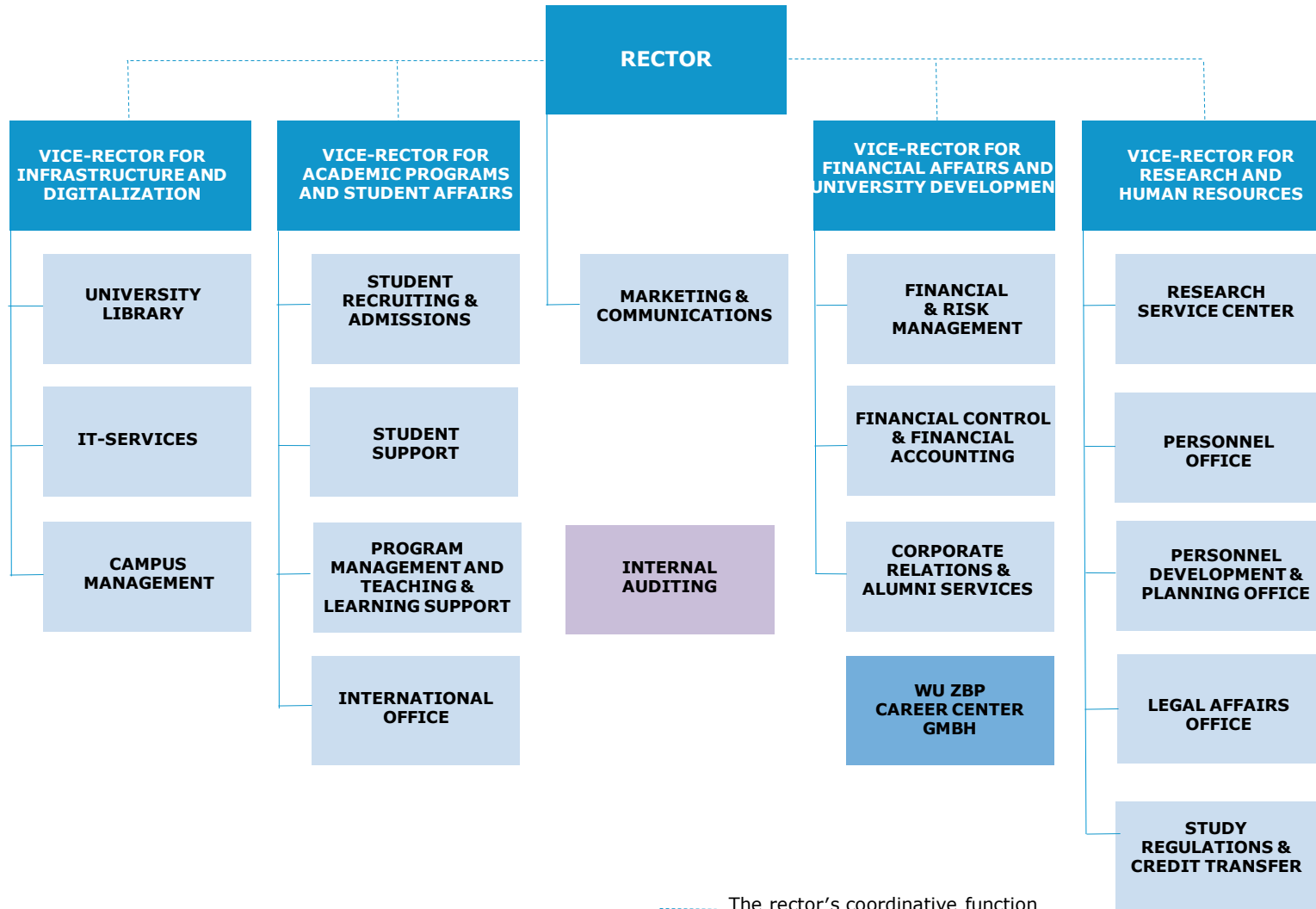
WU Executive Academy

¹⁾ The Department of Management has been commissioned with the implementation of the interdisciplinary gender research and teaching activities required under § 49 of the University's Plan for the Advancement of Women (Frauenförderungsplan).

²⁾ The business administration-related Departments of Finance, Accounting and Statistics, Information Systems and Operations, Management, Marketing, Strategy and Innovation, and Global Business and Trade together form the Convention of Business Administration-Related Departments (*Konvent der betriebswirtschaftlichen Departments*).

Annex 2

Service/administrative units, allocation to individual Rector's Council members



----- The rector's coordinative function