

# BBE Road Map



WIRTSCHAFTS  
UNIVERSITÄT  
WIEN VIENNA  
UNIVERSITY OF  
ECONOMICS  
AND BUSINESS

Your  
Bachelor  
Business & Economics  
Road Map



# Welcome to the BBE Community/cohort 5!



42%  
Austrians

40%  
other EU/EEA

18%  
non-EU/EEA

30  
nationalities

# In this presentation, you will find information on...



**BBE & WU**

**WU's  
online tools**



**Student  
life at WU**

# WU's Bachelor's Programs



- No LVPs in BBE, only course types with specific attendance requirements and various performance components
- No examination weeks in BBE, course registration = exam registration
- Courses only once a year, either winter or summer semester (retaking courses is only possible once within 12 months)
- No winter university and summer university for BBE students
- Difference in specializations' offer

# WU's academic calendar

Winter semesters	October - January
Semester break	February
Summer semesters	March - June
Summer break	July - September

## **Access to WU's academic calendar:**

<https://www.wu.ac.at/en/the-university/organizational-structure/university-management/senate/academic-year>

# Dates and Deadlines

## ACADEMIC YEAR 2022/2023

### WINTER SEMESTER 2022/23

<b>Admission (general enrollment period)*</b>	July 11, 2022 – September 5, 2022
<b>Re-registration period</b> (payment of ÖH dues and tuition fees)	July 11, 2022 – October 31, 2022. Please check the regulations <a href="#">here</a> .
<b>Course registration for first half of semester</b>	September 30, 2022 – October 2, 2022
<b>Course registration for second half of semester</b>	November 25, 2022 – November 27, 2022
<b>Courses in session</b>	October 1, 2022 – January 28, 2023
Christmas break	December 24, 2022 – January 8, 2023
Semester break	January 30, 2023 – February 26, 2023



You have to register for every course you would like to take in a semester. You will not be registered automatically.

### SUMMER SEMESTER 2023

<b>Re-registration period</b> (payment of ÖH dues and tuition fees)	January 9, 2023 – March 31, 2023. Please check the regulations <a href="#">here</a> .
<b>Course registration</b>	To be announced in the <a href="#">course catalogue</a>
<b>Courses in session</b>	March 1, 2023 – July 1, 2023
Easter break	April 1, 2023 – April 10, 2023
Start summer break	July 3, 2023



Do not forget to re-register and to pay the ÖH dues (tuition fees) every semester during the enrollment periods!

\*Please note that you have to re-register every semester to keep your student status.

# Structure of semesters

## BBE is a 3 years bachelor's degree program

Year 1		Year 2		Year 3	
Semester 1	Semester 2	Semester 3	Semester 4	Semester 5	Semester 6
Phase 1	Phase 2		Phase 3		
Intro Courses	Core Courses Optional from semester 1: Free electives Optional from semester 3: specializations (prerequisite: 54 ECTS credits)		Specializations, Free Electives, Bachelor's Thesis Optional: Exchange Semester		

We strongly recommend to comply with the suggested structure of core courses because courses build up on each other and will be offered in the outlined semesters only (i.e. once a year). In addition, places are strictly limited and being a year 1 student, you might be de-registered if you register for a year 2 course.



# First semester timetable October 1 – January 28

## 1<sup>ST</sup> SEMESTER: OCTOBER 1, 2022 – JANUARY 28, 2023

### FIRST HALF: OCTOBER – NOVEMBER

Tue	› <b>Business and Society</b> › <b>Contemporary Challenges in Business and Economics</b>
Wed	› <b>Quantitative Methods 1</b> (registration for one course only) <b>Lecture:</b> in the morning Followed by 1-hour exercise sessions in small groups in the afternoon
Thu	› <b>Business and Society</b>

### SECOND HALF: NOVEMBER – JANUARY

Mon	› <b>Governance and Legal Environment</b>
Tue	› <b>Understanding Business/Business Planning</b> (registration for one course only)
Wed	› <b>Quantitative Methods 1</b> (registration for one course only) <b>Lecture:</b> in the morning Followed by 1-hour exercise sessions in small groups in the afternoon
Thu	› <b>Understanding Business/Business Planning</b> (registration for one course only)
Fri	› <b>Governance and Legal Environment</b>

Course registration starts on  
September 30 at 2 p.m.  
Everyone will get a spot but you  
have to register yourself!

Course registration starts on  
November 25 at 2 p.m.  
Everyone will get a spot but you  
have to register yourself!



Please check [eVVZ](#) for the exact  
dates and times of your courses!

# Your BBE study plan

Year 1		Year 2		Year 3			
Semester 1	Semester 2	Semester 3	Semester 4	Semester 5	Semester 6		
<ul style="list-style-type: none"><li>Contemporary Challenges in Business and Economics</li><li>Business and Society<sup>1</sup></li></ul>	Financial Reporting and Analysis	Business Analytics I <sup>3</sup>	Managing Organizations and People	Bachelor's Thesis			
	Quantitative Methods II <sup>3</sup>	Business Analytics II <sup>3</sup>	Logic and Methodology of Social Sciences				
	Law, Economics, and Business	Decision Making and Behavior in Business	Introduction to Academic Writing				
	Foundations in Microeconomics	Foundations in Macroeconomics					
Quantitative Methods I <sup>2</sup>	Foundations in Socioeconomics	History of Economics and the Economy					
Governance and Legal Environment							
Understanding Business/Business Planning							
		Specializations <sup>6</sup>					
Free Electives <sup>5</sup>							
			Exchange Semester or ISP <sup>4</sup> (Optional)				
Internship + Seminar (Optional)		Internship + Seminar (Optional)					

This chart only serves as an illustration.

- \* We strongly recommend to comply with the suggested structure of core courses because courses build up on each other and places are strictly limited. If you register for a year 2 course but you are a year 1 student, you may be de-registered.
  - \*Courses will be offered in the outlined semesters only. Many courses will only be offered once a year.
  - \*Please find detailed information on the program, e.g. structure, organization, administration, on our [BBE website](#)
- <sup>1</sup> Introductory Phase: students have to successfully pass these courses as a prerequisite for any core course
  - <sup>2</sup> Quantitative Methods is not sequenced by the courses of the Introductory Phase
  - <sup>3</sup> Business Analytics I + II are sequenced by Quantitative Methods II
  - <sup>4</sup> ISP = International Short Program, you can either complete an exchange semester or an ISP
  - <sup>5</sup> It is possible to register for courses as [Free Electives](#) from semester 1. But as you will have to do enough with 5 core courses per semester we recommend taking them starting from the 4<sup>th</sup> semester (where you will only have to take 2 core courses). If you are planning to go on an exchange semester, we strongly recommend to take your Free Electives at one of our partner universities.
  - <sup>6</sup> You need to have successfully completed a minimum of 54 ECTS credits (42 ECTS credits of core courses + 12 ECTS credits of introductory courses) to [apply for Specializations](#).

# Specializations



- What is a specialization?
- More than 25 [specializations](#)
- Prerequisite: 54 ECTS (12 ECTS introductory courses + 42 ECTS core courses)
- Complete specializations totaling 40 ECTS
  - Combine specializations
  - 20 ECTS specializations
  - 10 ECTS specializations
- You have to apply for the specializations before the start of the semester:  
<https://www.wu.ac.at/en/students/my-program/bachelors-programs/business-and-economics/structure-content/specializations>

# Free Electives

## INTERESTS



Theater



Archery



Solar Energy



Artificial Intelligence



Caligraphy



Travelling



Video Games



Mindfulness

- Complete **free electives** totaling 26 ECTS
  - At WU or another university
  - In any language
  - Recommendation 1\*: start ~ semester 4 OR take them while on exchange semester
  - Recommendation 2: ask for recognition of free electives only at the end of your second semester
  - No general prerequisites (no specific amount of ECTS but always check syllabi for any course requirements)
  - Check ECTS after completing – send an e-mail to [bbe@wu.ac.at](mailto:bbe@wu.ac.at) if they are not displayed correctly
  - More information on the [BBE website](#)

\*it is possible to register for courses as free electives from semester 1

# Internship (optional)



- In a company and country of your choice
- Has to be related to your studies
- Minimum 6 weeks full-time
- Max. 8 ECTS for internship + 4 ECTS internship seminar
- Earn up to 12 ECTS
- The Internship + Internship Seminar reduce the amount of free electives
- Mandatory approval form in the semester BEFORE internship
- Mandatory Internship seminar in the semester AFTER internship
- Apply early enough!
- Visit our [Career Service Center \(ZBP\)](#)
- Grants possible for internships abroad ([International Office](#))

Find all information on the internship [here](#) in the Bachelor's Guide.

# Study internationally

## Exchange semester

- Prerequisite: **38 ECTS credits** (excluding free electives)
- To go on exchange, **apply one year in advance**
- Take your **free electives and/or a specialization** abroad
- **Cross-Cultural Competence course** in the semester BEFORE your exchange semester
- Check the possibility for grants: **Erasmus+, WU mobility grants, and more.**
- During your exchange: Make sure to pay ÖH dues at WU online

## International Short Program (ISP)

- Prerequisite: **38 ECTS credits** (excluding free electives)
- Program duration usually between **3-5 weeks** in summer
- **Explore new academic environments and topics**
- Programs are offered **abroad, at WU, and online**
- Earn ECTS credits through a short program



# Study internationally

## Double degree program

- Partner university:  
[Queensland University of Technology](#) (School of Business and Economics)  
in Brisbane, Australia
- Various majors:  
[Economics, Finance, International Business, Management, or Marketing](#)
- [5 spots available](#) for BBE students
- Abroad in 6<sup>th</sup> and 7<sup>th</sup> semester
- Two degrees: BSc (WU), B.Bus

## Visit our International Office

- Come by the office in the LC building, 4th floor
- Make use of [small group advisory meetings & workshops](#)
- Visit [Go Global](#), your event to internationalize your studies
- Check the website: [wu.ac.at/io/en](http://wu.ac.at/io/en)





# Global mindset: Worldwide exchange opportunities



# Studying at university is different from being at school

- Grades: grading is different from country to country
  - In Austria, it cannot be taken for granted to receive a “very good (1)”. Therefore, you do not need to be disappointed if you “only” receive a “good (2)” or “satisfactory (3)”. A “good” means that you performed well. If you want to improve your grade, you can retake the course up to twelve months after taking it
- ECTS: lots of self-study
  - 1 ECTS = approx. 25 working hours, keep in mind that all your courses are worth 6 ECTS
- More freedom and flexibility but more responsibility, initiative, and commitment needed in order to achieve good results
- Academic integrity
  - Be aware of free riding and plagiarism. Free riding is considered as plagiarism

# You could not enroll yet?

- Officially enroll as a WU student [by September 5, 2022](#).
- If you cannot enroll by that date, please get in touch with our admissions office as soon as possible!
- Inform your lecturers before the first classes take place, if you are not registered for the courses, your lecturers cannot grade you.
- Only after your official enrolment, you can contact us to register for the courses. Please send an e-mail to [bbe@wu.ac.at.at](mailto:bbe@wu.ac.at.at) including
  - The courses you want to participate in (course number!)
  - Your student ID number
  - Your full name
  - Inform the lecturers about your course registration
  - You will soon be on the BBE mailing list with your WU e-mail

# In this presentation, you will find information on...



BBE & WU

WU's  
online tools



Student life  
at WU

# Useful online tools (1)



**VVZ:** WU's course catalog with detailed information on courses, such as syllabi, dates, times, registration deadlines, list of (access to) specializations, additional courses (free electives)

**LPIS:** Registration for courses and exams.  
Make sure that you chose the correct bachelor's program.  
**No waiting list for introductory and core courses (unless it's stated in the syllabus).**  
Course exchange service possible but automatically and computer based.

**Learn:** WU's e-learning platform

# Useful online tools (2)



**BBE website:** Detailed information about BBE

**Bachelor's Student Guide for English-taught programs:** General useful administrative and organizational information during your studies

**Quicklinks** (upper right corner on wu.ac.at): Get quick access to the above mentioned tools and further services, such as downloading your transcript, checking your GPA, student ranking, report completion of studies, etc.

# In this presentation, you will find information on...



**BBE & WU**

**WU 's  
online tools**

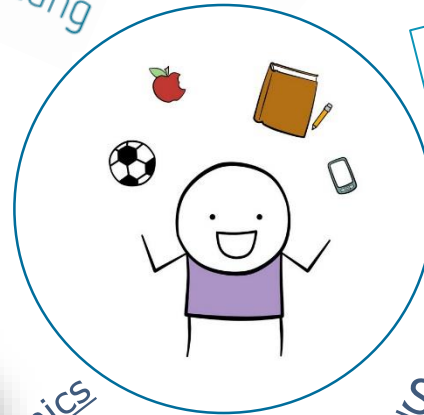


**Student life  
at WU**

# Student Life at WU



UNIVERSITÄTS-  
SPORTINSTITUT  
WIEN



Regular BBE events with peers and faculty: BBE  
Welcome Days, BBE Christmas Get-together,  
BBE Summer Picnic

Regular BBE information sessions  
with BBE Program Manager



Learning Ergonomics



Student Engagement  
and Counselling



- Make sure to put your waste in the right bin
- Act sustainably and responsibly, no matter where you are



- Save energy



- Be conscious about what you buy
- Bring your reusable coffee-to-go cups, snack boxes, and cutlery



# We wish you an inspiring first semester at WU!

