

# Wireless LAN at WU Vienna

Instructions for



© 2012, IT-Services, Information Center

WU Vienna, Augasse 2-6, 1090 Wien

All rights reserved.

# Wireless LAN at WU Vienna

## with Windows XP

To access the wireless network at the WU Vienna, you will need a laptop with an operating system with network software configured for DHCP and a wireless network adapter capable of 802.1x authentication.

It is extremely important that you have the latest drivers installed for your network card. Within our wireless network, you can connect using IEEE 802.11a, b, g, and n-standards.

### Network password

First of all, please make sure that you have already established a network password at the *control panel* (» <https://controlpanel.wu.ac.at/>).

» *Control Panel* » *Services* » *Netzwerkzugang*

The screenshot shows the 'Controlpanel' interface for 'WU NETZWERKZUGANG'. On the left is a navigation menu with 'Quick Links' and categories like 'Übersicht', 'Account', 'E-Mail', 'Services', 'Externe Links', and 'Verwaltung'. The 'Services' section is expanded to show 'Info Channels', 'Handy Registrierung', 'ADSL', 'Netzwerkzugang', and 'Software'. The main content area displays the title 'WU NETZWERKZUGANG' and a message: 'Sie haben sich noch für keinen Netzwerkdienst angemeldet.' Below this, it lists available services: 'Verschlüsseltes WLAN (Konfiguration WLAN)' and 'Modemzugang (Konfiguration Modem)'. A section titled 'Bitte geben Sie ein Passwort ein, um sich für den Netzwerkdienst anzumelden:' contains two password input fields labeled 'Passwort:' and 'Wiederholung Passwort:', and a 'Neues Passwort setzen' button. The footer indicates '© 2007 Wirtschaftsuniversität Wien | Kontakt'.

Choose a strong password with at least 6 characters. You will then be part of the user group "Verschlüsseltes WLAN" ("encrypted wireless network").

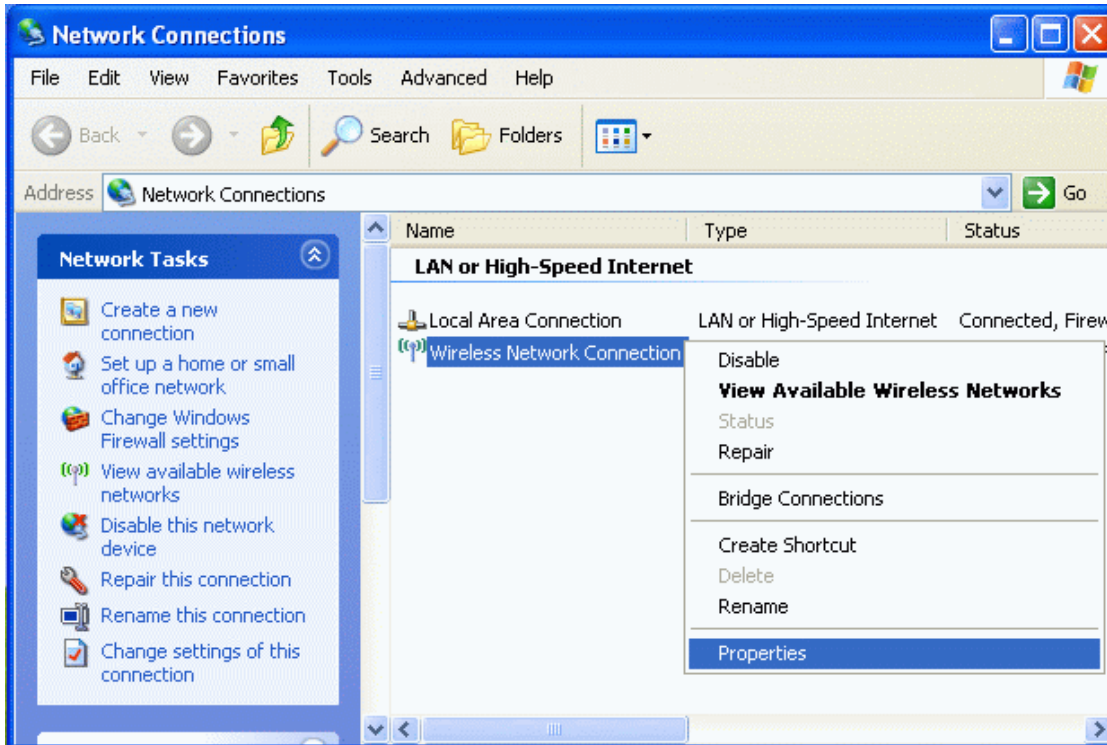
### Locations of Wireless Access-Points at WU-Campus

We provide wireless network service all over campus, an overview is available at

» [http://www.wu.ac.at/it/anleitungen/wlan/wlan\\_standorte/](http://www.wu.ac.at/it/anleitungen/wlan/wlan_standorte/)

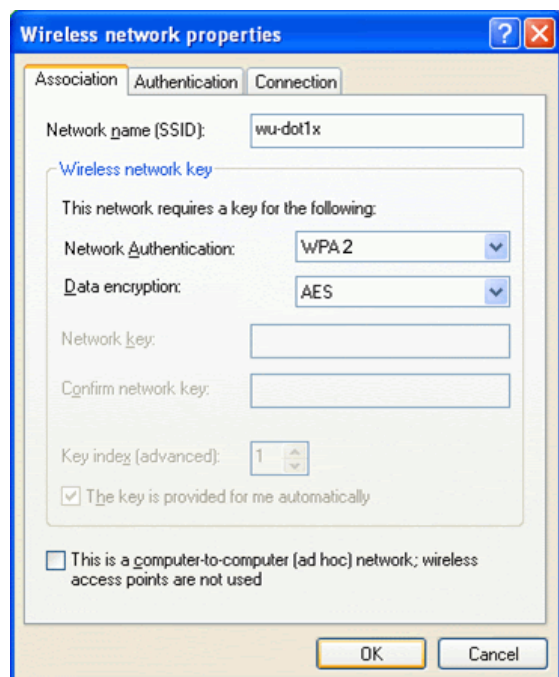
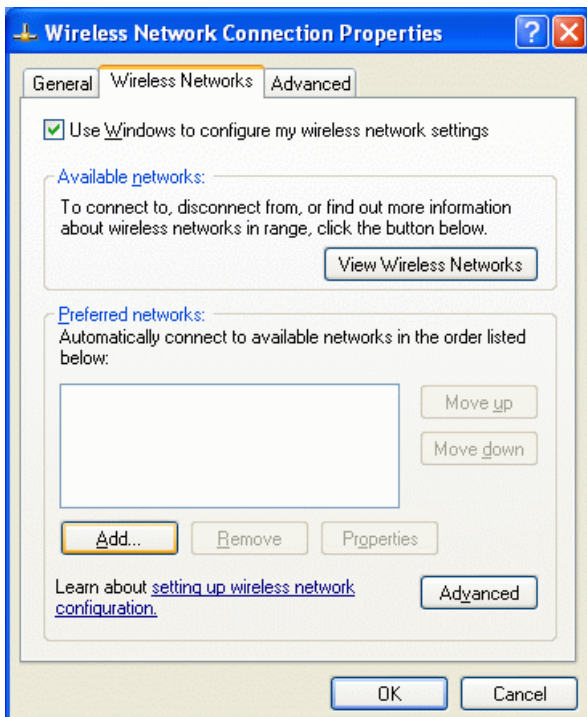
## Setting up your wireless network connection

- » Start » Control Panel » Network and Internet Connections
- » (right click) Wireless Network Connections » Properties

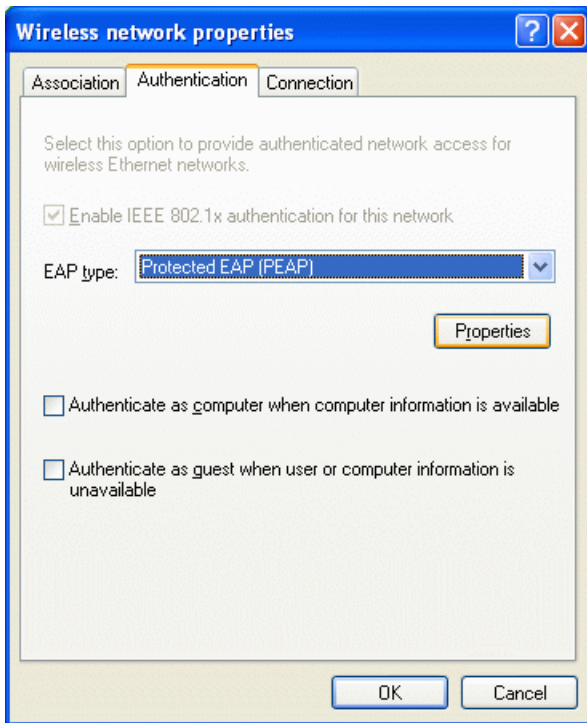


- » Use Windows to configure ...
- » Wireless Networks » Add...

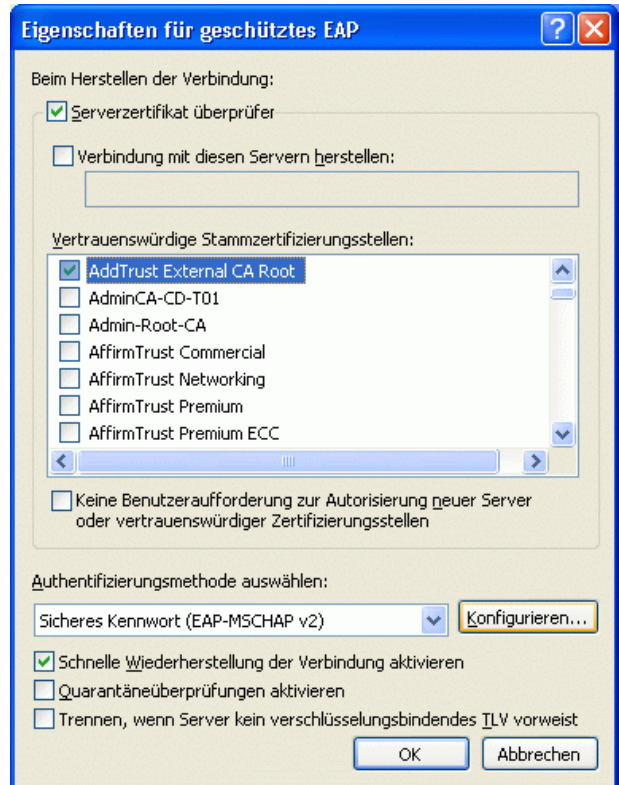
- » Network name (SSID): wu-dot1x
- » Network Authentication: WPA2
- » Data encryption: AES



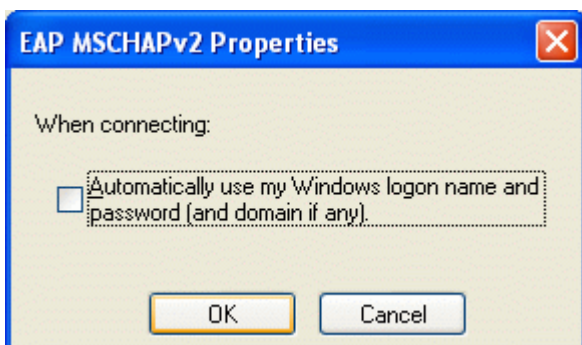
» Authentication » EAP-type: Protected EAP (PEAP) » DO NOT activate "Authenticate as computer..."



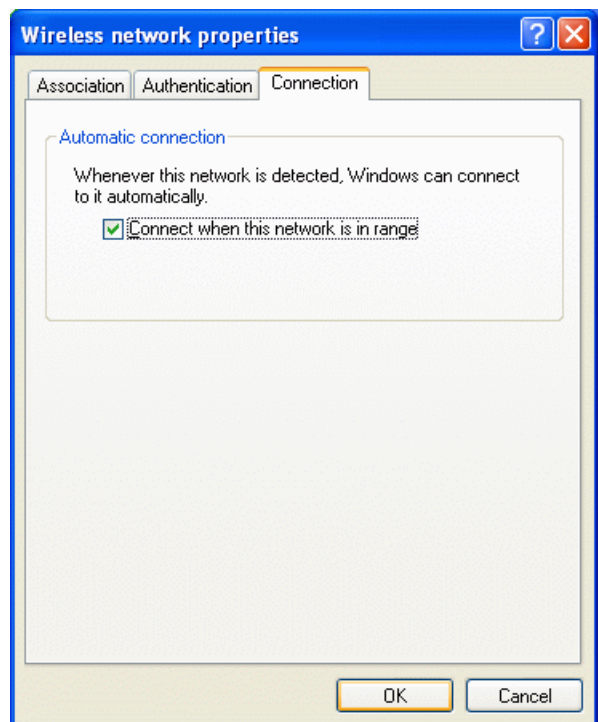
» Properties » Validate server certificate » AddTrust External CA Root



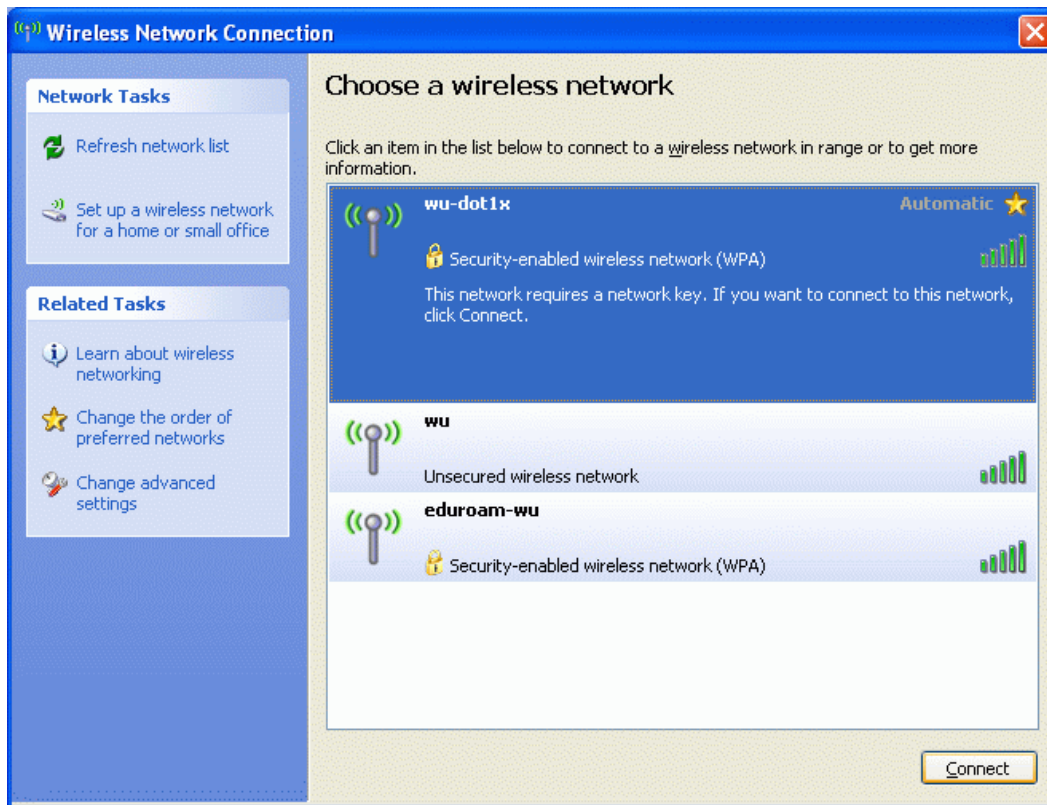
» Authentication Method: Secured password (EAP-MSCHAP v2) » Configure » DO NOT activate "Automatically use my Windows logon name and..."



» Automatically connect, if used as standard wireless network connection.



» *Open connection with "wu-dot1x"*



» Click inside of the bubble on the bottom right of your screen and enter your user credentials.

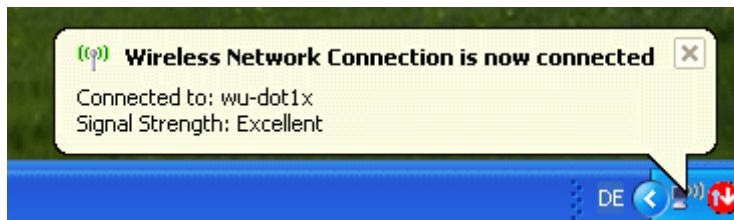


» Username: your account at WU Vienna

» Password: your network password as established in the Control Panel.



» Successful authentication – your wireless connection is now active!



## Delete password and user data

**Note:** Your password is automatically being stored in the Registry of Windows XP. You have to delete the entry manually, if someone else wants to connect with his credentials.

Open the start menu and click "run". In the text box, type "cmd". This will open the command prompt, now copy the following line into the command prompt and press enter, answer the question with „Y“:

```
reg delete HKEY_CURRENT_USER\Software\Microsoft\EapOl\UserEapInfo
```

At your next connection you will be asked for username and password again.