

Wireless LAN

„wu-dot1x“

Instructions for



Windows Vista™

© 2012, IT-Services, Information Center

WU Vienna, Augasse 2-6, 1090 Wien

Alle Rechte vorbehalten.

”wu-dot1x” with Windows Vista SP2

To access the wireless network at the WU Vienna, you will need a laptop with an operating system with network software configured for DHCP and a wireless network adapter capable of 802.1x authentication.

It is extremely important that you have the latest drivers installed for your network card. Within our wireless network, you can connect using IEEE 802.11a, b, g and n-standards.

Network password

First of all, please make sure that you have already established a network password at the **Control Panel** (» <https://controlpanel.wu.ac.at/>).

» *Control Panel* » *Services* » *Netzwerkzugang*

The screenshot shows the 'WU NETZWERKZUGANG' (WU Network Access) page. On the left is a navigation menu with 'Quick Links' and categories like 'Übersicht', 'Account', 'E-Mail', 'Services', 'Externe Links', and 'Verwaltung'. The 'Services' section is expanded to show 'Netzwerkzugang'. The main content area is titled 'WU NETZWERKZUGANG' and contains the message: 'Sie haben sich noch für keinen Netzwerkdienst angemeldet.' (You have not yet logged in for any network service). Below this, it lists available services: 'Verschlüsseltes WLAN (Konfiguration WLAN)' and 'Modemzugang (Konfiguration Modem)'. At the bottom, there is a section titled 'Bitte geben Sie ein Passwort ein, um sich für den Netzwerkdienst anzumelden:' (Please enter a password to log in for the network service:). This section contains two input fields: 'Passwort:' and 'Wiederholung Passwort:', followed by a 'Neues Passwort setzen' button. The footer of the page reads '© 2007 Wirtschaftsuniversität Wien | Kontakt'.


Choose a strong password with at least 6 characters. You will then be part of the user group "Verschlüsseltes WLAN" ("encrypted wireless network").

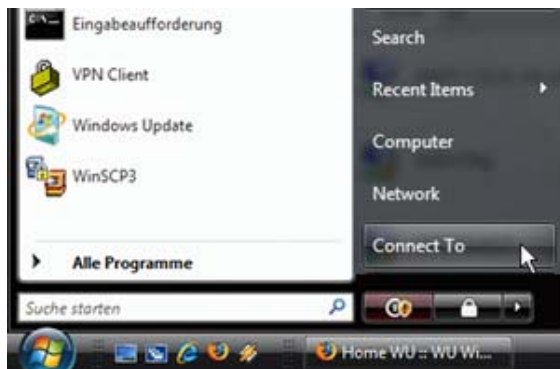
Locations of Wireless Access-Points at WU-Campus

We provide wireless network service all over campus, an overview is available at

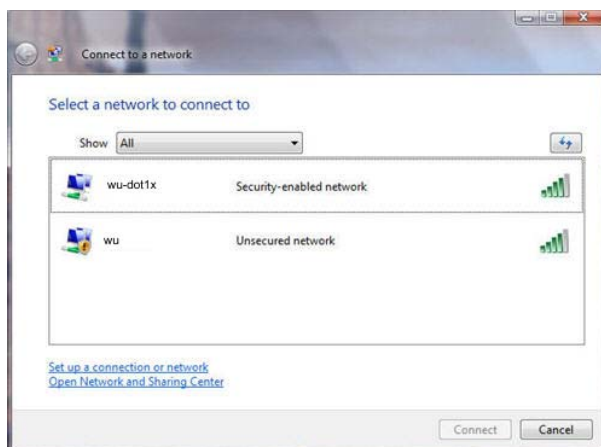
» http://www.wu.ac.at/it/anleitungen/wlan/wlan_standorte

Setting up your wireless network connection

» Start  » Connect to



» Click the wireless network "wu-dot1x", then click » Connect



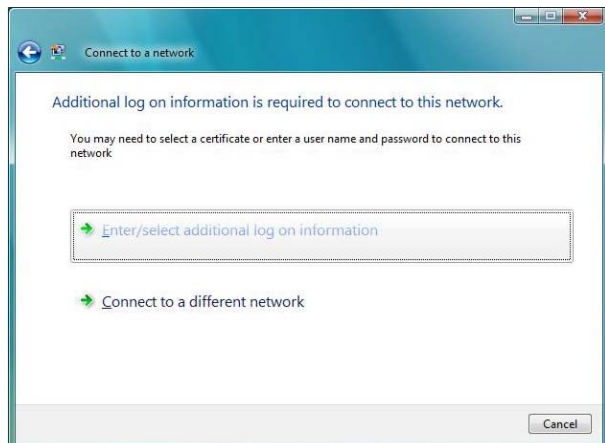
» Additional information is required to connect to this network



- » Username: your account at WU Vienna
- » Password: your network password as established in the Control Panel

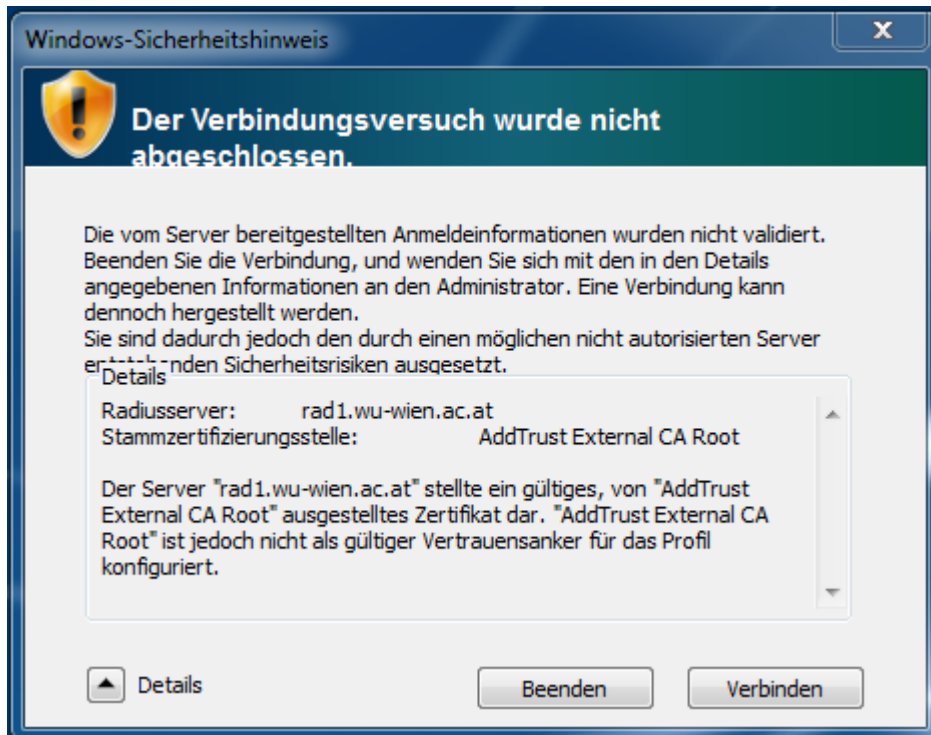


- » *Additional information is required to connect to this network (Certificate is still missing!)*



» Correct certificate is „AddTrust External CA Root“

» Check certificate » OK



» Successful authentication – wireless connection is now active!

